

Parent Aware Rated child care programs across Minnesota

March 2017

651-431-3809

Attention. If you need free help interpreting this document, call the above number.

የስተውሉ፡ ካለዎንም ክፍያ ይህንን ዶክመንት የሚተረጎምሎ አስተርጓሚ ከፈለጉ ከላይ ወደተጻፈው የስልክ ቁጥር ይደውሉ።

ملاحظة: إذا أردت مساعدة مجانية لترجمة هذه الوثيقة، اتصل على الرقم أعلاه.

သတိ။ ဤစာရွက်စာတမ်းအားအခမဲ့ဘာသာပြန်ပေးခြင်း အကူအညီလိုအပ်ပါက၊ အထက်ပါဖုန်းနံပါတ်ကိုခေါ်ဆိုပါ။

កំណត់សំគាល់ ។ បើអ្នកត្រូវការជំនួយក្នុងការបកប្រែឯកសារនេះដោយឥតគិតថ្លៃ សូមហៅទូរស័ព្ទតាមលេខខាងលើ ។

請注意，如果您需要免費協助傳譯這份文件，請撥打上面的電話號碼。

Attention. Si vous avez besoin d'une aide gratuite pour interpréter le présent document, veuillez appeler au numéro ci-dessus.

Thov ua twb zoo nyeem. Yog hais tias koj xav tau kev pab txhais lus rau tsab ntaub ntawv no pub dawb, ces hu rau tus najnpawb xov tooj saum toj no.

ဟ်သုဉ်ဟ်သးဘဉ်တက့ၢ်. ဖဲနမ့ၢ်လိာ်ဘဉ်တၢ်မၤစၢၤကလိလၢတၢ်ကကျိးထံဝဲဒၣ်လိာ် တိလိာ်မိတခါအံၤန့ၣ်,ကိးဘဉ်လိာ်တဲမိနီၣ်ဂံၢ်လၢထးအံၤန့ၣ်တက့ၢ်.

알려드립니다. 이 문서에 대한 이해를 돕기 위해 무료로 제공되는 도움을 받으시려면 위의 전화번호로 연락하십시오.

ໂປຣດຊາບ. ຖ້າຫາກ ທ່ານຕ້ອງການການຊ່ວຍເຫຼືອໃນການແປເອກະສານນີ້ຟຣີ, ຈົ່ງໂທໂປທີ່ໝາຍເລກຂ້າງເທິງນີ້.

Hubachiisa. Dokumentiin kun bilisa akka siif hiikamu gargaarsa hoo feete, lakkoobsa gubbatti kenname bibili.

Внимание: если вам нужна бесплатная помощь в устном переводе данного документа, позвоните по указанному выше телефону.

Digniin. Haddii aad u baahantahay caawimaad lacag-la'aan ah ee tarjumaadda qoraalkan, lambarka kore wac.

Atención. Si desea recibir asistencia gratuita para interpretar este documento, llame al número indicado arriba.

Chú ý. Nếu quý vị cần được giúp đỡ dịch tài liệu này miễn phí, xin gọi số bên trên.

LB2 (8-16)



For accessible formats of this publication or additional equal access to human services, write to dhs.child.care@state.mn.us, call 651-431-3809, or use your preferred relay service. (ADA1 [9-15])

Contents

Overview of Parent Aware.....	3
Growth of child care programs with Parent Aware Ratings	3
Star-Rated licensed child care programs increase statewide.....	4
An incremental expansion.....	4
Map 1 Implementation time periods of Parent Aware	4
Percent of Star-Rated licensed child care programs by implementation year.....	5
Graph 1 Percent of Rated licensed child care programs from Dec. 31, 2015, to Dec. 31, 2016, by counties where the first Full-Rating implementation period occurred	5
Chart 1 Rated licensed programs by implementation year and total, regardless of implementation year	5
Percent of Star-Rated licensed child care programs by location.....	6
Map 2 Minnesota Economic Development Districts and Regions	6
Percent of Star-Rated licensed child care programs by Economic Development Districts	7
Graph 2 Percent growth of Rated licensed child care programs from Dec. 31, 2015, to Dec. 31, 2016, by Economic Development District	7
Graph 3 Percent growth of Three- or Four-Star Rated licensed child care programs from Dec. 31, 2015, to Dec. 31, 2016, by Economic Development District	7
Graph 4 Percent of licensed child care programs by Star Rating and Economic Development District, December 2016	8
Graph 5 Percent of licensed family child care programs with Parent Aware Ratings by Economic Development District.....	8
Percent of Star-Rated licensed child care programs by Economic Development Regions.....	9
Graph 6 Growth of Star-Rated licensed child care programs from December 2015 to December 2016 by Economic Development Region	9
Graph 7 Percent of licensed child care programs by Star Rating and by Economic Development Region, December 2016	9
Percent of Star-Rated licensed child care programs by county.....	10
Highest rates of participation (more than 25 percent) as of December 2016:.....	10
Lowest rates of participation (5 percent or under) as of December 2016:.....	10
Percent increase from December 2015 to December 2016:.....	10
Percent decrease from December 2015 to December 2016:.....	10
Map 3 Percent of all Rated licensed programs by county, December 2016	11
Percent of licensed child care programs rated at Three- or Four-Star by county	12
Highest rates of participation as of December 2016:.....	12

Lowest rates of participation (5 percent or lower) as of December 2016:	12
Percent increase from December 2015 to December 2016:.....	12
Percent decrease from December 2015 to December 2016:.....	12
Map 4 Percent of licensed child care programs with a Three- or Four-Star Rating, December 2016	13
Parent Aware Rated child care programs by county, program type and Star-Rating (Dec. 31, 2016)	14
Region 1	14
Region 2	15
Region 3	16
Region 4	17
Region 5	18
Region 6E	19
Region 6W	19
Region 7E	20
Region 7W	20
Region 8	21
Region 9	22
Region 10	23
Region 11	24
Region and statewide grand totals.....	25
Data sources and notes	26
Sources	26
Notes	26

Overview of Parent Aware

Parent Aware is Minnesota's Quality Rating and Improvement System that offers tools and resources to help families find quality child care and early education, help programs improve practices, and help children benefit from care and education that will prepare them for school and life. Funding from Minnesota's federally funded Race to the Top—Early Learning Challenge Grant and Child Care Development funds, made it possible for Minnesota to expand Parent Aware incrementally. Since January 2015, Parent Aware became available statewide.

Growth of child care programs with Parent Aware Ratings

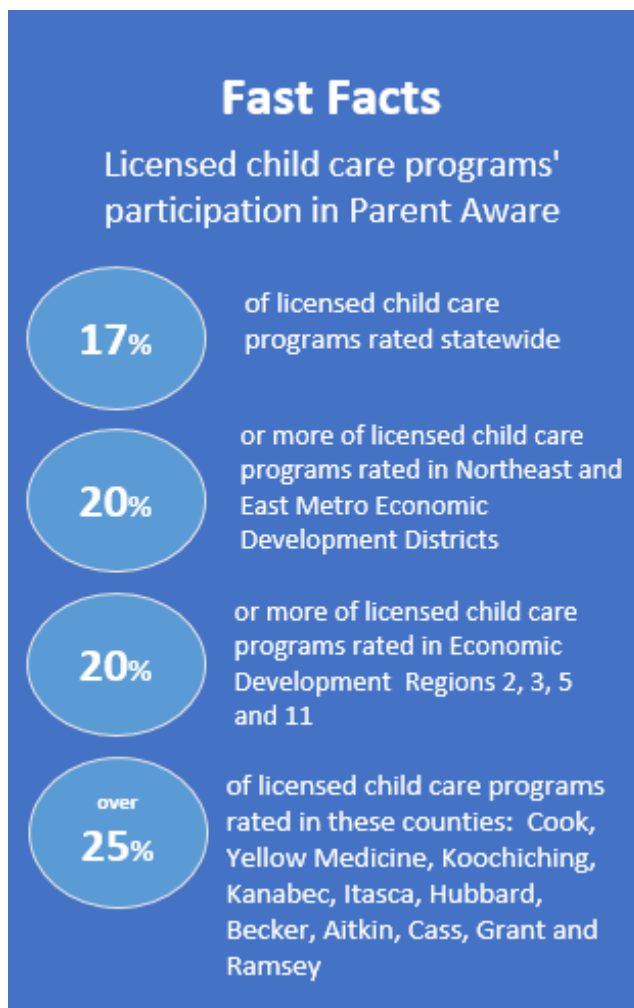
In March 2016, the Minnesota Department of Human Services (Department) released a brief, "Participation in Parent Aware Ratings across Minnesota." This is the annual update. The report highlights the percent of licensed child care¹ rated:

- By Parent Aware
- With higher (Three- or Four-Star Rating), or lower (One- or Two-Star Rating) Star-Ratings.

These measures are compared to:

- Statewide implementation year
- Geographic location: Economic Development Districts and Regions and county.

County-level detail is compiled in a chart with the following data elements: Number of licensed child care by type¹, percent of Star-Rated licensed child care,¹ count of licensed child care with either a One- or Two-Star Rating and Three- or Four-Star Rating, total of licensed Star-Rated child care, count of non-licensed Star-Rated Head Start/Early Head Start, count of license-exempt Star-Rated Public School Pre-Kindergarten,² total count of Star-Rated programs.



¹ Minnesota Department of Human Services licensed child care includes both child care centers and family child care providers.

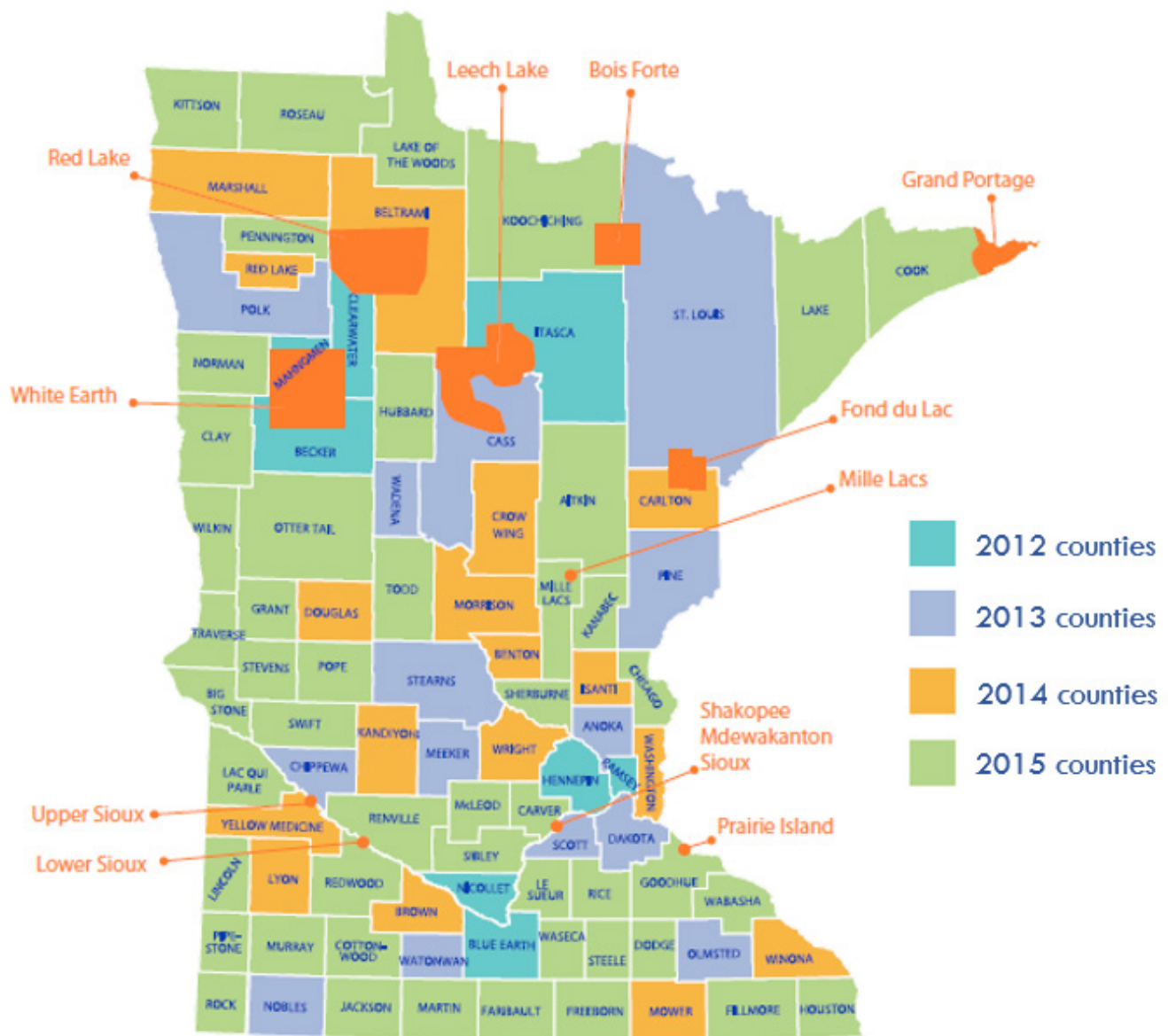
² As the total number of Public School Pre-Kindergartens and tribally licensed programs are not known, only the numbers of sites can be given. While there is a total number for statewide Head Start/Early Head Start, this information is not available at the geographic levels reviewed.

Star-Rated licensed child care programs increase statewide

An incremental expansion

Parent Aware started with Accelerated Pathway to Rating (APR) eligible child care³ across the state, and in eight counties and six tribal areas for non-accredited child care in 2012, its first year of implementation. In 2013, Parent Aware expanded to non-accredited child care in an additional 14 counties; in 2014, it expanded in an additional 23 counties. January 2015 was the first time all non-accredited child care programs were eligible to be rated in all Minnesota counties, receiving the first Parent Aware Ratings on July 1, 2015. January 2016 marked the second year that all child care programs could participate in Parent Aware.

Map 1 Implementation time periods of Parent Aware

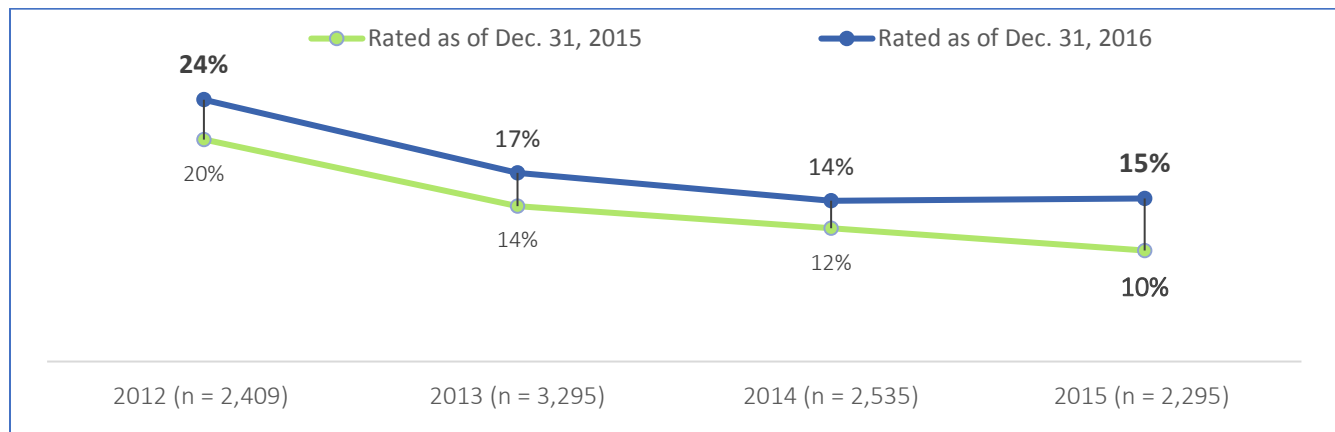


³ APR eligible programs are: Accredited child care, Public School Pre-Kindergarten and Head Start/Early Head Start.

Percent of Star-Rated licensed child care programs by implementation year

Current indicators of percentages of programs rated show that the length of time Parent Aware has been available in a geographic area matters. In the communities eligible in 2012, the current participation rate is 24 percent, increasing 4 percent from the prior year. The counties in the 2015 implementation period have 15 percent rated, increasing 5 percent from the previous year.

Graph 1 Percent of Rated licensed child care programs from Dec. 31, 2015, to Dec. 31, 2016, by counties where the first Full-Rating implementation period occurred



In 2016, the percent of One- or Two-Star Rated programs have stayed relatively similar to 2015; growth occurred in the percent of Three- or Four-Star Rated programs. All implementation periods have shown continual growth.

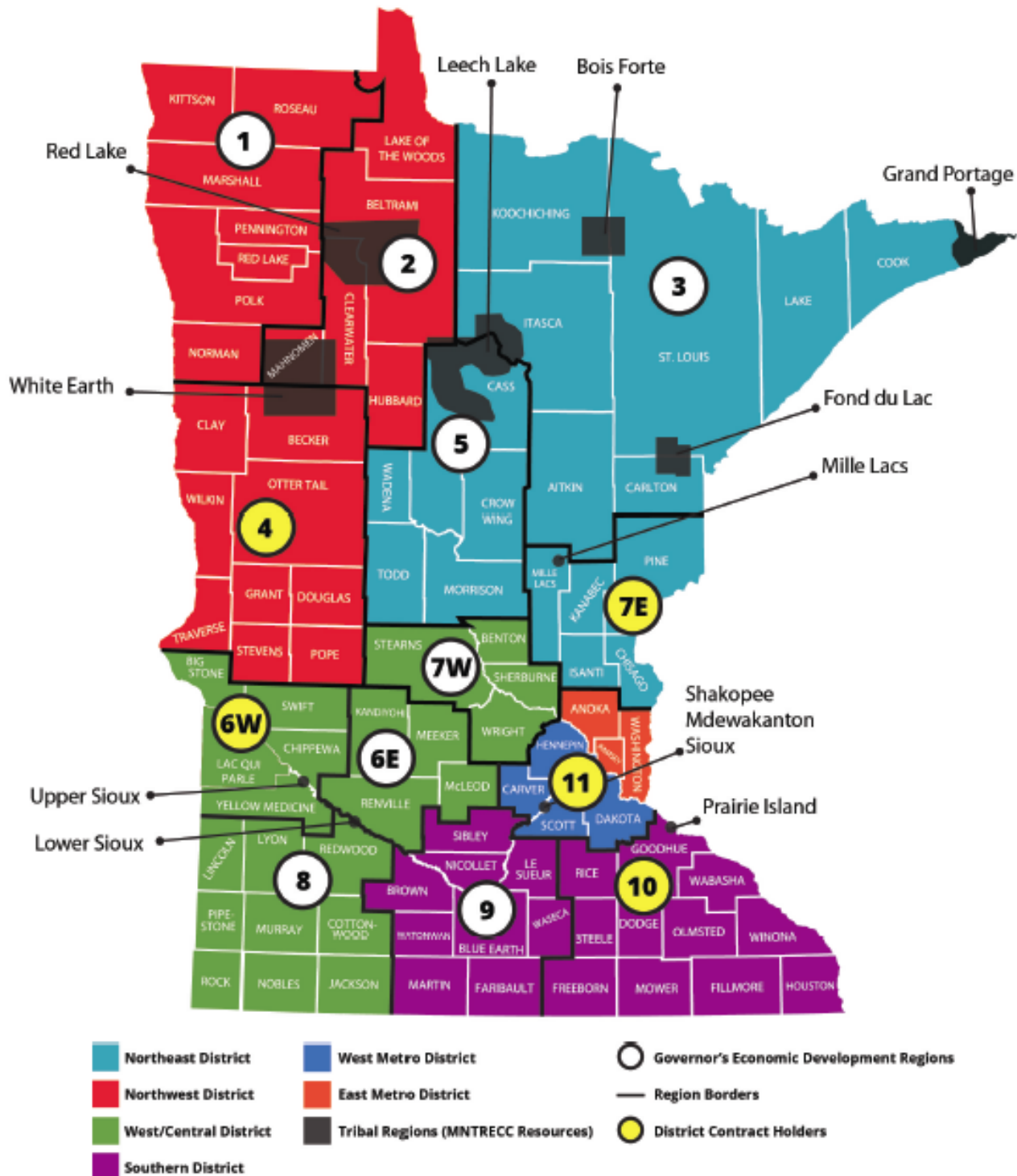
Chart 1 Rated licensed programs by implementation year and total, regardless of implementation year

Counties where the first possible full-rating date was in... (n = eligible licensed programs)	Percent of DHS licensed child care rated: One-Star or Two-Star	Percent of DHS licensed child care rated: Three-Star or Four-Star	Percent of DHS licensed child care with a Star-Rating (total)
2012 (n = 2,409)	6%	17%	24%
2013 (n = 3,295)	6%	11%	17%
2014 (n = 2,535)	5%	9%	14%
2015 (n = 2,296)	7%	8%	15%
All counties, regardless of implementation year (n = 10,534)	6%	11%	17%

Percent of Star-Rated licensed child care programs by location

The department tracks program participation in Parent Aware across six Economic Development Districts, 11 Economic Development Regions and 87 counties. Districts and regions had increases. Counties have largely shown increases.

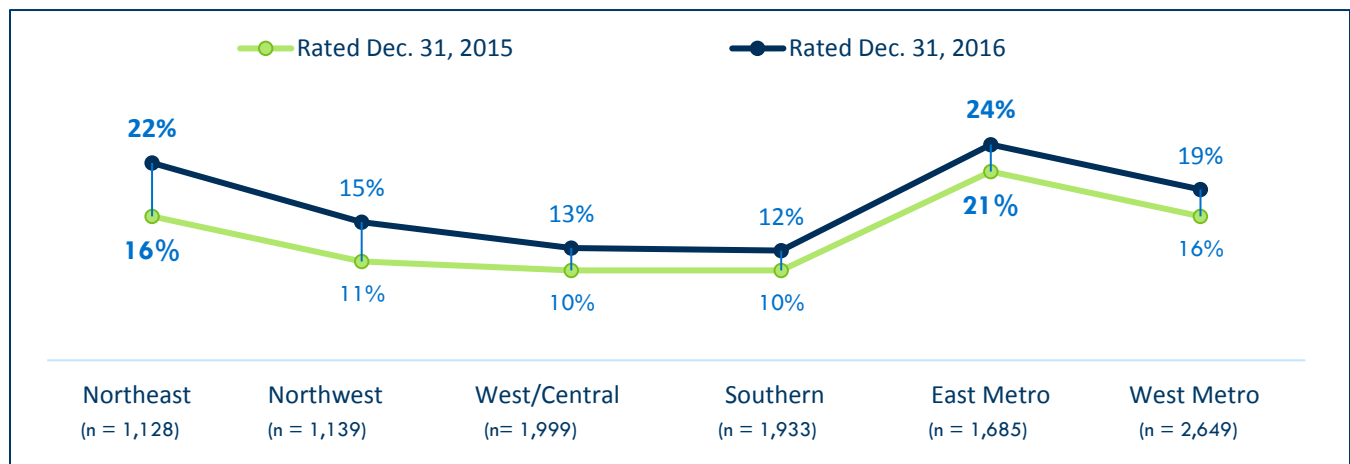
Map 2 Minnesota Economic Development Districts and Regions



Percent of Star-Rated licensed child care programs by Economic Development Districts

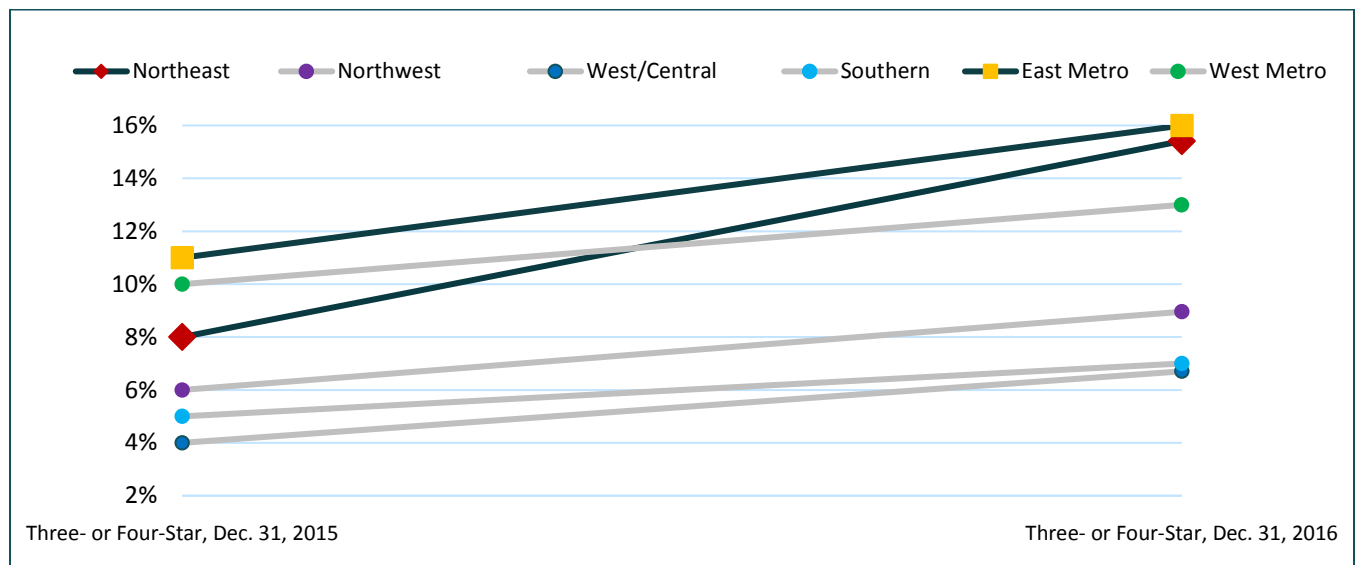
All districts increased the percentage of Star-Rated licensed child care programs since December 2015. East Metro retained the highest percent of programs with Parent Aware Ratings, with a 3 percent increase. Northeast saw the largest growth by percent of Parent Aware Rated programs with a 6 percent increase.

Graph 2 Percent growth of Rated licensed child care programs from Dec. 31, 2015, to Dec. 31, 2016, by Economic Development District

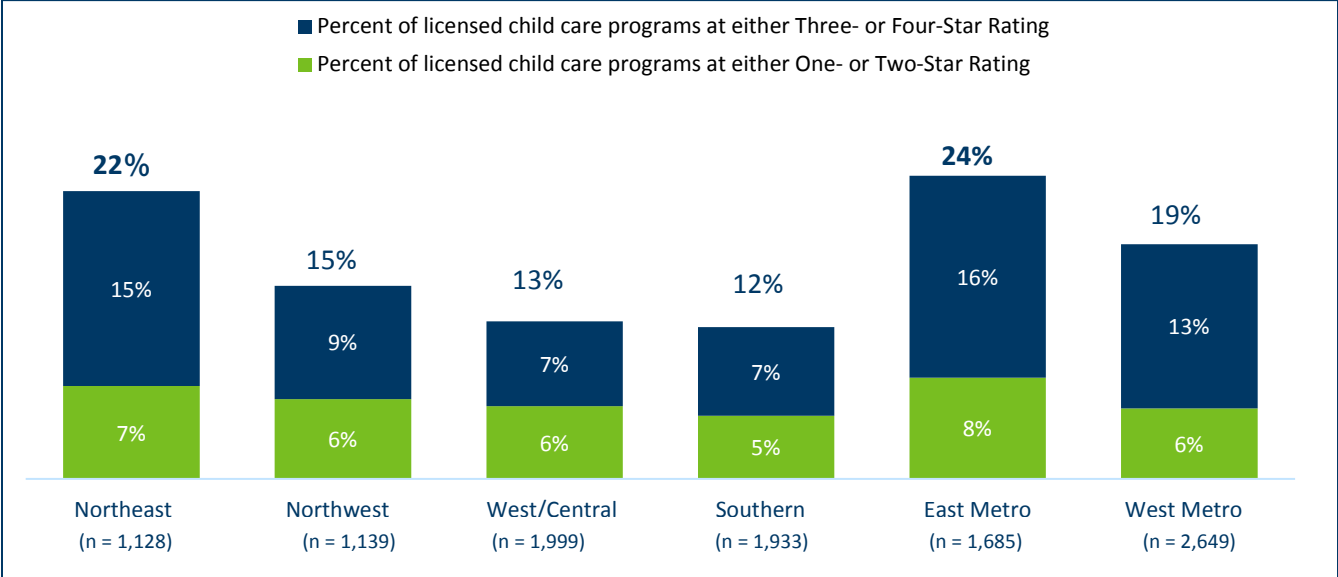


Ratings of Three- or Four-Star Rated programs also increased since December 2015 for all districts at varying growth rates. East Metro continued to have the highest percent of Parent Aware Rated licensed programs, while Northeast had the greatest growth of Parent Aware Rated licensed programs with either a Three- or Four-Star Rating, increasing from 8 percent to 15 percent.

Graph 3 Percent growth of Three- or Four-Star Rated licensed child care programs from Dec. 31, 2015, to Dec. 31, 2016, by Economic Development District



Graph 4 Percent of licensed child care programs by Star Rating and Economic Development District, December 2016

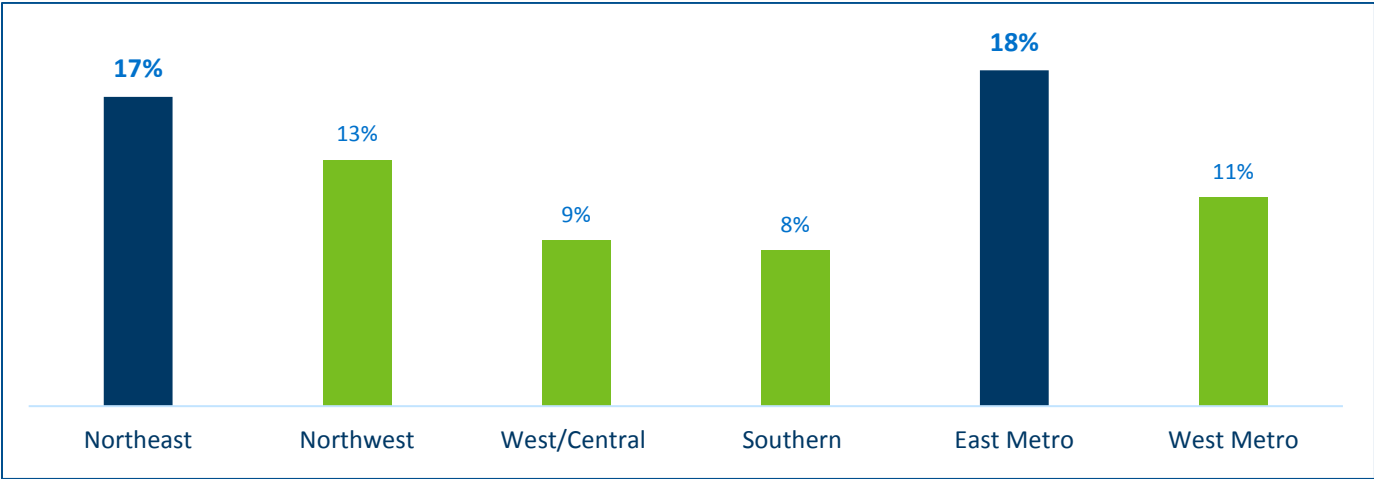


All districts have continued to expand, with two districts having a higher percent of Rated Programs at both rating level groups reviewed. Similarities of these districts are few:

- East Metro is urban, Northeast is rural
- East Metro has more eligible licensed child care centers (27 percent, with 47 percent accredited and 47 percent rated; Northeast has fewer (14 percent, with 6 percent accredited and 53 percent rated.⁴)

The two districts have achieved one similar milestone other districts have not: The percentage of licensed family child care providers rated. Both districts have rated at least 17 percent of eligible licensed family child care programs.

Graph 5 Percent of licensed family child care programs with Parent Aware Ratings by Economic Development District

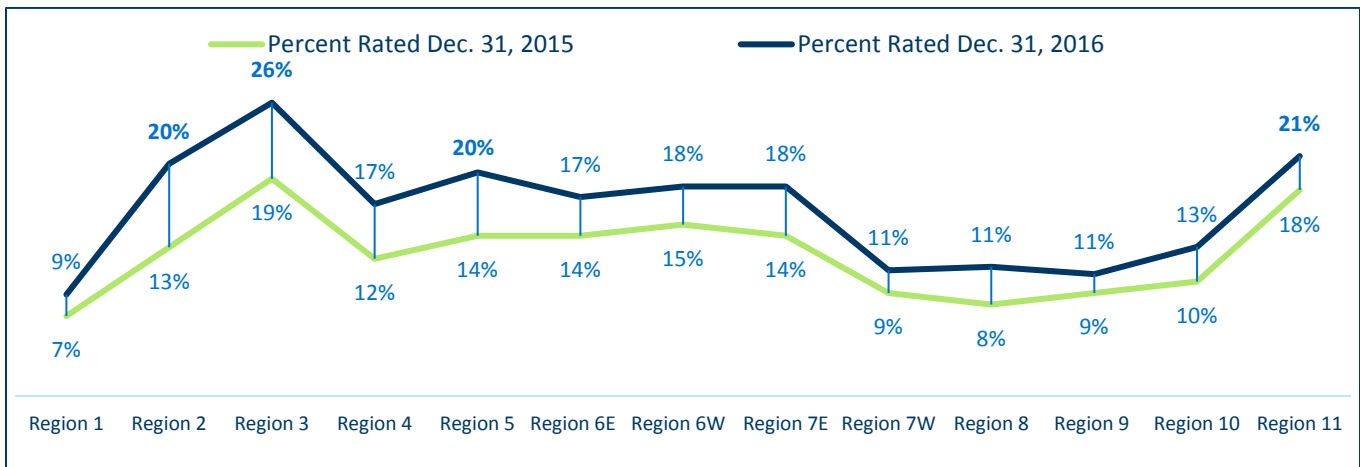


⁴ Percent of accredited child care centers and family child care is from NACCRRAware, the Child Care Aware national data system, extracted on Jan. 10, 2017, in comparison to all licensed program data from Minnesota Department of Human Services Licensing Look-up extracted on Jan. 10, 2017.

Percent of Star-Rated licensed child care programs by Economic Development Regions

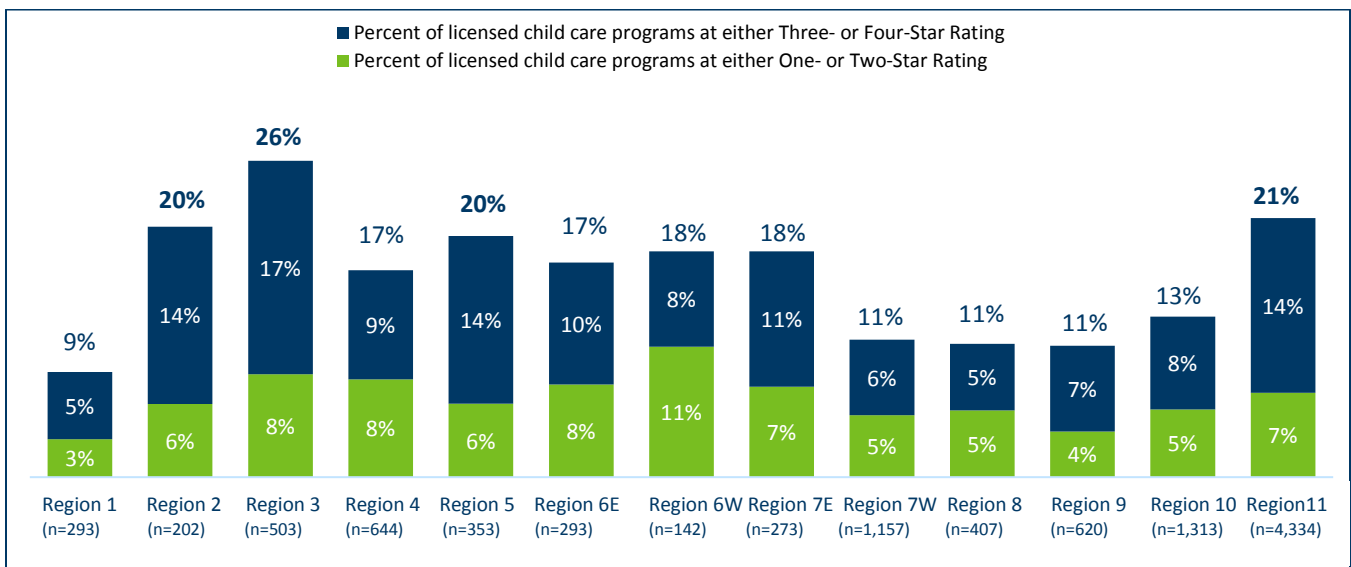
All regions increased the percent of Rated licensed child care programs in 2016. In 2015, no region had achieved the milestone of 20 percent of licensed child care programs with Star-Ratings; by the end of 2016, four are at or above this milestone: Region 2 in the Northwest District, Regions 3 and 5 in the Northeast District, and Region 11 in the West Metro and East Metro Districts. Region 3, in the Northeast District, retained the highest percent of Parent Aware Rated licensed programs, as well as the greatest growth over the past year.

Graph 6 Growth of Star-Rated licensed child care programs from December 2015 to December 2016 by Economic Development Region



Each region at or above 20 percent of rated licensed child care programs have at minimum 6 percent of programs at a One- or Two-Star Rating, and 14 percent of programs at a Three- or Four-Star Rating.

Graph 7 Percent of licensed child care programs by Star Rating and by Economic Development Region, December 2016



Percent of Star-Rated licensed child care programs by county

There are 183 Head Start/Early Head Start sites and 21 Public-School Pre-Kindergarten sites licensed as child care centers included on map 3. Refer to the detailed county list, [pages 12 – 16](#), for specific information regarding percent rated by county, numbers of licensed sites eligible for rating and non-licensed, license-exempt or tribally licensed programs with Star-Ratings.

Highest rates of participation (more than 25 percent) as of December 2016:

- Eleven counties have more than 25 percent of licensed child care programs rated, an increase from eight counties in 2015
- Ten counties have more than 30 percent of licensed child care programs rated, an increase from two counties in 2015
- Three counties have more than 35 percent of licensed child care programs rated, an increase from no counties in 2015; these counties, Cook, Koochiching and Kanabec are all in the Northeast District.

Lowest rates of participation (5 percent or under) as of December 2016:

- Eleven counties have 5 percent or less of licensed child care programs rated, decreasing from 16 counties in 2015
- Six counties have less than 5 percent of licensed child care programs rated, decreasing from 15 counties in 2015
- Two counties do not yet have any licensed child care programs rated: Kittson, with 14 eligible programs and Rock, with 39 eligible programs. Both were in the final implementation period starting in 2015.

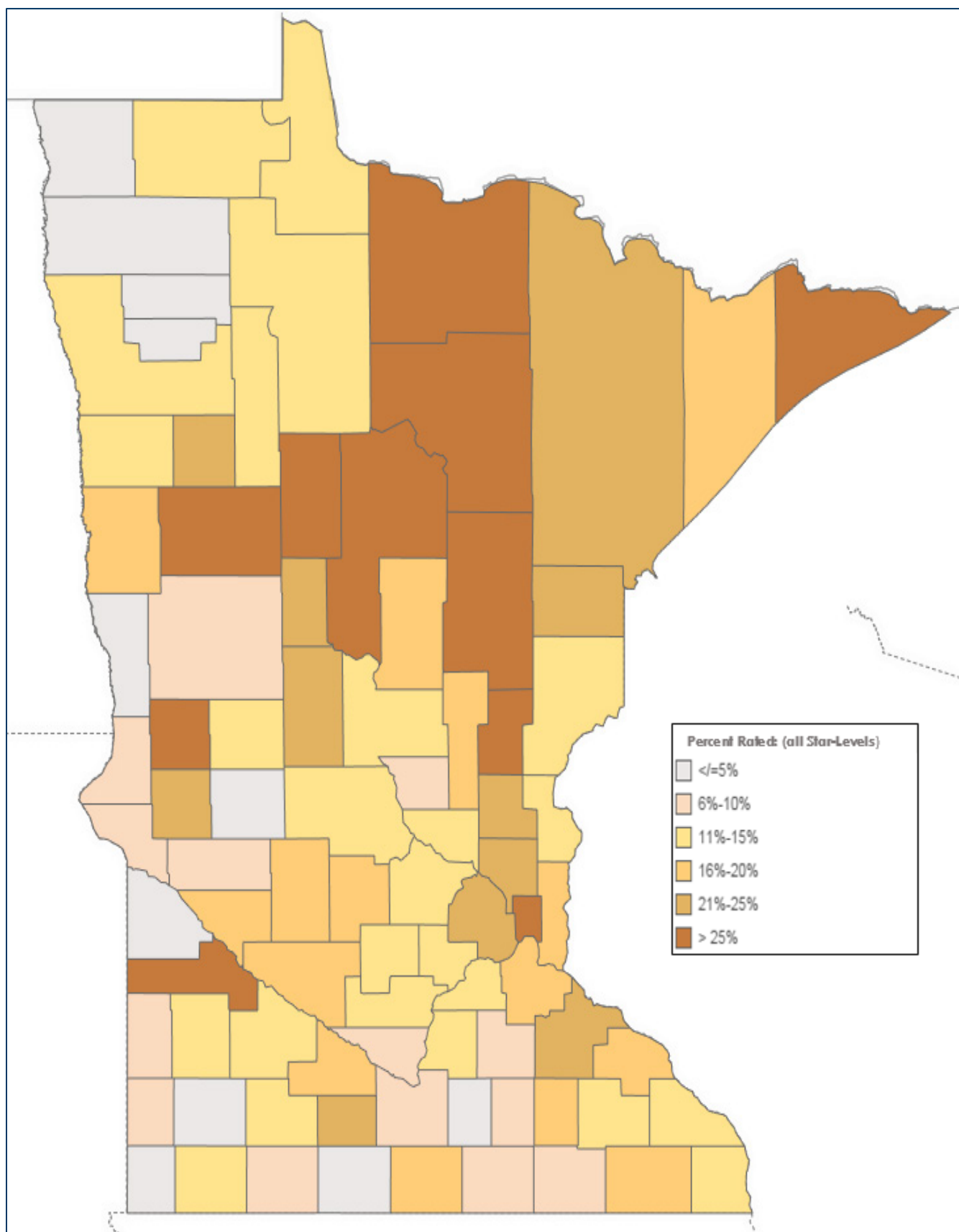
Percent increase from December 2015 to December 2016:

- Seventy-two counties saw a percentage increase in rated programs from January to December 2016.
- Twenty-three counties had more than a 5 percent increase of programs rated
- Six counties had a 10 percent increase or higher of programs rated
- Three counties had a 13 percent or higher increase of programs rated:
 - Stevens County increased from 8 percent in 2015 to 21 percent in 2016
 - Koochiching County increased from 22 percent in 2015 to 36 percent in 2016
 - Cook County increased from 8 percent in 2015 to 40 percent in 2016.

Percent decrease from December 2015 to December 2016:

- Four counties saw a percentage decrease in rated programs during 2016 due to programs closing or not keeping programs rated. These reflect a net loss of eight programs, including:
 - Watonwan County had a 13 percent decrease
 - Cottonwood County had a 3 percent decrease
 - Chippewa County had a 2 percent decrease
 - Swift County had a 1 percent decrease.

Map 3 Percent of all Rated licensed programs by county, December 2016



Percent of licensed child care programs rated at Three- or Four-Star by county

There are 183 Head Start/Early Head Start sites and 21 Public-School Pre-Kindergarten sites licensed as child care centers included on map 4. Refer to the detailed county list, pages 12 – 16, for specific information regarding percent rated by county, numbers of licensed sites eligible for rating and non-licensed, license-exempt or tribally licensed rated programs.

Highest rates of participation as of December 2016:

- Fifteen counties have more than 15 percent of licensed child care programs rated, an increase from six counties in 2015
- Eight counties have more than 20 percent of licensed child care programs rated, an increase from one county in 2015
- Three counties have more than 25 percent of licensed child care programs rated, an increase from no counties in 2015; these counties include Cook (40 percent) and Itasca (26 percent) from the Northeast District, and Hubbard (28 percent) from the Northwest District.

Lowest rates of participation (5 percent or lower) as of December 2016:

- Twenty-seven counties have 5 percent or lower of licensed child care programs rated, decreasing from 49 counties in 2015
- Nineteen counties have less than 5 percent of licensed child care programs rated, decreasing from 41 counties in 2015
- Nine counties have no licensed child care programs rated, decreasing from 12 counties in 2015.

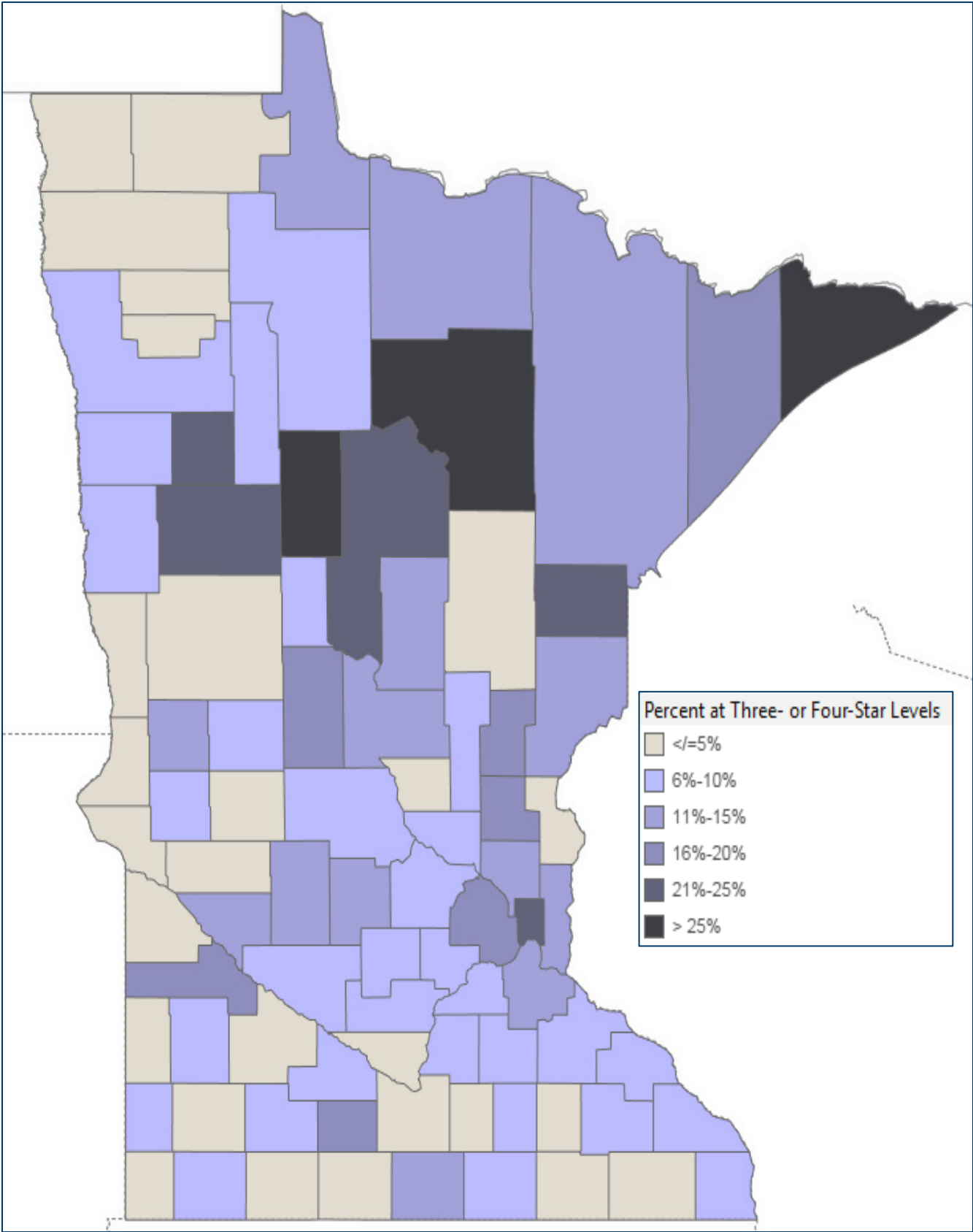
Percent increase from December 2015 to December 2016:

- Seventy-two counties saw a percentage increase in rated programs from January to December 2016.
- Seventeen counties had more than a 5 percent increase of programs rated
- Six counties had a 10 percent increase or higher of programs rated
- Three counties had 13 percent or higher increase of programs rated, including:
 - Cass County increased from 12 percent in 2015 to 25 percent in 2016
 - Kannabec County increased from 6 percent in 2015 to 20 percent in 2016
 - Cook County increased from 0 percent in 2015 to 40 percent in 2016.

Percent decrease from December 2015 to December 2016:

- Four counties saw a percentage decrease in rated programs due to programs closing, increased child care programs, or not keeping programs rated. These reflect a net loss of four programs, including:
 - Pope County had a 3 percent decrease
 - Nicollet County had a 2 percent decrease
 - Grant County had a 1 percent decrease
 - Chippewa County had a 1 percent decrease.

Map 4 Percent of licensed child care programs with a Three- or Four-Star Rating, December 2016



Parent Aware Rated child care programs by county, program type and Star-Rating (Dec. 31, 2016)

Region 1

Counties by Economic Development Region (year of implementation)	Percent of Parent Aware Rated licensed child care ⁵	Eligible licensed child care centers ⁶	One- or Two-Star Rated child care centers ⁵	Three- or Four-Star Rated child care centers ⁵	All Star-Rated child care centers ⁵	Eligible licensed family child care ⁷	One- or Two-Star Rated family child care ⁵	Three- or Four-Star Rated family child care ⁵	All Star-Rated family child care ⁵	Star-Rated Non-licensed Head Start/ Early Head Start ⁸	Star-Rated Non-licensed Public-School Pre-K ⁹	County total of programs with Star-Ratings
Kittson (2015)	0%	0	0	0	0	14	0	0	0	1	1	2
Marshall (2014)	3%	1	0	0	0	30	0	1	1	3	3	7
Norman (2014)	13%	2	1	1	2	13	0	0	0	0	2	4
Pennington (2015)	5%	3	0	1	1	54	1	1	2	0	2	5
Polk (2013)	12%	9	0	3	3	86	3	5	8	2	8	21
Red Lake (2014)	11%	1	0	0	0	18	0	1	1	1	3	6
Roseau (2015)	11%	1	0	1	1	61	4	2	6	2	1	10
Region 1 Total	9%	17	1	6	7	276	8	10	18	9	20	55

⁵ This includes Minnesota Department of Human Services licensed child care programs only.

⁶ This includes Minnesota Department of Human Services licensed child care centers only. This number includes 166 Head Start/Early Head Start and 21 Public School Pre-Kindergarten sites licensed by the department. Tribally licensed programs are not included in the chart, as the total number of programs is not known. Tribally licensed programs are indicated in footnotes if not included in either Head Start/Early Head Start or Public School Pre-Kindergarten.

⁷ This includes Minnesota Department of Human Services licensed family child care only. This number includes 17 Head Start/Early Head Start sites licensed by the department. Tribally licensed programs are not included as the total number of programs is not known.

⁸ These Head Start/Early Head Start sites are not licensed by the Minnesota Department of Human Services. These include 10 tribally licensed and one Rule 22 governed site, with the remainder license-exempt. Total N value = 81. All Head Start/Early Head Start are Four-Star Rated.

⁹ These Public School Pre-Kindergarten sites are not licensed by the Minnesota Department of Human Services. These include a total N value of 702. The March 2016 report included 45 Early Childhood Special Education sites, which are being phased out of Parent Aware and not included. All Public School Pre-Kindergarten are Four-Star Rated.

Region 2

Counties by Economic Development Region (year of implementation)	Percent of Parent Aware Rated licensed child care	Eligible licensed child care centers	One- or Two-Star Rated child care centers	Three- or Four-Star Rated child care centers	All Star-Rated child care centers	Eligible licensed family child care	One- or Two-Star Rated family child care	Three- or Four-Star Rated family child care	All Star-Rated family child care	Star-Rated Non-licensed Head Start/ Early Head Start	Star-Rated Non-licensed Public-School Pre-K	County total of programs with Star-Ratings
Beltrami¹⁰ (2014)	15%	8	1	3	4	106	7	6	13	1	6	24
Clearwater¹¹ (2012)	15%	1	0	1	1	19	1	1	2	1	2	6
Hubbard (2015)	34%	3	0	1	1	50	3	14	17	0	2	20
Lake of the Woods (2015)	14%	0	0	0	0	7	0	1	1	1	1	3
Mahnomen¹² (2012)	25%	1	0	1	1	7	0	1	1	3	1	6
Region 2 total	20%	13	1	6	7	189	11	23	34	6	12	59

¹⁰ Beltrami County has one rated tribally licensed family child care program with a One-Star Rating

¹¹ Clearwater County has two rated tribally licensed family child care programs; both are in the top tiers.

¹² Mahnomen County has five rated tribally licensed family child care programs; all are in the top tiers.

Region 3

Counties by Economic Development Region (year of implementation)	Percent of Parent Aware Rated licensed child care	Eligible licensed child care centers	One- or Two-Star Rated child care centers	Three- or Four-Star Rated child care centers	All Star-Rated child care centers	Eligible licensed family child care	One- or Two-Star Rated family child care	Three- or Four-Star Rated family child care	All Star-Rated family child care	Star-Rated Non-licensed Head Start/ Early Head Start	Star-Rated Non-licensed Public-School Pre-K	County total of programs with Star-Ratings
Aitkin (2015)	32%	0	0	0	0	22	6	1	7	1	4	12
Carlton (2014)	25%	9	0	6	6	51	2	7	9	2	10	27
Cook (2015)	40%	0	0	0	0	10	0	4	4	1	1	6
Itasca (2012)	34%	15	0	11	11	70	7	11	18	3	4	36
Koochiching (2015)	36%	2	0	2	2	23	6	1	7	0	1	10
Lake (2015)	18%	1	0	1	1	10	0	1	1	0	2	4
St. Louis (2013)	22%	63	6	23	29	227	15	19	34	9	21	93
Region 3 total	26%	90	6	43	49	413	36	44	80	16	43	188

Region 4

Counties by Economic Development Region (year of implementation)	Percent of Parent Aware Rated licensed child care	Eligible licensed child care centers	One- or Two-Star Rated child care centers	Three- or Four-Star Rated child care centers	All Star-Rated child care centers	Eligible licensed family child care	One- or Two-Star Rated family child care	Three- or Four-Star Rated family child care	All Star-Rated family child care	Star-Rated Non-licensed Head Start/ Early Head Start	Star-Rated Non-licensed Public-School Pre-K	County total of programs with Star-Ratings
Becker ¹³ (2012)	34%	8	1	5	6	81	10	14	24	3	5	38
Clay (2015)	20%	15	0	6	6	163	19	10	29	0	6	41
Douglas (2014)	11%	12	0	5	5	119	6	4	10	0	3	18
Grant (2015)	30%	2	0	2	2	18	3	1	4	0	3	9
Otter Tail (2014)	9%	12	0	2	2	122	5	5	10	3	8	23
Pope (2015)	3%	3	1	0	1	26	0	0	0	1	1	3
Stevens (2015)	21%	5	1	2	3	28	3	1	4	0	2	9
Traverse (2015)	10%	0	0	0	0	10	1	0	1	0	2	3
Wilkin (2015)	5%	1	0	0	0	19	1	0	1	1	4	6
Region 4 total	17%	58	3	22	25	586	48	35	83	8	34	150

¹³ Becker County has nine rated tribally licensed family child care programs; eight are in the top tiers; one is Two-Star Rated.

Region 5

Counties by Economic Development Region (year of implementation)	Percent of Parent Aware Rated licensed child care	Eligible licensed child care centers	One- or Two-Star Rated child care centers	Three- or Four-Star Rated child care centers	All Star-Rated child care centers	Eligible licensed family child care	One- or Two-Star Rated family child care	Three- or Four-Star Rated family child care	All Star-Rated family child care	Star-Rated Non-licensed Head Start/ Early Head Start	Star-Rated Non-licensed Public-School Pre-K	County total of programs with Star-Ratings
Cass ¹⁴ (2013)	31%	4	0	3	3	44	3	9	12	8	6	29
Crow Wing (2014)	18%	20	3	8	11	94	5	5	10	1	8	30
Morrison (2014)	14%	7	0	3	3	102	2	10	12	1	8	24
Todd (2015)	21%	5	0	5	5	42	2	3	5	2	5	17
Wadena (2013)	23%	2	2	0	2	33	4	2	6	2	4	14
Region 5 total	20%	38	5	19	24	315	16	29	45	14	31	114

¹⁴ Cass County has two rated tribally licensed family child care programs; one is Four-Star Rated, one is Two-Star Rated.

Region 6E

Counties by Economic Development Region (year of implementation)	Percent of Parent Aware Rated licensed child care	Eligible licensed child care centers	One- or Two-Star Rated child care centers	Three- or Four-Star Rated child care centers	All Star-Rated child care centers	Eligible licensed family child care	One- or Two-Star Rated family child care	Three- or Four-Star Rated family child care	All Star-Rated family child care	Star-Rated Non-licensed Head Start/ Early Head Start	Star-Rated Non-licensed Public-School Pre-K	County total of programs with Star-Ratings
Kandiyohi (2014)	20%	10	1	6	7	99	6	9	15	2	6	30
McLeod (2015)	15%	12	2	5	7	95	7	2	9	1	6	23
Meeker (2013)	17%	5	0	5	5	36	2	0	2	0	4	11
Renville (2015)	17%	6	1	2	3	30	3	0	3	0	6	12
Region 6E total	17%	33	4	18	22	260	18	11	29	3	22	76

Region 6W

Counties by Economic Development Region (year of implementation)	Percent of Parent Aware Rated licensed child care	Eligible licensed child care centers	One- or Two-Star Rated child care centers	Three- or Four-Star Rated child care centers	All Star-Rated child care centers	Eligible licensed family child care	One- or Two-Star Rated family child care	Three- or Four-Star Rated family child care	All Star-Rated family child care	Star-Rated Non-licensed Head Start/ Early Head Start	Star-Rated Non-licensed Public-School Pre-K	County total of programs with Star-Ratings
Big Stone (2015)	6%	0	0	0	0	17	1	0	1	2	2	5
Chippewa (2013)	17%	3	1	2	3	32	1	2	3	0	2	8
Lac qui Parle (2015)	5%	2	0	0	0	19	1	0	1	2	3	6
Swift (2014)	10%	1	1	0	1	28	2	0	2	3	3	9
Yellow Medicine (2014)	38%	3	0	2	2	37	8	5	13	1	4	20
Region 6W total	18%	9	2	4	6	133	13	7	20	8	14	48

Region 7E

Counties by Economic Development Region (year of implementation)	Percent of Parent Aware Rated licensed child care	Eligible licensed child care centers	One- or Two-Star Rated child care centers	Three- or Four-Star Rated child care centers	All Star-Rated child care centers	Eligible licensed family child care	One- or Two-Star Rated family child care	Three- or Four-Star Rated family child care	All Star-Rated family child care	Star-Rated Non-licensed Head Start/ Early Head Start	Star-Rated Non-licensed Public-School Pre-K	County total of programs with Star-Ratings
Chisago (2015)	13%	11	1	1	2	83	6	4	10	2	10	24
Isanti (2014)	21%	10	0	4	4	37	2	4	6	1	3	14
Kanabec (2015)	34%	3	0	0	0	32	5	7	12	0	2	14
Mille Lacs (2014)	18%	4	2	1	3	41	3	2	5	2	6	16
Pine (2013)	15%	5	1	2	3	47	0	5	5	3	5	16
Region 7E total	18%	33	4	8	12	240	16	22	38	8	26	84

Region 7W

Counties by Economic Development Region (year of implementation)	Percent of Parent Aware Rated licensed child care	Eligible licensed child care centers	One- or Two-Star Rated child care centers	Three- or Four-Star Rated child care centers	All Star-Rated child care centers	Eligible licensed family child care	One- or Two-Star Rated family child care	Three- or Four-Star Rated family child care	All Star-Rated family child care	Star-Rated Non-licensed Head Start/ Early Head Start	Star-Rated Non-licensed Public-School Pre-K	County total of programs with Star-Ratings
Benton (2014)	10%	10	0	2	2	136	9	4	13	0	2	15
Sherburne (2015)	11%	23	1	4	5	197	10	9	19	0	7	31
Stearns (2013)	12%	42	6	15	21	407	19	14	33	0	16	70
Wright (2014)	11%	35	2	14	16	307	11	9	20	0	19	55
Region 7W total	11%	110	9	35	44	1,047	49	36	85	0	44	171

Region 8

Counties by Economic Development Region (year of implementation)	Percent of Parent Aware Rated licensed child care	Eligible licensed child care centers	One- or Two-Star Rated child care centers	Three- or Four-Star Rated child care centers	All Star-Rated child care centers	Eligible licensed family child care	One- or Two-Star Rated family child care	Three- or Four-Star Rated family child care	All Star-Rated family child care	Star-Rated Non-licensed Head Start/ Early Head Start	Star-Rated Non-licensed Public-School Pre-K	County total of programs with Star-Ratings
Cottonwood (2015)	13%	4	0	1	1	36	2	2	4	0	2	7
Jackson (2015)	9%	4	1	0	1	30	1	1	2	0	3	6
Lincoln (2014)	9%	0	0	0	0	23	1	1	2	0	3	5
Lyon (2014)	15%	14	3	2	5	100	6	6	12	0	9	26
Murray (2015)	5%	1	1	0	1	18	0	0	0	0	1	2
Nobles (2013)	13%	6	1	3	4	42	1	1	2	0	6	12
Pipestone (2015)	8%	5	0	2	2	34	0	1	1	0	3	6
Redwood (2015)	14%	2	0	0	0	49	5	2	7	0	4	11
Rock (2015)	0%	1	0	0	0	38	0	0	0	0	3	3
Region 8 total	11%	37	6	8	14	370	16	14	30	0	34	78

Region 9

Counties by Economic Development Region (year of implementation)	Percent of Parent Aware Rated licensed child care	Eligible licensed child care centers	One- or Two-Star Rated child care centers	Three- or Four-Star Rated child care centers	All Star-Rated child care centers	Eligible licensed family child care	One- or Two-Star Rated family child care	Three- or Four-Star Rated family child care	All Star-Rated family child care	Star-Rated Non-licensed Head Start/ Early Head Start	Star-Rated Non-licensed Public-School Pre-K	County total of programs with Star-Ratings
Blue Earth (2012)	9%	24	3	4	7	124	3	4	7	0	9	23
Brown (2014)	16%	7	1	2	3	89	4	8	12	0	8	23
Faribault (2015)	16%	5	0	3	3	27	1	1	2	0	3	8
Le Sueur (2015)	14%	5	0	2	2	80	4	6	10	0	5	17
Martin (2015)	3%	5	0	1	1	61	0	1	1	0	6	8
Nicollet (2012)	6%	19	2	1	3	62	0	2	2	0	6	11
Sibley (2015)	15%	0	0	0	0	46	4	3	7	0	5	12
Waseca (2015)	2%	5	0	1	1	38	0	0	0	0	5	7
Watonwan (2013)	22%	4	0	3	3	19	1	1	2	0	5	9
Region 9 total	11%	74	6	17	23	546	17	26	43	0	52	118

Region 10

Counties by Economic Development Region (year of implementation)	Percent of Parent Aware Rated licensed child care	Eligible licensed child care centers	One- or Two-Star Rated child care centers	Three- or Four-Star Rated child care centers	All Star-Rated child care centers	Eligible licensed family child care	One- or Two-Star Rated family child care	Three- or Four-Star Rated family child care	All Star-Rated family child care	Star-Rated Non-licensed Head Start/ Early Head Start	Star-Rated Non-licensed Public-School Pre-K	County total of programs with Star-Ratings
Dodge (2015)	19%	4	0	1	1	71	13	0	13	0	3	17
Fillmore (2015)	17%	5	2	1	3	36	3	1	4	1	6	14
Freeborn (2015)	10%	5	0	4	4	56	1	1	2	0	2	8
Goodhue (2015)	23%	13	1	7	8	92	14	2	16	0	9	33
Houston (2015)	11%	7	0	2	2	55	3	2	5	1	3	11
Mower (2014)	7%	7	0	3	3	74	2	1	3	1	8	15
Olmsted (2013)	13%	49	1	24	25	380	14	18	32	4	11	75
Rice (2014)	8%	15	0	6	6	124	3	2	5	0	4	15
Steele (2015)	10%	10	2	3	5	122	1	7	8	0	4	17
Wabasha (2015)	17%	5	1	1	2	60	4	5	9	0	3	14
Winona (2014)	12%	16	1	8	9	107	6	0	6	1	6	22
Region 10 total	13%	136	8	60	68	1,177	64	39	103	8	59	241

Region 11

Counties by Economic Development Region (year of implementation)	Percent of Parent Aware Rated licensed child care	Eligible licensed child care centers	One- or Two-Star Rated child care centers	Three- or Four-Star Rated child care centers	All Star-Rated child care centers	Eligible licensed family child care	One- or Two-Star Rated family child care	Three- or Four-Star Rated family child care	All Star-Rated family child care	Star-Rated Non-licensed Head Start/ Early Head Start	Star-Rated Non-licensed Public-School Pre-K	County total of programs with Star-Ratings
Anoka (2013)	23%	93	4	47	51	506	55	34	89	0	41	181
Carver (2015)	14%	35	0	14	14	137	8	2	10	0	16	40
Dakota (2013)	16%	141	2	50	52	596	33	30	63	0	37	152
Hennepin (2012)	22%	494	23	176	199	851	55	44	99	0	118	417
Ramsey (2012)	28%	189	5	85	90	444	45	45	90	1	55	236
Scott (2013)	15%	37	1	13	14	358	31	16	47	0	14	75
Washington (2014)	20%	72	0	27	27	381	34	31	65	0	30	122
Rice (2014)	8%	15	0	6	6	124	3	2	5	0	4	15
Steele (2015)	10%	10	2	3	5	122	1	7	8	0	4	17
Wabasha (2015)	17%	5	1	1	2	60	4	5	9	0	3	14
Winona (2014)	12%	16	1	8	9	107	6	0	6	1	6	22
Region 11 total	21%	1,061	35	412	447	3,273	261	202	463	1	311	1223

Region and statewide grand totals

Economic Development Regions and Minnesota state total	Percent of Parent Aware Rated licensed child care	Eligible licensed child care centers	One- or Two-Star Rated child care centers	Three- or Four-Star Rated child care centers	All Star-Rated child care centers	Eligible licensed family child care	One- or Two-Star Rated family child care	Three- or Four-Star Rated family child care	All Star-Rated family child care	Star-Rated Non-licensed Head Start/ Early Head Start	Star-Rated Non-licensed Public-School Pre-K	County total of programs with Star-Ratings
Region 1	9%	17	1	6	7	276	8	10	18	9	20	55
Region 2	20%	13	1	6	7	189	11	23	34	6	12	59
Region 3	26%	90	6	43	49	413	36	44	80	16	43	188
Region 4	17%	58	3	22	25	586	48	35	83	8	34	150
Region 5	20%	38	5	19	24	315	16	29	45	14	31	114
Region 6E	17%	33	4	18	22	260	18	11	29	3	22	76
Region 6W	18%	9	2	4	6	133	13	7	20	8	14	48
Region 7E	18%	33	4	8	12	240	16	22	38	8	26	84
Region 7W	11%	110	9	35	44	1,047	49	36	85	0	44	171
Region 8	11%	37	6	8	14	370	16	14	30	0	34	78
Region 9	11%	74	6	17	23	546	17	26	43	0	52	118
Region 10	13%	136	8	60	68	1,177	64	39	103	8	59	241
Region 11	21%	1,061	35	412	447	3,273	261	202	463	1	311	1223
State total	17%	1,709	90	658	748	8,825	573	498	1,071	162	702	2,605

Data sources and notes

Sources

- Minnesota Department of Human Services licensed child care data is from its Licensing Look-up on Jan. 10, 2017.
- The count of Parent Aware Rated child care is from Develop, Minnesota's Quality Improvement and Registry Tool on Jan. 10, 2017.
- Data referenced from December 2015 is from the Minnesota Department of Human Services report, "Participation in Parent Aware Ratings across Minnesota," March 2016.

Notes

Calculations for percentages are: The number of Minnesota Department of Human Services licensed child care programs with Parent Aware Ratings divided by the total number of the department's licensed child care programs. Besides family child care and child care centers, these numbers include 183 Head Start/Early Head Start and 21 Public School Pre-Kindergarten sites.