

Quality Counts *California*

Raising the Quality of Early Learning and Care

**Beyond Centers and Preschools:
Increasing Quality and Supporting Children and
Families Across the Continuum of Early Learning
Settings**

July 16, 2018

Gloria Corral – First 5 San Diego

Malia Ramler and Margaret Jerene – First 5 Alameda

Kristin Torres – First 5 California

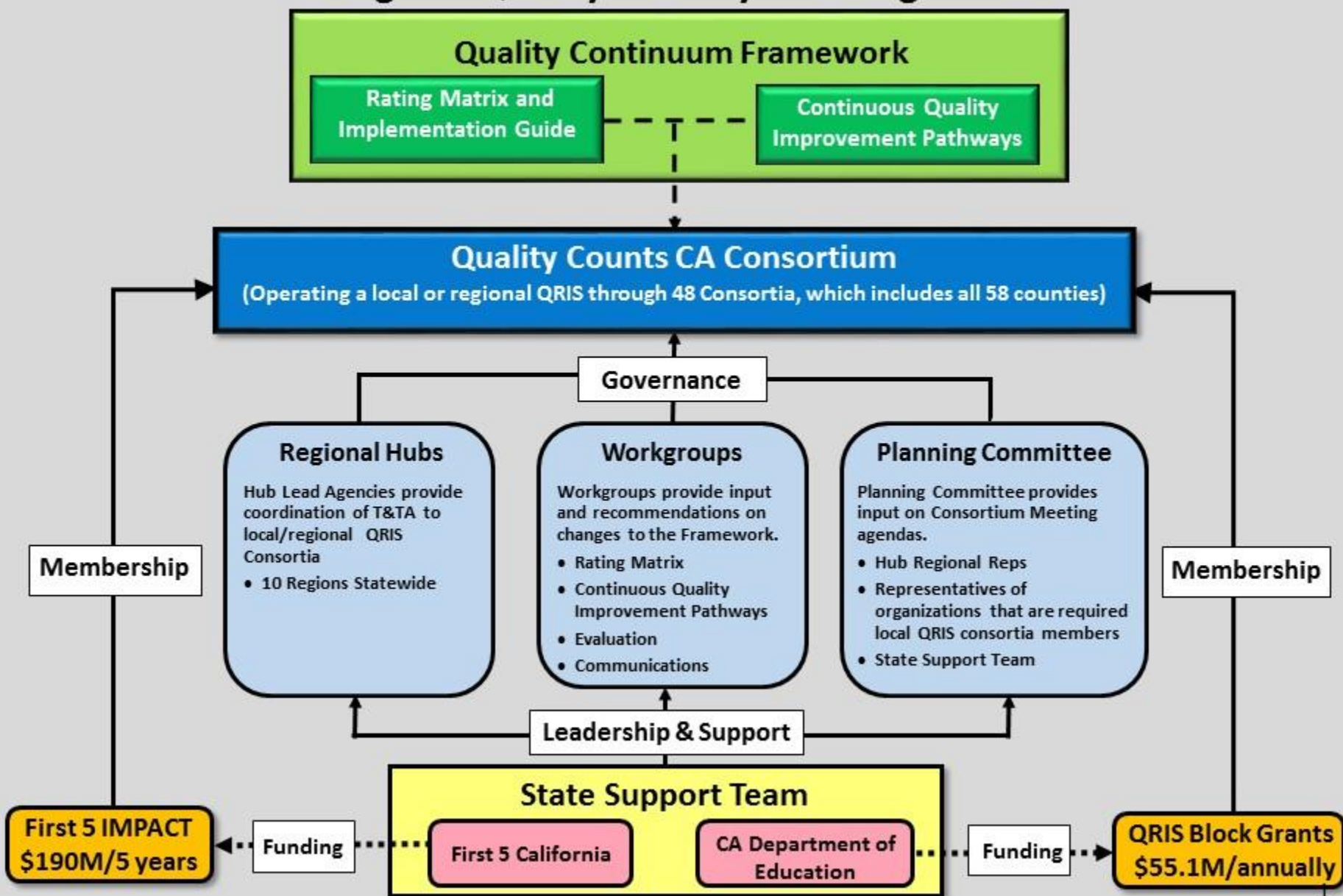
In partnership with:

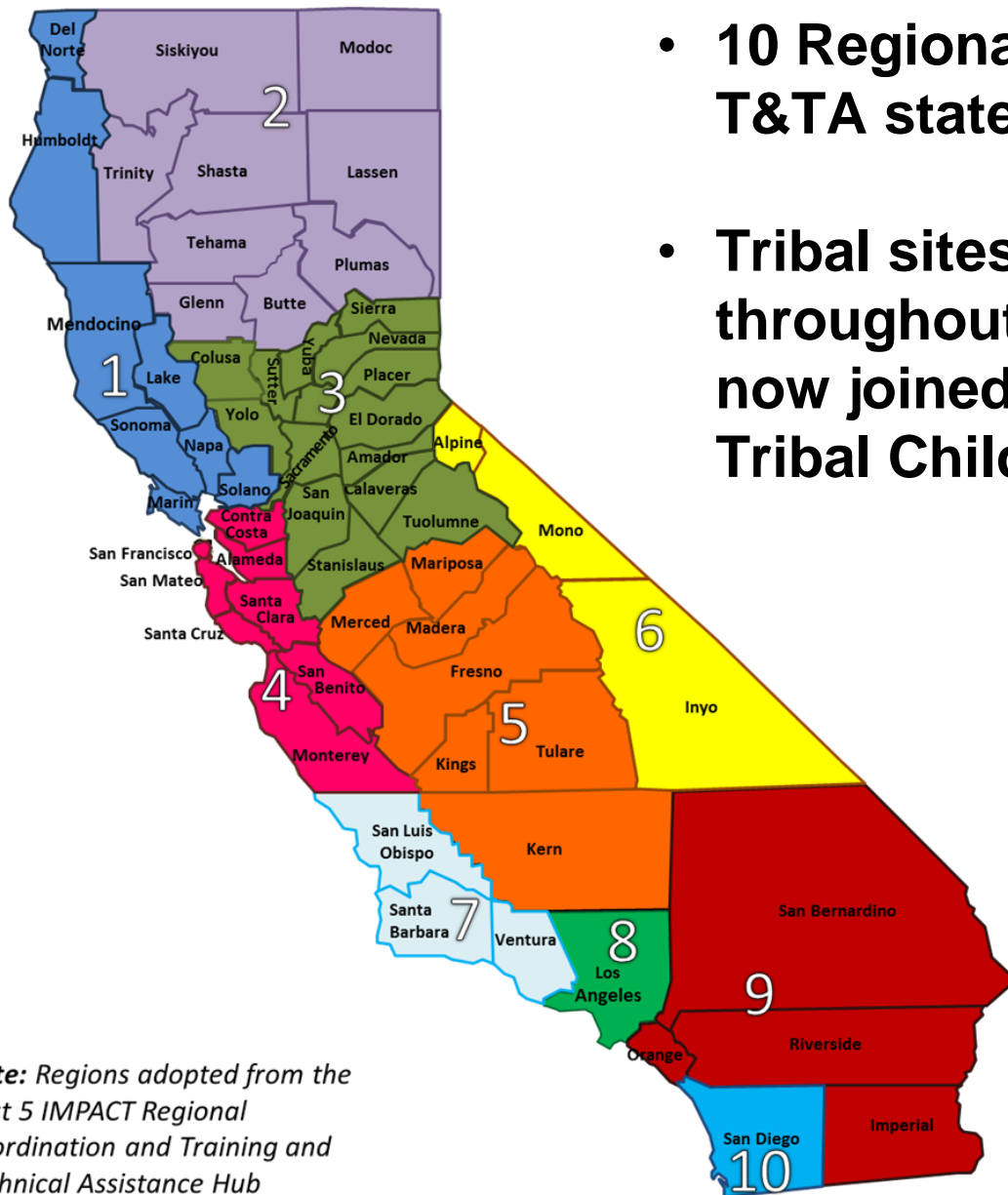


California Department of
EDUCATION



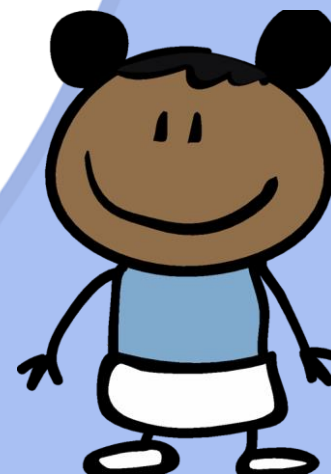
Quality Counts California: Raising the Quality Of Early Learning and Care





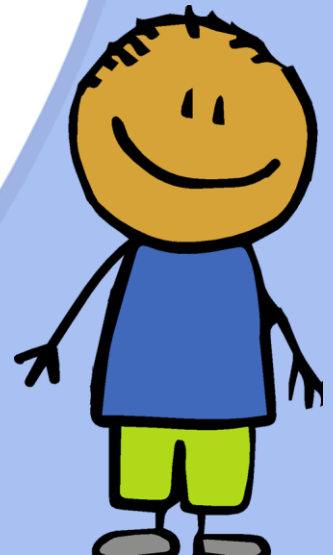
Note: Regions adopted from the First 5 IMPACT Regional Coordination and Training and Technical Assistance Hub Regions

- 10 Regional Hubs providing T&TA statewide
- Tribal sites located throughout the state have now joined as Region 11 – Tribal Child Care Consortium



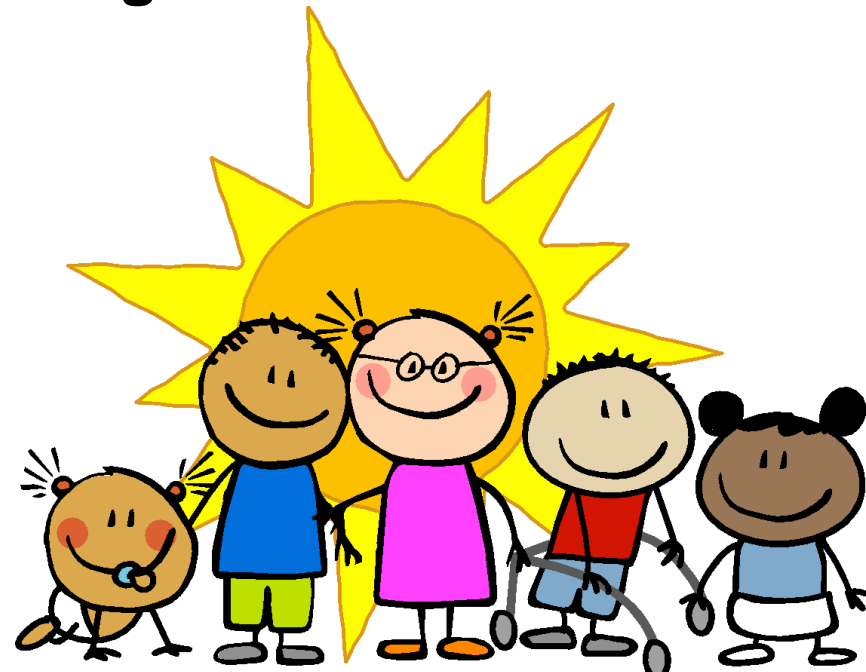
Group discussion

- Why did you come to this session?
- What are 1 or 2 things you are hoping to take away?



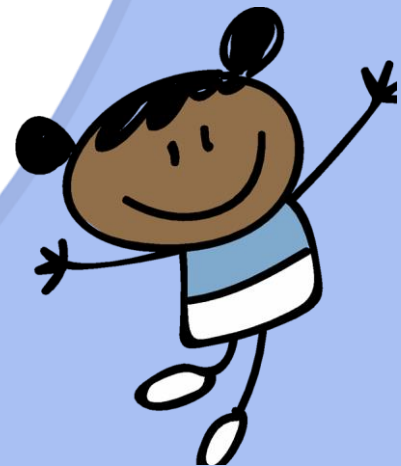
Quality Preschool Initiative San Diego County

Gloria Corral
First 5 San Diego



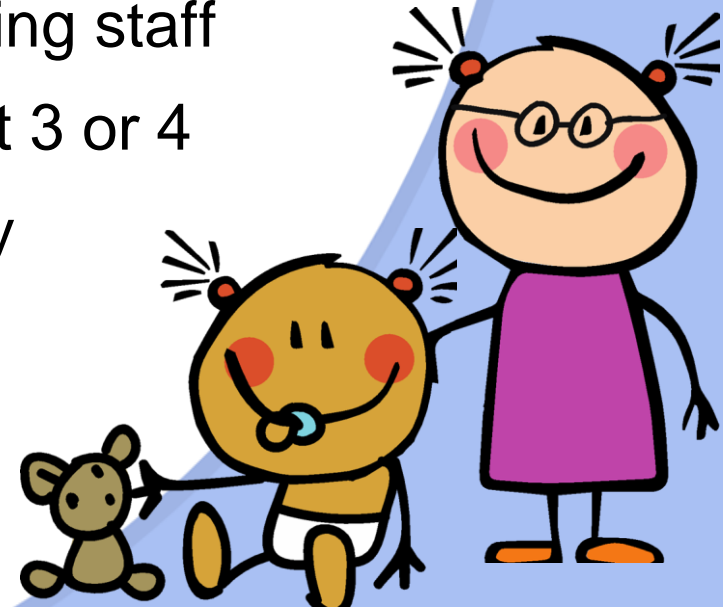
Overview

- Existing QRIS system developed over 12 years
- Focus on 4-year-olds
- Gaps: FCC and Infant/Toddlers
- Building cross-system supports for families
- Quality in every setting for all children



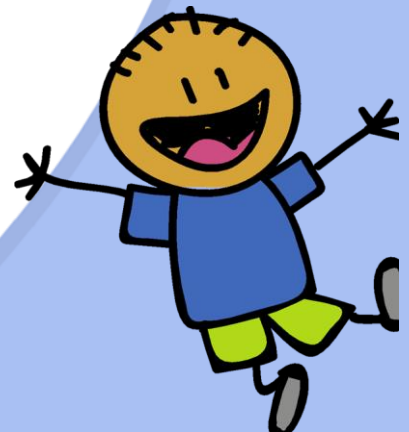
Early Learning Settings

- Home Visiting (prenatal-three)
- Existing capacity and resource: Resource and Referral Agency
- Capacity building with Home Visiting staff
- Transition to “traditional” setting at 3 or 4
- Educating of families about quality



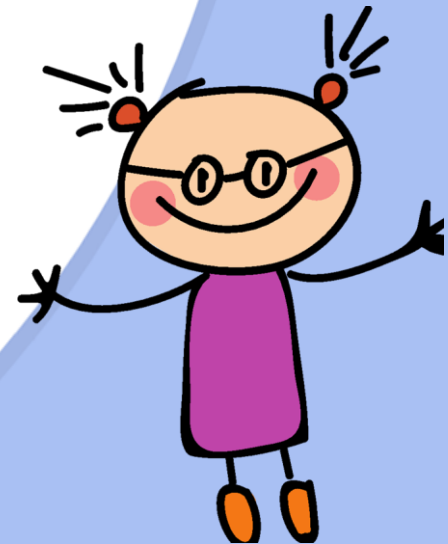
What's working?

- Strengthening collaboration between agencies
- Language and cultural responsiveness
- Improving self-efficacy of families



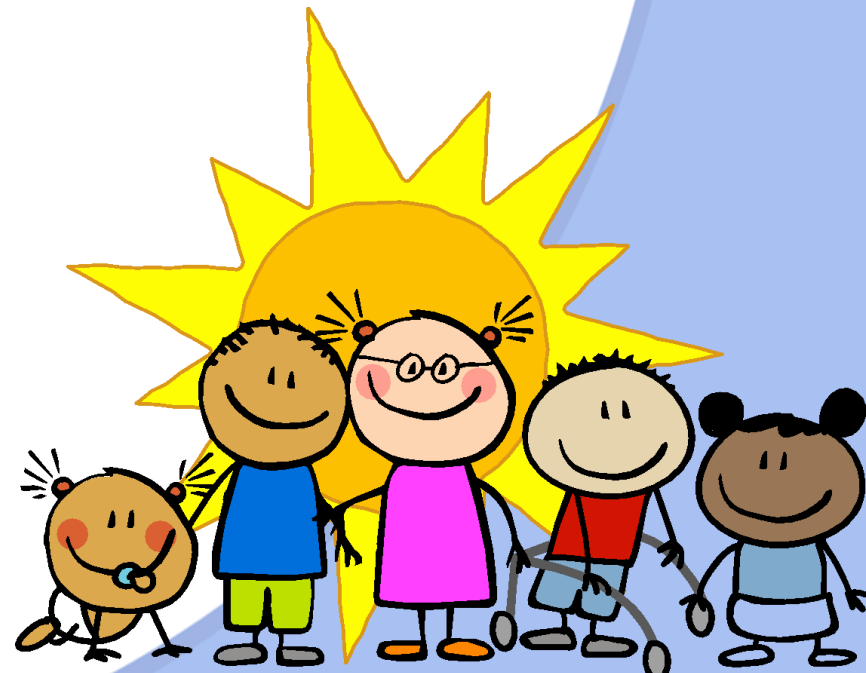
Lessons Learned

- Existing resources open to collaboration
- Building on agency/partner strengths
- Testing and refining through feedback



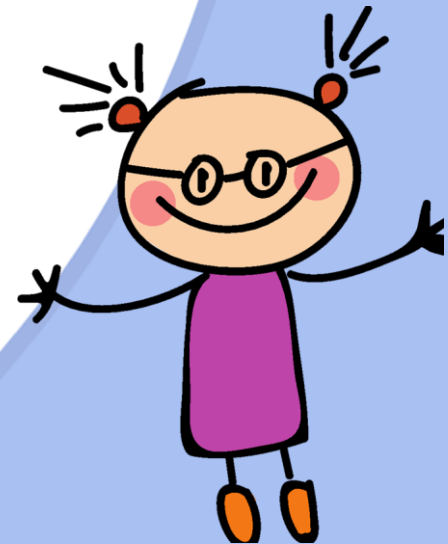
Quality Counts Alameda County

Malia Ramler
First 5 Alameda



Alameda Quality Counts Overview

- County level QRIS began with Race to the Top-Early Learning Challenge Grant in 2011
- Leadership Collaborative - F5, ACOE, LPC
- Approximately 250 programs participating sites - all auspices
- Saturation varies by auspice



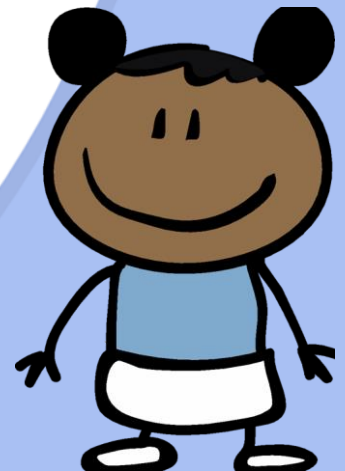
Including FFN: Natural Partners

Libraries

- High family and FFN usage prior to kindergarten
- Located in underserved neighborhoods
- Capacity to provide school readiness activities

Alternative Payment Agencies

- Connection to
 - Low income parents receiving child care subsidies through DSS and CDE
 - FFN receiving child care payments



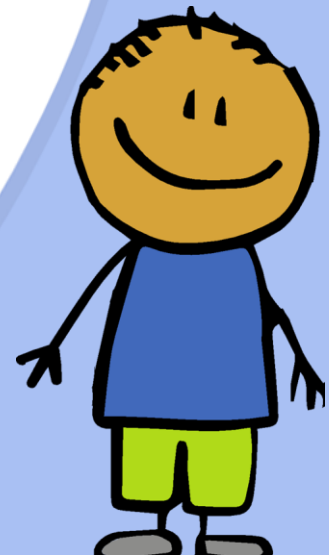
Libraries

Service Model

- Story times with play
- Classroom in a Backpack
- Capacity building for children's librarians

What's Working

- Circulating SR activities in home settings
- Library staff - familiar with curriculum standards



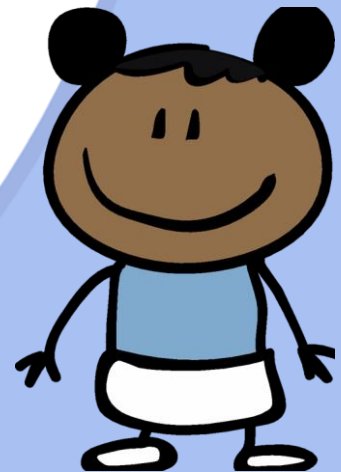
Alternative Payment Agencies

Service Model

- Play and Learn groups
- Trainings
- Outreach activities

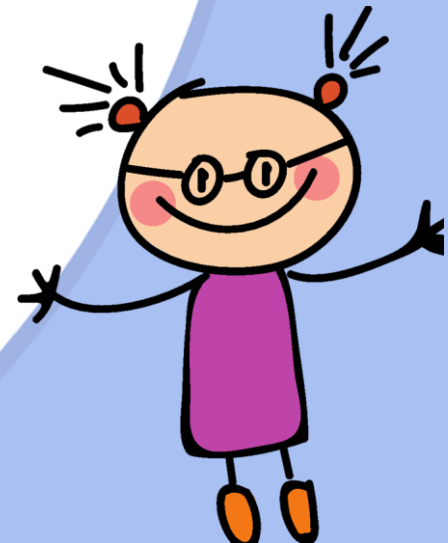
What's Working

- Reaching FFN in priority neighborhoods
- Using what they learn
- Peer support - grandparents
- Integration - Bingo!



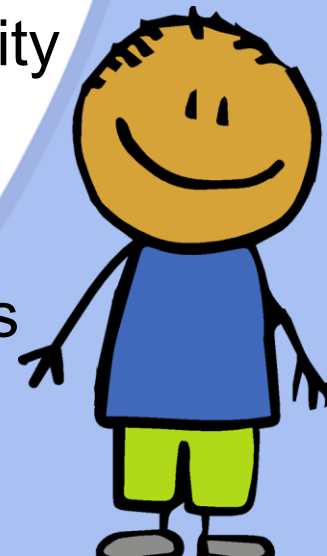
Decision Making Framework

- What is your “North Star?” What does your QRIS dream of achieving, and what values guide how you get there?
- Drivers of decision making - hard choices required:
 - Equity
 - Pragmatic opportunity



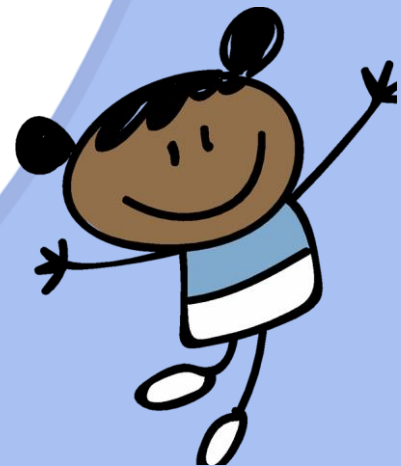
Quality Preschool Initiative San Diego

- Goal to increase quality early learning for children
- Alignment to strategic plan
- Alignment of funding to system-building
- Finding “opportunity” to address equity/inequality
- Non-traditional partners to support high needs families
- Leveraging investment in other “sectors” efforts
- Long-range view - impacting families early



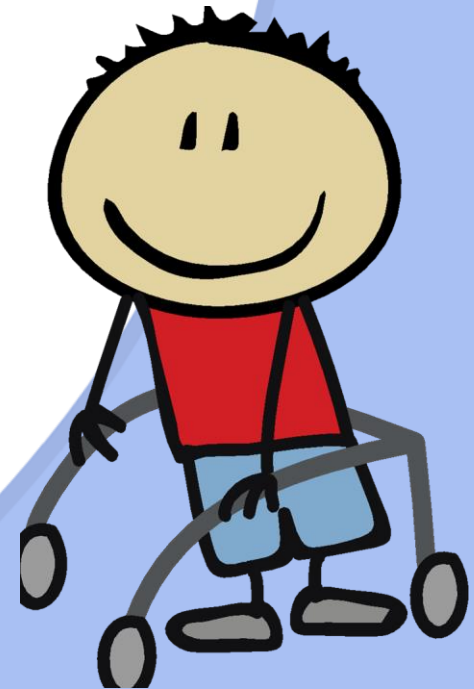
Quality Counts North Star

- Children are ready for kindergarten and can later achieve success in the third grade
- Theory of Change - ECE Quality AND School Readiness Experiences in the Community AND Social Determinants
- Go where the children are



Equity of Outcome

- Community voice - QC is for all children, all providers
- Who has a seat at the table and who does not?
 - children
 - caregivers
- What will it take to “turn the curve”



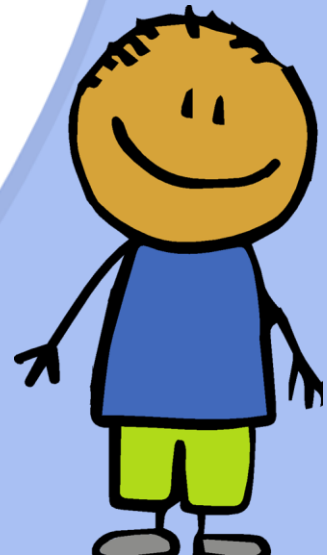
Pragmatism and Opportunity

- Families, Friends, and Neighbors
 - Utilize Existing Relationships
- Neighborhood Partnership
 - Build on previous investments
- Local Policy Change
 - Leverage change to drive innovation



Small Group Exercise

1. What is your QRIS' "North Star?"
2. Using an equity lens, what children and/or providers are currently being supported, and who is missing? What data would you need to answer this question?
3. What existing relationships or investments can be leveraged?
4. What will you take home to your system as an idea for reflection and innovation?



Thank You!

Any Questions?

Please visit our new website for more information!

www.qualitycountsca.net



In partnership with:

