



NATIONAL CENTER ON

Parent, Family and Community Engagement

424. Integrating Family Engagement into Early Childhood Systems: Lessons from States and Tribes

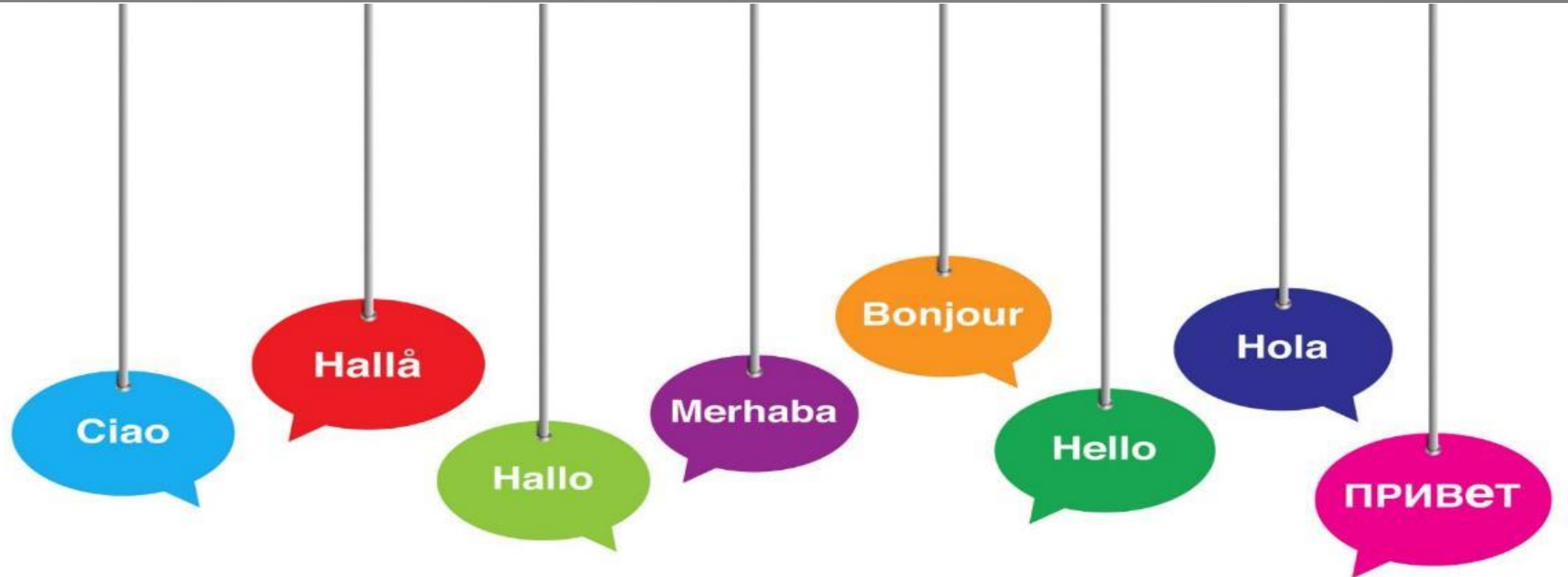
Anna Lovejoy & Chrissie Castro, NCPFCE

Beth Barrett, Indiana Office of Early Childhood and Out of School Learning

July 16, 2018



Welcome & Introductions



Learning Objectives

- Learn about the PFCE for EC Systems Framework & implementation resources
- Understand how the Framework is informing policy and systems change in Indiana and Tribal early childhood systems
- Discuss opportunities for systemic integration of PFCE in your states to improve outcomes for children and families

Agenda

15 min Introductions & Overview

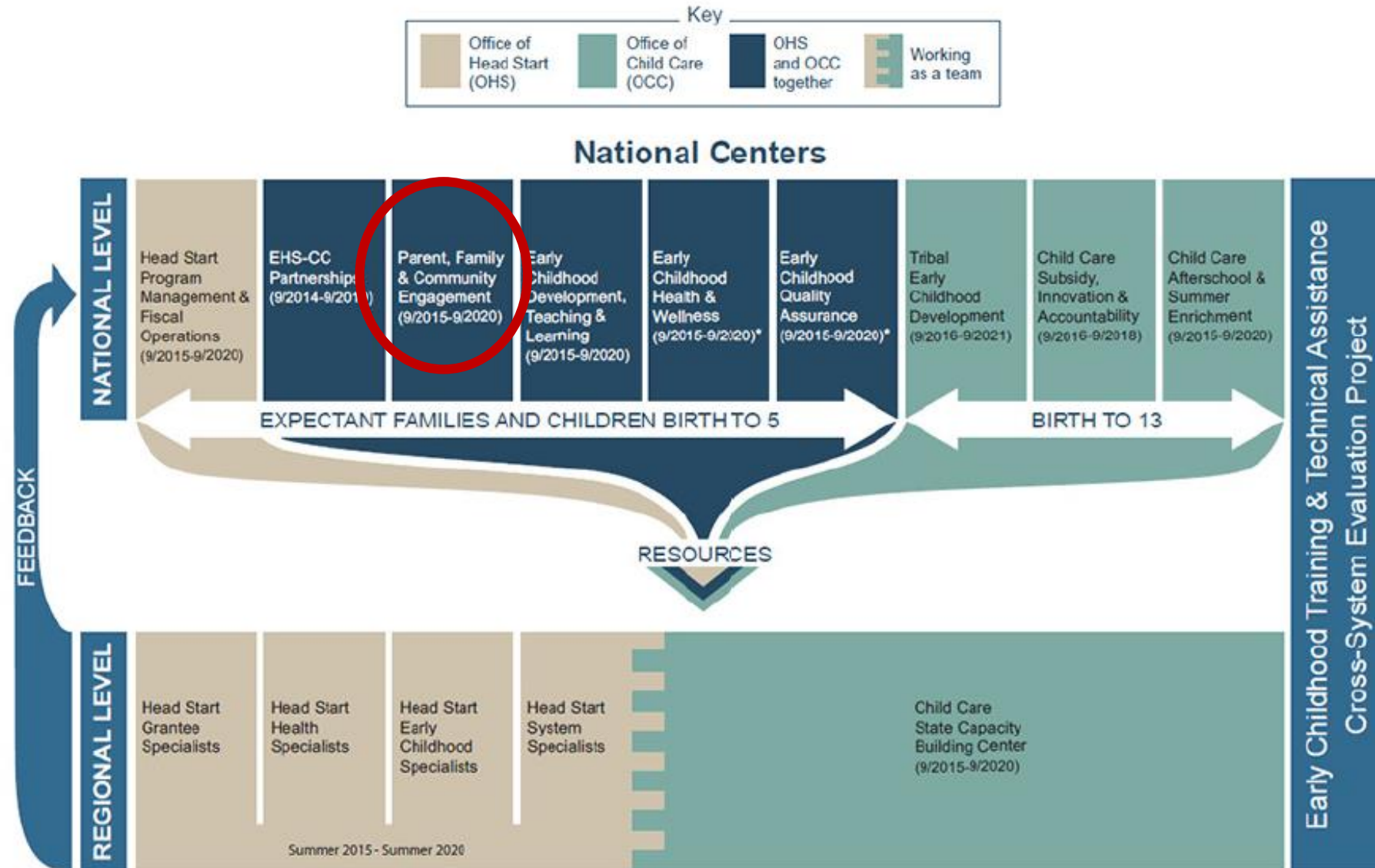
30 min *Application of the Framework: What it Looks Like in Indiana*

10 min The View from Tribes

25 min Break-out Conversations: Family Engagement and Equity

10 min Report Out / Q&A

Administration for Children and Families Early Childhood Training & Technical Assistance System



NCPFCE and the EC T/TA System



Peer Learning Communities on Family Engagement

Arizona

Arkansas

Colorado

Georgia

Florida

Indiana

Maryland

Michigan

North Carolina

Ohio

Oklahoma

Oregon

South Carolina

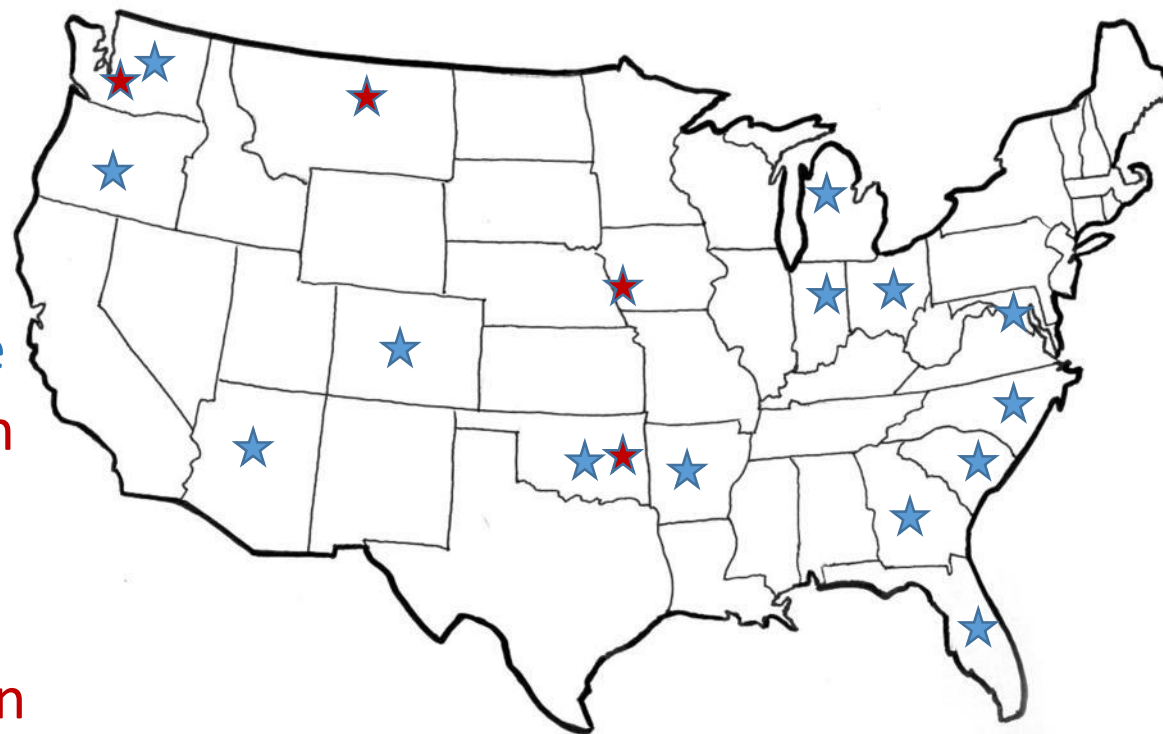
Washington State

Ft. Belknap Indian
Community

Ponca Tribe of
Nebraska

Wyandotte Nation

Yakama Nation





What is Family Engagement?



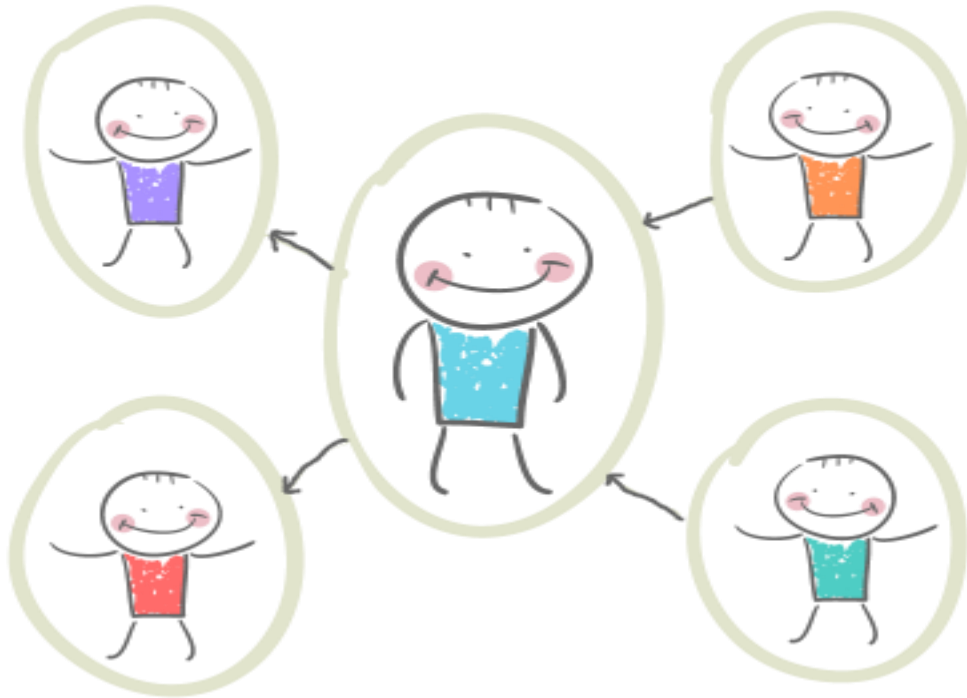
NATIONAL CENTER ON

Parent, Family and Community Engagement



One-way and two-way interactions

Parent Involvement



Family Engagement



BOTH MATTER!

When we actively engage with each other and families...



...all benefit.



The Parent, Family and Community Engagement Framework for Early Childhood Systems

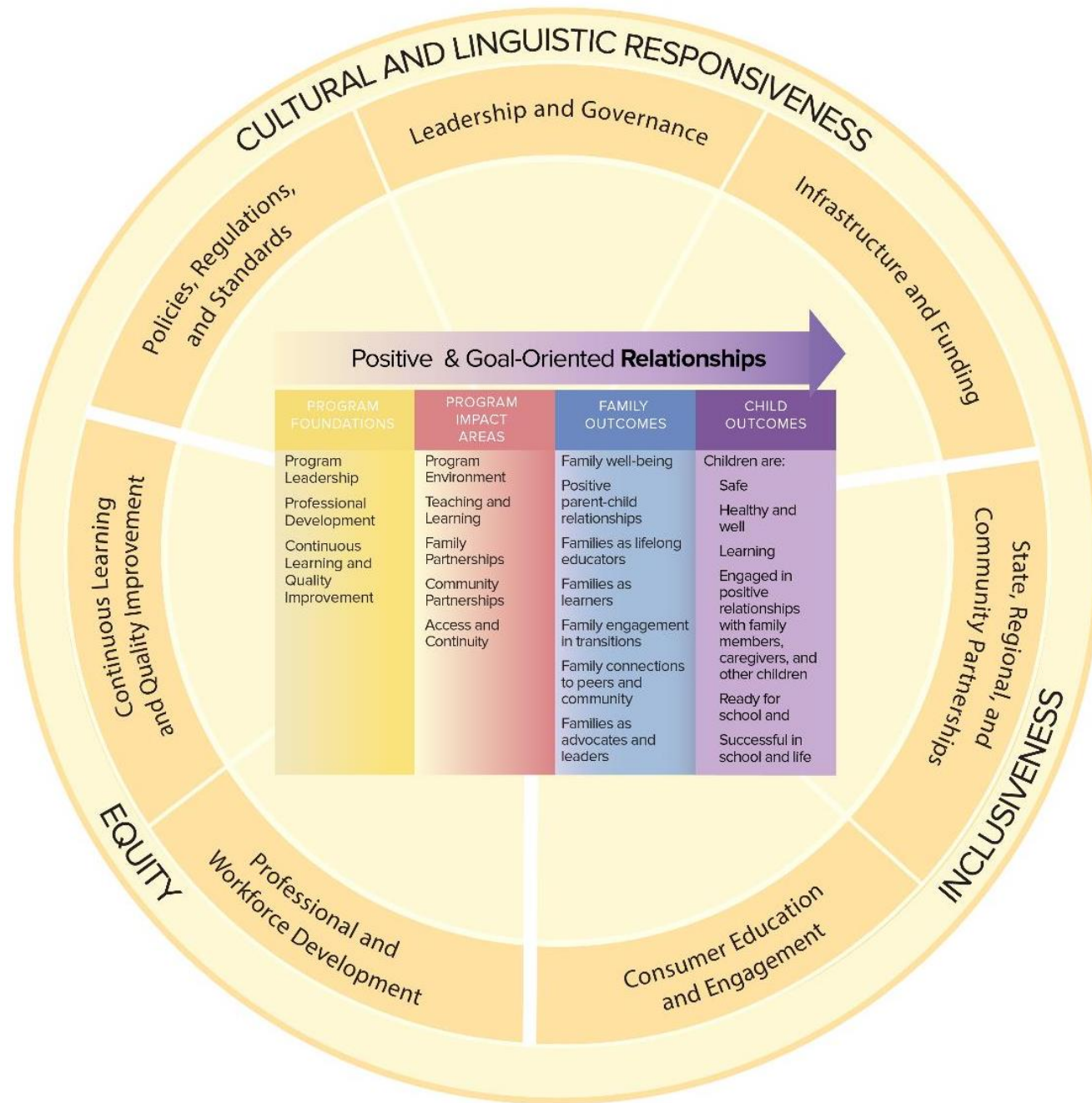


NATIONAL CENTER ON

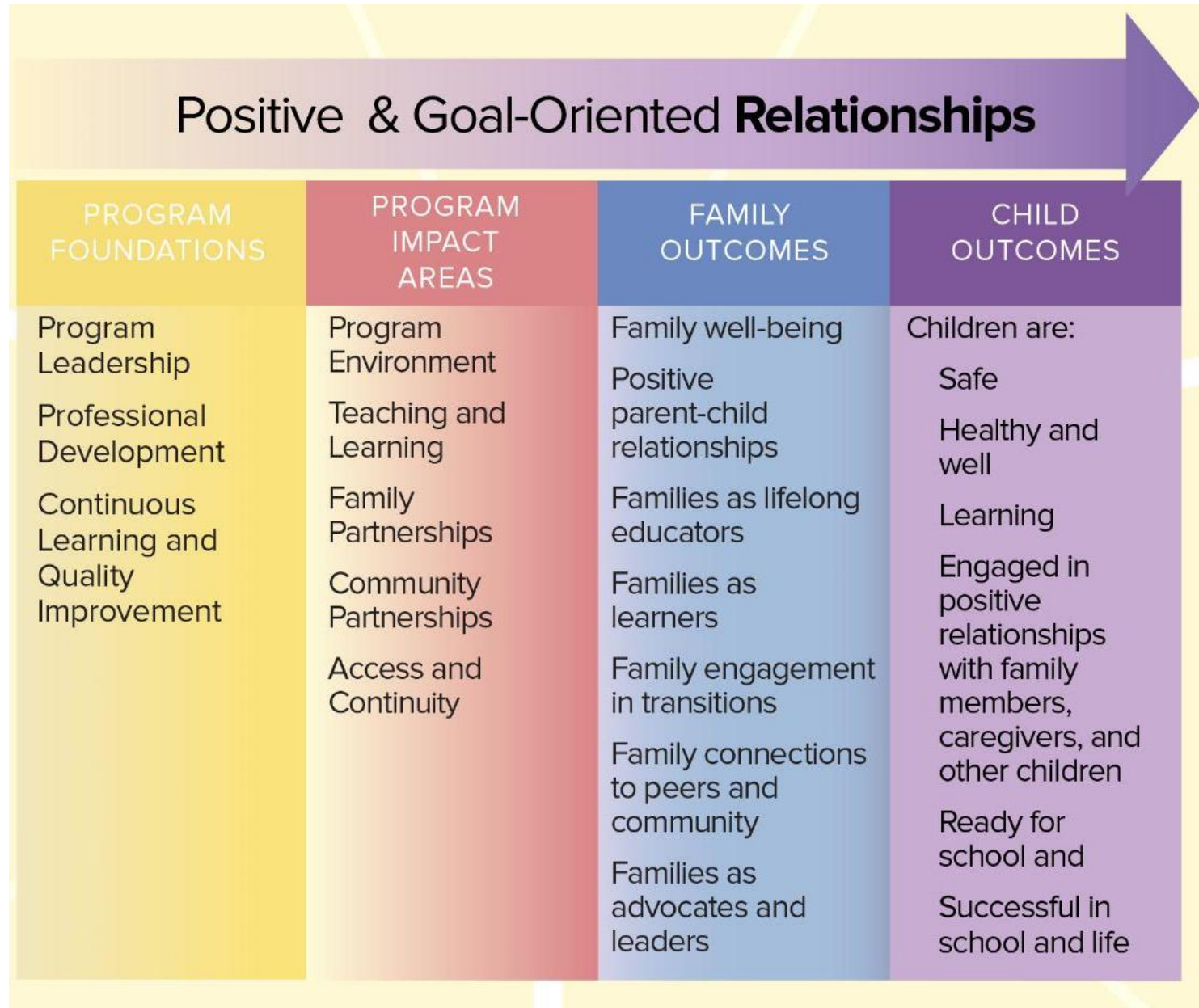
Parent, Family and Community Engagement

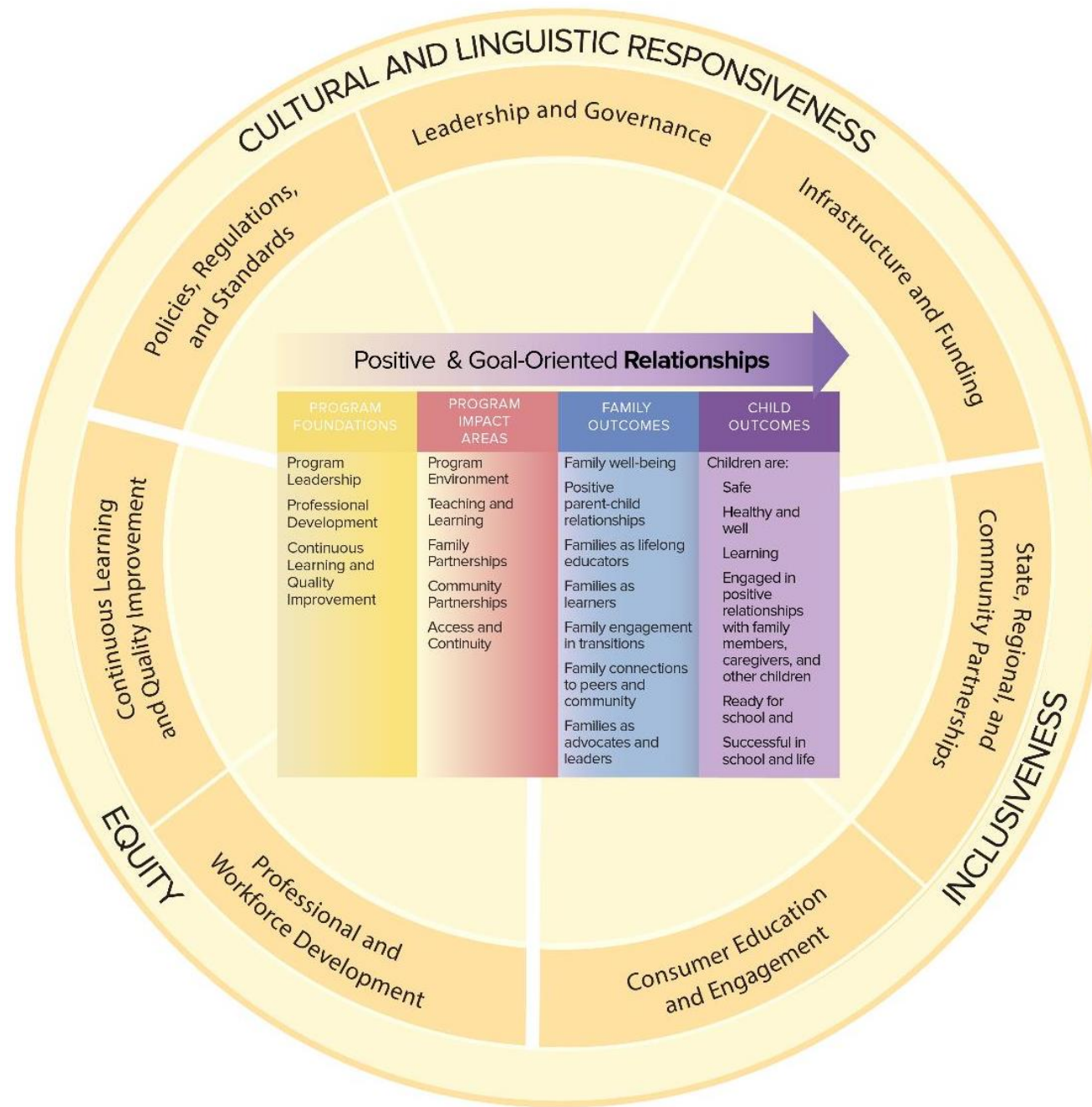


Now Available on CCTA (CCTAN)!
<https://childcareta.acf.hhs.gov/resource/parent-family-and-community-engagement-framework-early-childhood-systems>



Program Level Framework







Application of the Framework: What it looks like in Indiana



NATIONAL CENTER ON

Parent, Family and Community Engagement





State Example: INDIANA

Peer Learning Community On Family
Engagement Experiences

Leadership & Governance



- ELAC Family Engagement Workgroup consisting of 29 volunteers statewide created a definition, framework and self-assessment for programs
- Indiana has concrete family engagement strategies which are codified by legislation for pre-K pilot program



Infrastructure & Funding



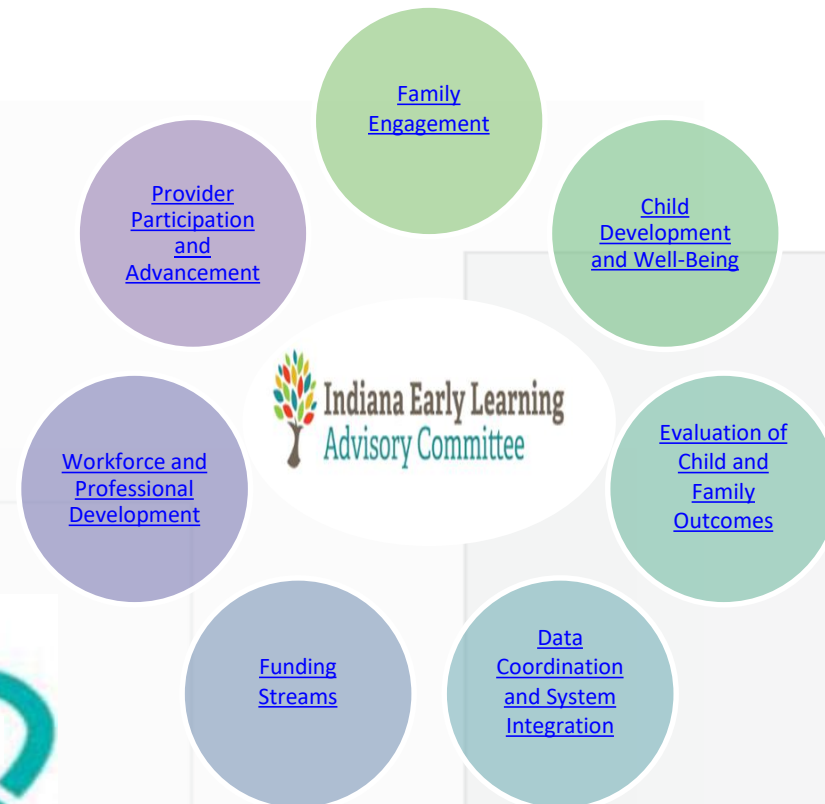
- EEMG/AmeriCorp Program
- Requirement to complete self-assessment in provider agreement for pre-K pilot programs
- ELI FE Prize completion
- Capacity Building Grants



State, Regional & Community Partnerships



- State interagency work increasing
- ELAC/workgroups
- ECCS Impact grant
- Coalition Building Efforts
- Help Me Grow Pilot



Consumer Education & Engagement



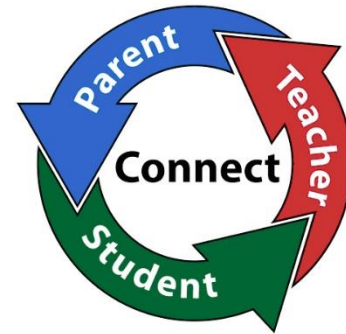
- Care Finder Website enhancements
- Brighter Futures Call Center
- Brighter Futures Parent Website
- Working with DOE on ESSA focus on transitions and family engagement



Professional & Workforce Development



- Included in Indiana Core Knowledge and Competencies for Early Childhood, School Age and Youth Professionals - revised 2016
- Coaching support for programs to complete from self-assessment
- Working on a leveled training/trainer approach



goals

em

Continuous Learning & Quality Improvement



- Raising awareness
- Piloting assessment of practices with pre-K pilot
- Grants and incentives to reward quality
- Self-Assessment toolkit leveled to encourage leveled improvements

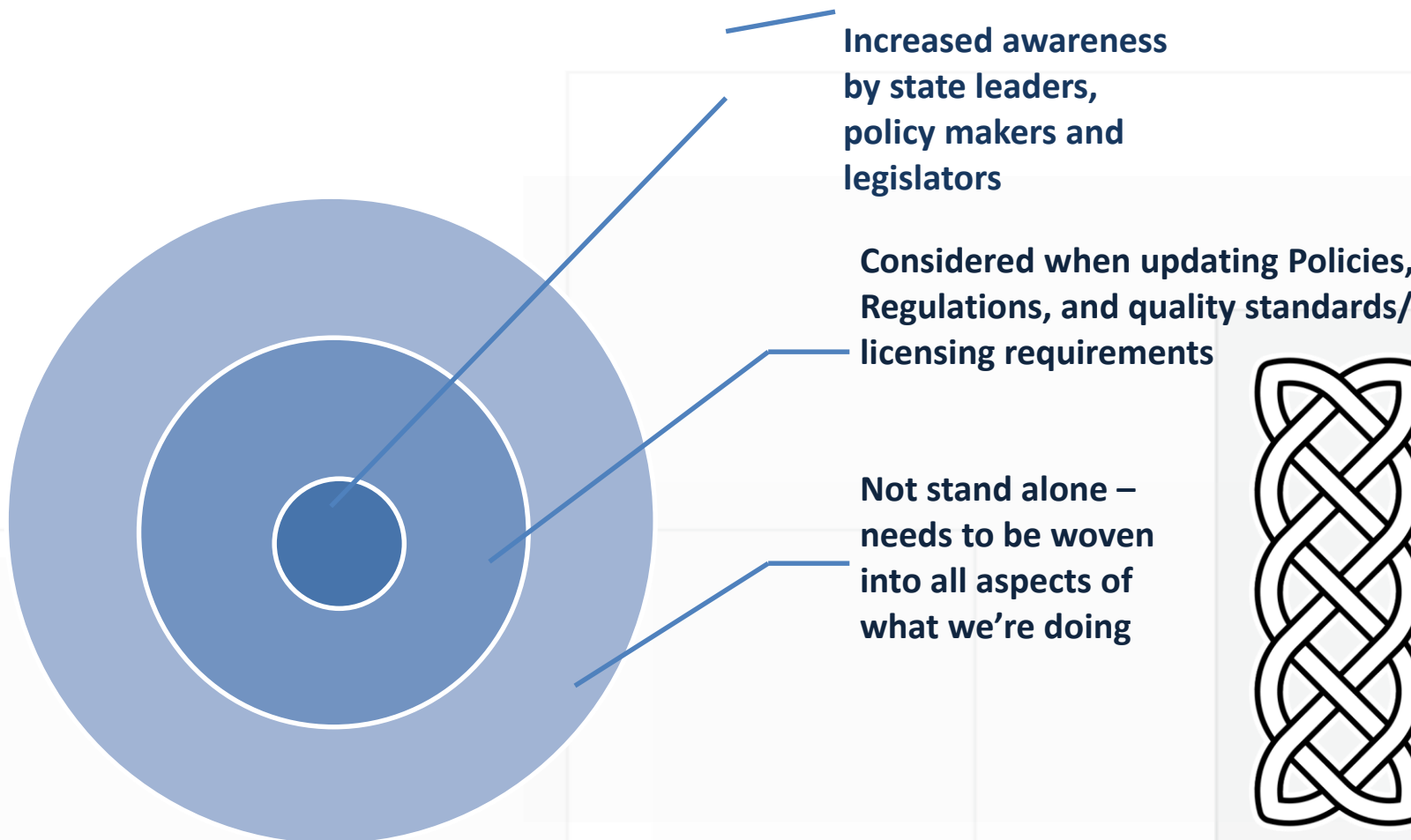
Entering

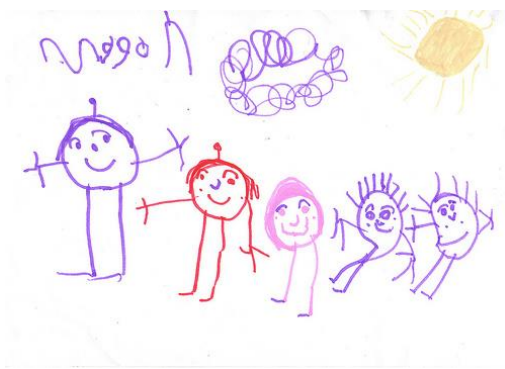
Emerging

Progressing

Excelling

Policies, Regulations & Standards





Links and Resources



- Indiana Family Engagement Toolkit

<http://www.elacindiana.org/elacindiana/wp-content/uploads/2016/01/Family-Engagement-Toolkit-1.pdf>

- Brighter Futures Indiana Website

<http://brighterfuturesindiana.org/>

- Indiana Core Knowledge and Competencies for Early Childhood, School Age and Youth Professionals

http://inpdn.org/wp-content/uploads/2016/04/2016_INCKC.pdf



The View from Tribes



NATIONAL CENTER ON

Parent, Family and Community Engagement





Breakout Conversations



NATIONAL CENTER ON

Parent, Family and Community Engagement





Report Out / Q&A

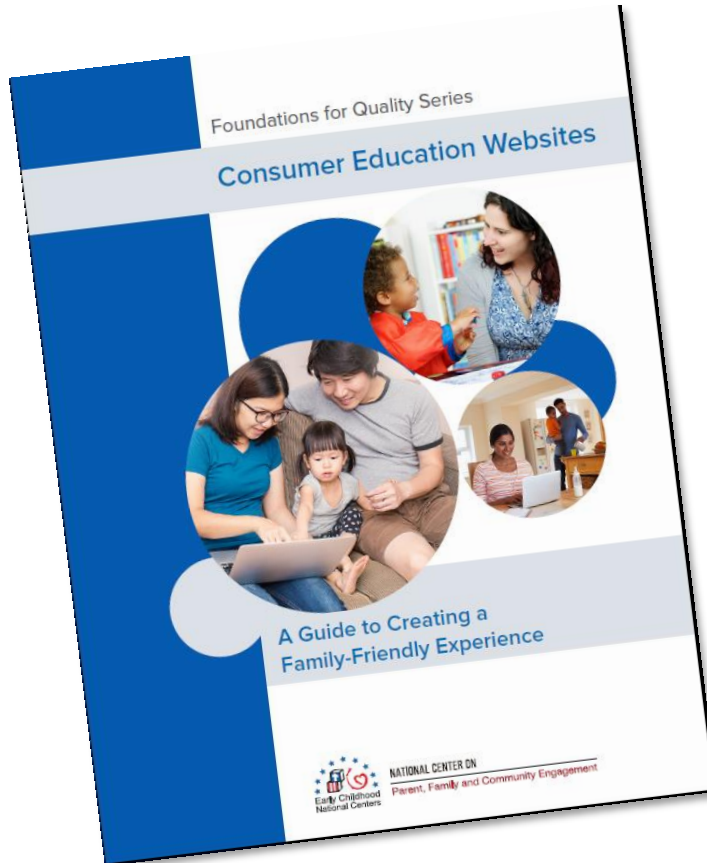


NATIONAL CENTER ON

Parent, Family and Community Engagement



Resources for Implementation: Consumer Ed

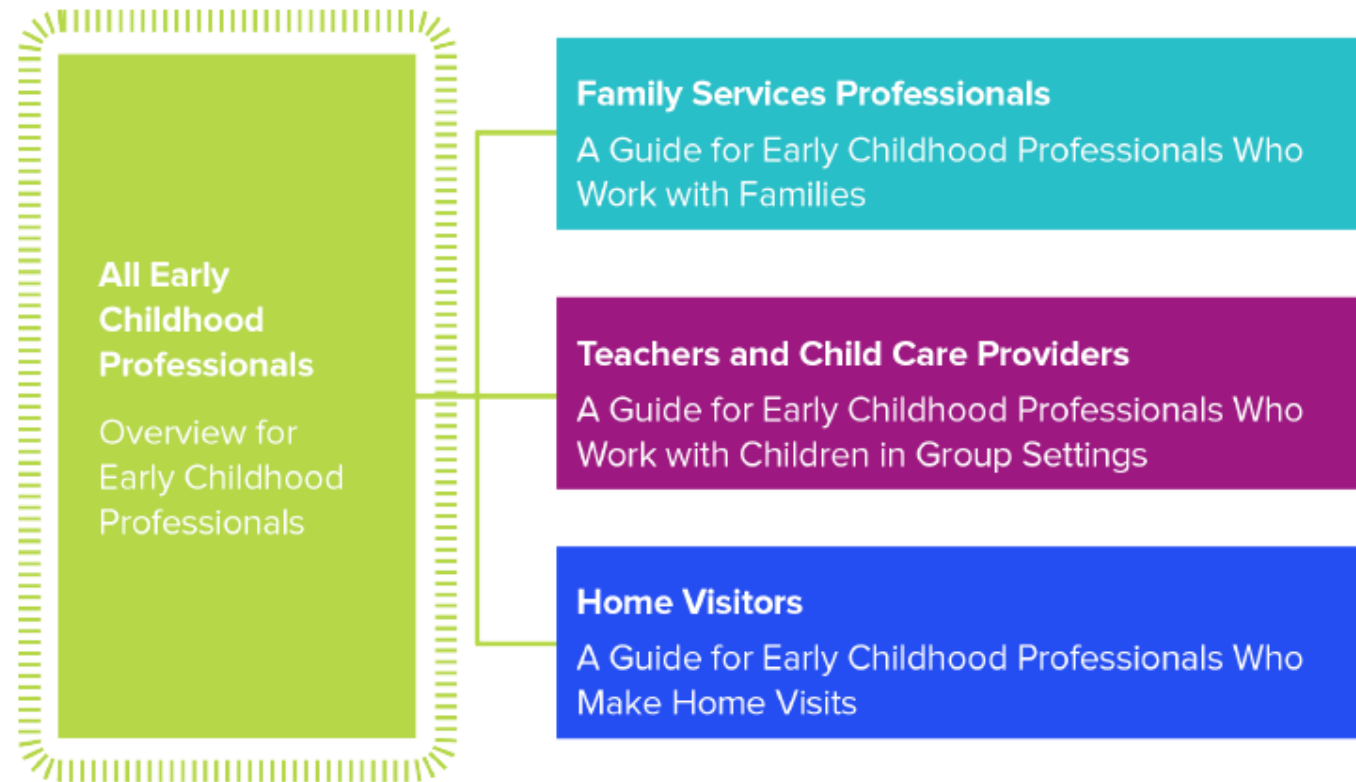


- Consumer Education: Guide to Creating a Family Friendly Website (NCPFCE)
- Consumer Education Website: Self-Assessment Checklist (SCBC)
- School-age Consumer Education Toolkit (NCASE)

Now Available on CCTA (CCTAN)!

<https://childcareta.acf.hhs.gov/>

Resources for Implementation: Competencies



Coming soon to CCTA (CCTAN)!

<https://childcareta.acf.hhs.gov/>



Resources for Implementation: Indicators

- Key Indicators of High Quality Family Engagement for Quality Rating and Improvement Systems



Coming soon to CCTA (CCTAN)!

<https://childcareta.acf.hhs.gov/>



NATIONAL CENTER ON

Parent, Family and Community Engagement

For more information, please contact us:

PCFE@ecetta.info | 1-866-763-6481

