

State-Local Team Approaches to Prenatal-to-Three Services

March 26, 2020

NCIT Capacity-Building Hub





**Karen Ponder, Distinguished Fellow, Special
Projects
BUILD Initiative**

Webinar Overview and Learning Objectives

State and community leaders will:

- ✓ Consider new ways to work together with the goal of advancing PN-3 services for infants, toddlers, and their parents.
- ✓ Think about ways to deepen state-local connections that may already exist for a well-coordinated PN-3 statewide policy agenda.
- ✓ Learn how actual robust local-state partnerships underway are working to achieve PN-3 goals and dismantle inequities for children and families.

Why Prioritize Prenatal-to-Three Services?

- The earliest years are critical for lifelong social and emotional health and lifelong learning
- Services and programs for our youngest children are the hardest to deliver and the most underfunded



Andrea Payne
Prenatal to Five Advocacy Manager
TexProtects



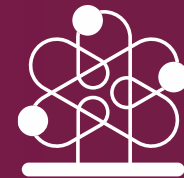
Michelle Larva
Project Manager
Early Learning Alliance (Tarrant County)



Audrey Young
Child and Adolescent Health Branch Manager & Title V
Children with Special Health Care Needs (CSHCN)
Director, Maternal and Child Unit
Department of State Health Services (Texas)

Featured Webinar Presenters

NCIT Capacity-Building Hub



**National
Collaborative
for Infants
& Toddlers™**

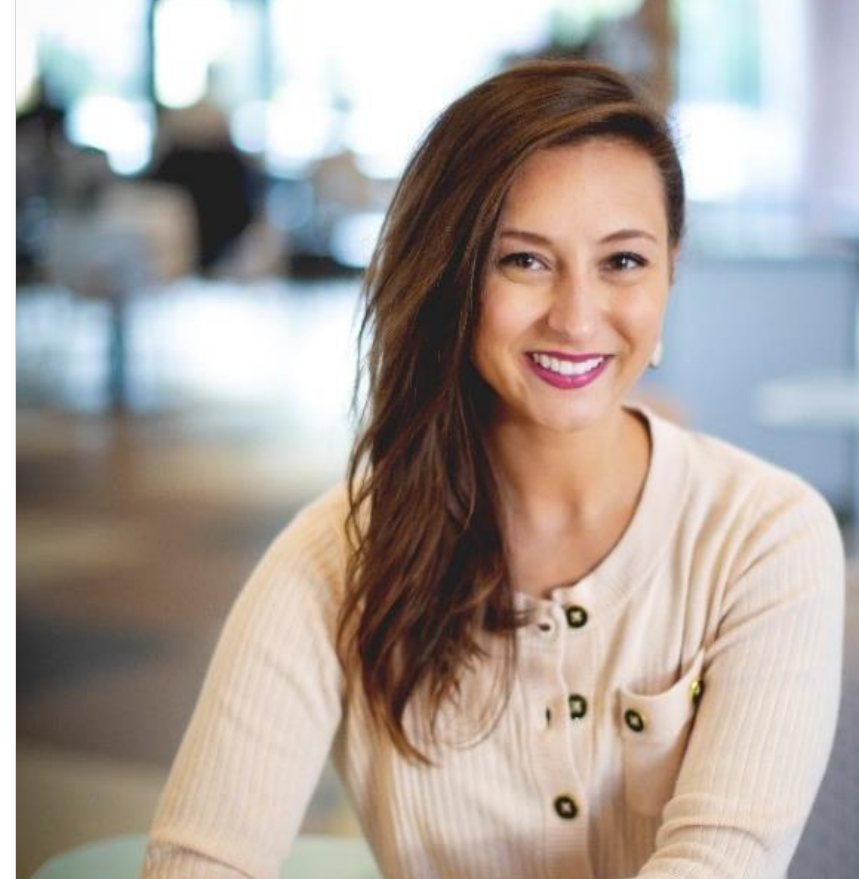
Powered by the Pritzker Children's Initiative



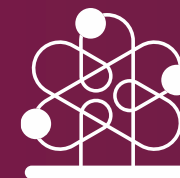
Matt Gillard
President and CEO of Michigan's Children and
Co-Chair of Michigan's Statewide Prenatal-to-
Three Policy Initiative



Anissa Eddie
Pritzker Fellow for Early Childhood
KConnect and First Steps Kent



Alexa Kramer
Director of Government Affairs
Grand Rapids Chamber of Commerce
(Grand Rapids, Michigan)



**National
Collaborative
for Infants
& Toddlers™**

Powered by the Pritzker Children's Initiative

Featured Webinar Presenters

NCIT Capacity-Building Hub

State and Local Spotlights | Texas

NCIT Capacity-Building Hub

Presenter:
Andrea Payne, TexProtects

NCIT Capacity-Building Hub

Texas Facts

- Approx. 1.2 million infants and toddlers under 3
- 47% of children ages 0-8 are below 200% FPL
- Early Childhood is spread across 6 state agencies and non-agency offices:
 - Texas Education Association
 - Health and Human Services Commission
 - Texas Workforce Commission
 - Department of Family and Protective Services
 - Department of State Health Services
 - Texas Head Start State Collaboration Office



https://en.wikipedia.org/wiki/List_of_cities_in_Texas#/media/File:Texas_in_United_States.svg

Texas: State-Local Structure

- Texas is BIG:
 - 254 counties
 - 1,214 municipalities (352 of which are home rule)
- State agencies divide the state into regions
 - Not all agencies use the same ones
 - State agencies contract with community-based organizations to deliver programs and services

Texas Prenatal to Three (PN-3) Collaborative

- Umbrella group for PN-3 stakeholders to come together, discuss policy priorities, and develop a strategic agenda
- 110+ organizations, 6 state agencies/offices, 7 cities + 3 counties
- Community perspective, buy-in, and alignment are critical to state plan

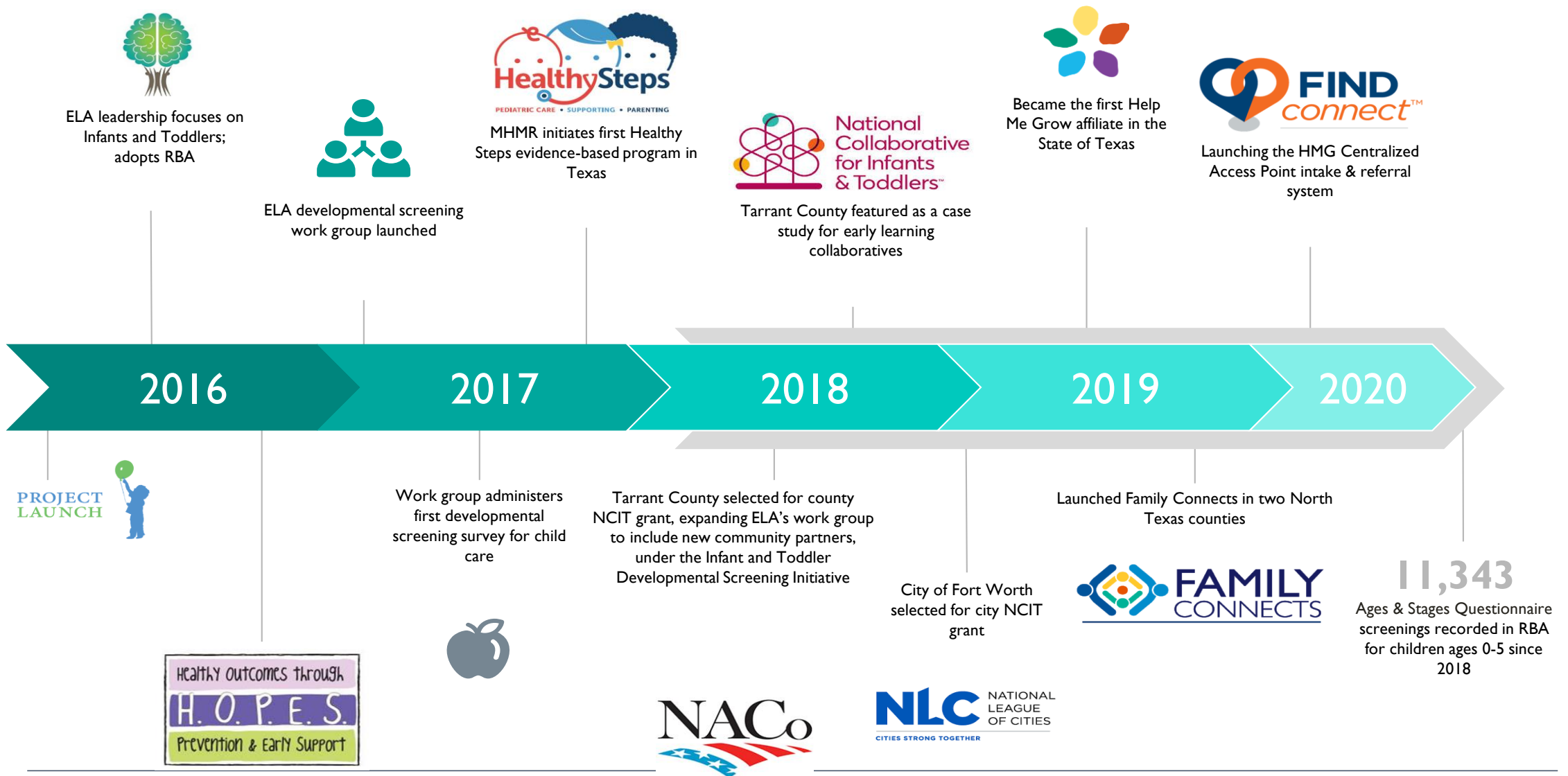
Presenter:
Michelle Larva, Early Learning Alliance in Tarrant County

Tarrant County/Fort Worth

Local Pritzker Community made up of city and county leads:

- MHMR Tarrant County
- Early Learning Alliance
- Tarrant County Public Health Department
- City of Fort Worth Libraries

Timeline



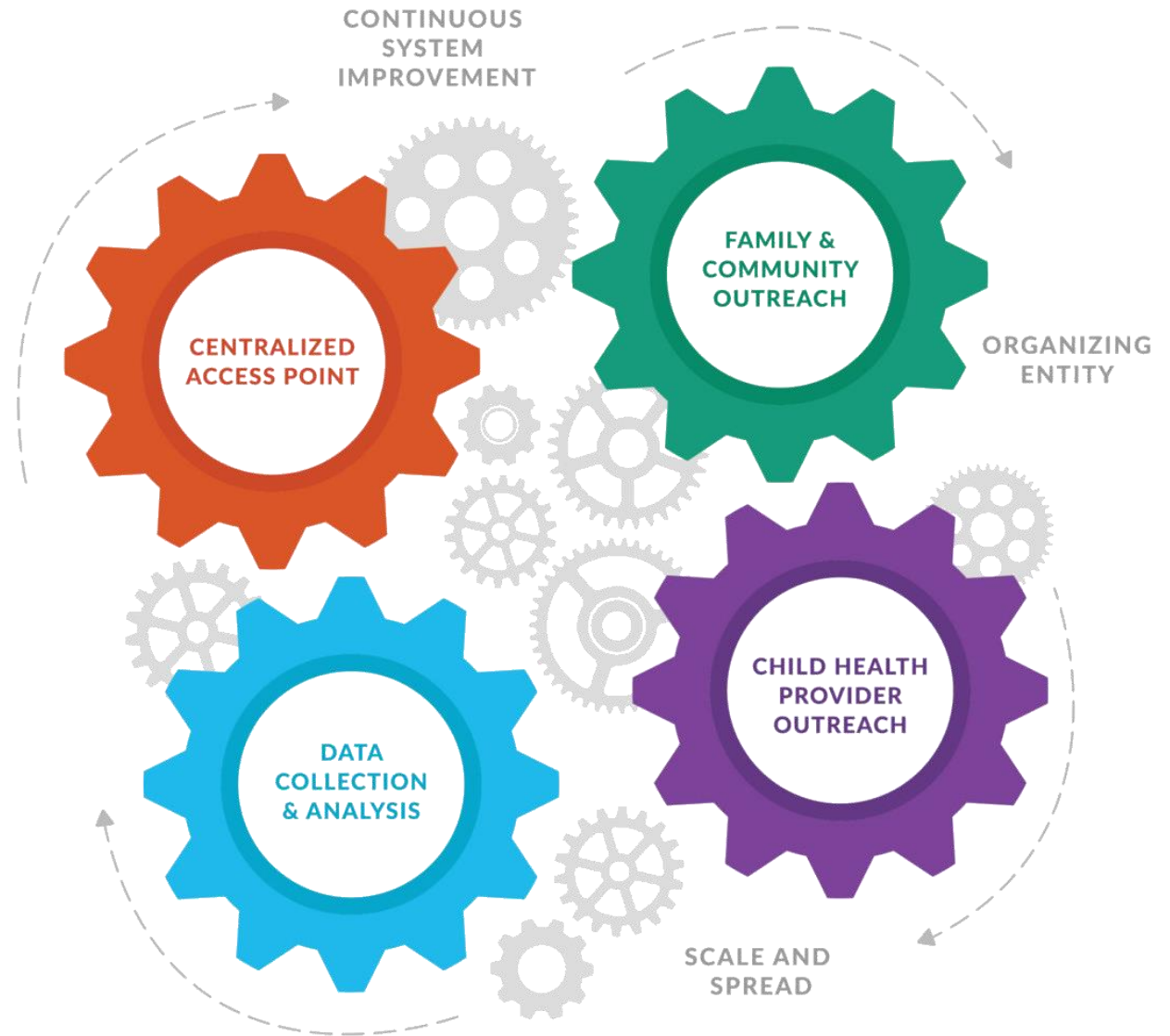
Tarrant County as a *Demonstration Site*

To ensure effectiveness and sustainability, local system-building benefits from state buy-in / support.

In Texas, this often happens “from the bottom, up.”

Tarrant County will identify:

- What could this look like in Texas?
- What systems can we utilize?
- How could a community/region in Texas build this out?



Presenter:

**Audrey Young, Child and Adolescent Health Branch Manager & Title V
Children with Special Health Care Needs (CSHCN) Director, Maternal and
Child Unit, Department of State Health Services (Texas)**

Project Launch- SAMHSA Grant

- A national initiative to promote the wellness of young children from birth to 8 years of age by addressing the physical, social, emotional, cognitive, and behavioral aspects of their development.
- MHMR of Tarrant County was a Project Launch Expansion Site
 - First to use the Help Me Grow model
 - Saw increase in developmental screenings and families connected to providers
 - Families reports positive experiences with locating their child's care
- Concluded in August 2019
- DSHS looked to continue and expand the work



Texas Department of State
Health Services

Help Me Grow Organizing Entity

- In late 2019, HMG National approached Texas with an opportunity to support the creation of a state organizing entity and 5 additional communities.
- In 2020, DSHS became the central hub for the framework in Texas as this work aligns with DSHS' effort to support family-centered health care systems.
- In this role, DSHS will lead implementation strategies, quality improvement, communication, and community engagement.



Texas Department of State
Health Services

Help Me Grow Organizing Entity

Core functions include:

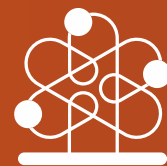
- Engage formally with Help Me Grow National Center
- Design & support a leadership team
- Connect localities with technical assistance
- Message the unique value proposition of Help Me Grow
- Identification of funding streams
- Statewide expansion



Texas Department of State
Health Services

State and Local Spotlights | Michigan

NCIT Capacity-Building Hub



National
Collaborative
for Infants
& Toddlers™

Powered by the Pritzker Children's Initiative

Presenter:

Matt Gillard, President and CEO of Michigan's Children and Co-Chair of Michigan's Statewide Prenatal-to-Three Policy Initiative

Michigan Facts

- There are 688,553 children 0 to 5
- 50% of children in Michigan are eligible for free or reduced lunch
- 43% of children are eligible for Medicaid
- Michigan's Depart of Education houses the Office of Great Start which coordinates Michigan's early childhood investments from prenatal to 3rd Grade



Michigan's Early Childhood Advocacy

- History of success
- Strong state-wide organizations
- Local partners engaged and knowledgeable
- Everyone committed to being opportunistic
- Business community engaged and enlightened

Michigan's Child Care Subsidy System

- Eligibility currently at 130% FPL
- Recent investments focused on payment rates and provider supports
- Michigan's Quality Rating and Improvement System (QRIS)
- Michigan's Prenatal to 3 coalition recently developed a statewide early childhood policy agenda.
- Policy needs related to child care are elevated in the statewide policy agenda

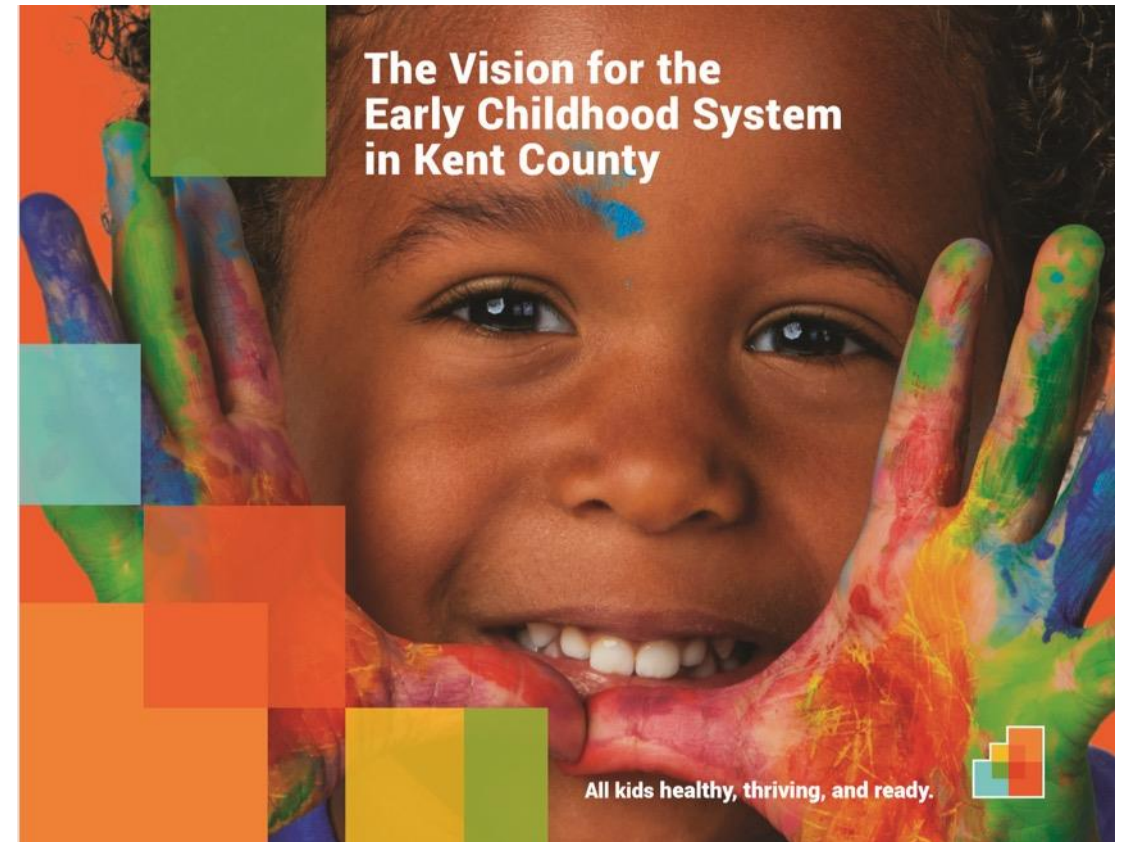
Presenter:

Anissa Eddie, Pritzker Fellow for Early Childhood, KConnects and First Steps Kent



Pritzker Fellow Role

- Fourteen Fellows across the country
- Develop and drive implementation of an ambitious prenatal to age 3 agenda
- Connect local early childhood work to broader work at both the state and national level
- Child Care was identified as one of the target areas of focus



Child Care Needs

- Michigan's unemployment rate has been very low
- The majority of Michigan Families need child care with two out of three children living in homes where their parents work
- Like many places, child care in Michigan is extremely expensive and most places do not have enough affordable, high-quality slots to meet the need
- Child care is vital to enabling workforce participation and creating same, nurturing early learning environments that support the development of children in their early years when brain development is most rapid

Connection State and Local Work

- As a Pritzker Fellow, I have made both local and state connections to work towards child care solutions
 - Kent County Prenatal to 3rd Grade Workgroup
 - Kent County Great Start to Quality Advisory
 - Kent County Shared Services Alliance
 - Talent 2025 (Regional) Early Childhood Working Group
 - State of Michigan Shared Services Advisory
 - State of Michigan Prenatal to Three Coalition Steering Committee
- The Tri-Share Pilot is an example of state and local collaboration

Presenter:

Alexa Kramer, Director of Government Affairs at the Grand Rapids Chamber of Commerce, Grand Rapids, Michigan



Pilot overview

- Recognize child care as an early education and workforce development issue
- The Chamber's "why"
- Purpose of Coalition:
 - Affordability, that leads to quality
 - Workforce development
 - Increase labor market
 - Impact poverty cycles and provide a path to prosperity
 - Garner business community support
- Tri share model- splitting cost between business, family and government (state and federal dollars)
 - Business, family, provider, state, and facilitator hub
- 3 pilots- urban, suburban and rural

Boiler Plate Language

Facilitator Hub	<p>Necessary to apply for pilot</p> <p>Main role(s): provide administrative and regulatory support, liaison between business and provider, determine supply and demand, fiduciary</p>
Business	<p>Voluntary</p> <p>Expands eligibility for their workforce</p> <p>Talent attraction and retention</p>
Provider	<p>Works with Facilitator Hub to communicate availability</p> <p>Have regulatory and administrative burdens lifted</p>
Family	<p>Has a major barrier for workforce development removed</p> <p>Has a guaranteed spot for their child</p>

Pilot Timeline and Next Steps

- Timeline
 - Work with Legislative Services Bureau (LSB) and Health Fiscal Agency (HFA)
 - Included in Senate and House versions
 - Signed into law
- Immediate Next Steps
 - Continue Outreach Meetings
 - Engage Coalition Members

Q&A Section | Presenters

NCIT Capacity-Building Hub

Q&A Section | Audience

Thank You for joining the webinar!
Have feedback and next steps? Be sure to share
in the post-webinar survey link below.

Presenter Contact Information:

Karen Ponder (Facilitator): kponder@buildinitiative.org

Presenters:

Alexa Kramer: alexa@grandrapids.org

Andrea Payne: andrea@texprotects.org

Anissa Eddie: aeddie@k-connect.org

Audrey Young: audrey.young@dshs.texas.gov

Matt Gillard: matt@michiganschildren.org

Michelle Larva: michelle.larva@earlylearningntx.org

To access the survey, click [here](#).

