

Increasing Access, Quality, and Affordability of Early Care and Education through Systems Building and Change Management

July 25, 2019

Purpose

- Highlight the work of three states focused on making meaningful progress towards implementing a long-term vision for a comprehensive B-5 system
- Begin a conversation with PDG B-5 grantees and CCDF state administrators on ways to troubleshoot common barriers and elevate successes and best practices through peer learning

Agenda

Welcome and Opening Remarks

Connecticut Office of Early Childhood and Third Sector:
Engaging Stakeholders to Establish Sustainable Intra- and Inter-Agency Initiatives

Washington Department of Children, Youth, and Families and BUILD:
Advancing an Integrated, Equitable, and Responsive Early Learning System in Washington

New York State and The Ounce:
Including ALL Parts of the Early Childhood System

Q&A and Closing Remarks

Agenda

Welcome and Opening Remarks

Welcome and Opening Remarks



Shannon Christian

*Director of the Office of Child Care at HHS'
Administration for Children and Families*

Agenda

Welcome and Opening Remarks

Connecticut Office of Early Childhood and Third Sector

Connecticut Office of Early Childhood and Third Sector: *“Engaging Stakeholders to Establish Sustainable Intra- and Inter-Agency Initiatives”*



Beth Bye
Commissioner
Office of Early Childhood



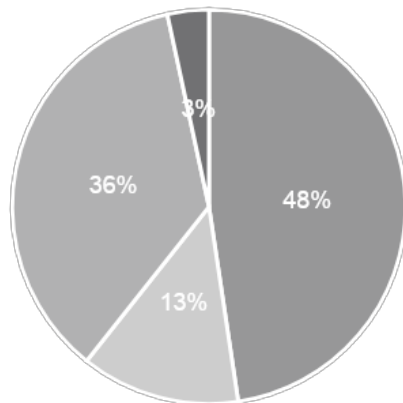
Christine Kang
Manager
Third Sector

Mission

To support all young children in their development by ensuring that early childhood policy, funding, and services strengthen the critical role families, providers, educators, and communities play in a child's life

Early Care and Education Division

Resource Allocation Breakdown



■ CCDF ■ Child Day Care ■ School Readiness ■ Other

Programs and Funding:

- \$350 million annual budget
 - 82% of funding being overseen and monitored by the Early Care and Education (ECE) Division
- Program areas and core functions of ECE include state and federal early childhood grants, contracts, and subsidies

To create a shared vision for early care and education across key stakeholder groups, OEC partnered with Third Sector and hosted statewide Action Sessions



Reviewed and **synthesized** raw feedback collected since 2014



Prioritized promising solutions identified by stakeholders



Designed sessions to provide **level setting** and **encourage dialogue**



Engaged in **cross-agency partnerships** to make services better for families



Tested short-term **programming and data collection** approaches to inform policy

Priority Areas

**Licensing
Requirements and
Enforcement**

Access and Rates

**Workforce, Technical
Assistance, and
Training**

**Communication,
Information, and
Collaboration**

OEC is addressing pain points related to Access and Rates and Communication, Information, and Collaboration

Access and Rates

- Lack of affordable infant and toddler care in CT
- State funding for preschool is disjointed
- Some families (e.g., children with special needs, behavioral health, teen parents, shift workers, etc.) are not getting the support they need

Communication, Information, and Collaboration

- Family voice has not been sufficiently driving decisions
- Need for continuous feedback loops between OEC and providers, advocates, and other stakeholders

Access and Rates

Long-Term Vision: Balance investments between infant and toddler and preschool care to build foundation for 0-5 early care and education system

1

Increased Care 4 Kids reimbursement rates (CCDF Child Care Subsidy Program)



- Rate increases for infant and toddler slots in center-based settings
- Family child care rates increased to incentivize and support providers to build capacity
- Built predictive models to assess impact of rate increases on applications, caseloads, and waitlists
 - Intentional about waitlist for providers and families
- Solicited feedback from local and national early care and education stakeholders related to rates and impact on access
 - Supported policy decision to prioritize infant and toddler rate increase

Access and Rates

Long-Term Vision: Balance investments between infant and toddler and preschool care to build foundation for 0-5 early care and education system

2 Launched Staffed Family Child Care Networks grants as a strategy to address need for infant and toddler care capacity, and access for families who lack transportation

- 7 grantees piloting flexible, non-prescriptive network models responsive to local community needs
 - Collecting data to learn the value of specific network supports and interventions - to inform decisions about investments that help stabilize fiscal operations, raise/maintain quality, and reduce provider turnover



Communication, Information, and Collaboration

Long-Term Vision: Build infrastructure for transparent communications that lead to collaborative direction setting between agency divisions, as well as external stakeholders

3 Partner with other agencies to support CT children and families

- Example: Governor Lamont's Initiative on Preventing Homelessness (*Launched July 2019*)
 - Improve outcomes and conserve resources by coordinating and prioritizing services for households facing homelessness who use the most social service supports across state agencies
 - Match data from Homeless Management Information System, Department of Children and Families, Department of Social Services, Department of Mental Health and Addiction, and Department of Correction to identify households



Office of Early Childhood's Next Steps

- ✓ Continue to focus on **expanding access for infants and toddler** through scaling of family child care networks
- ✓ Implement **quality improvement system** that works across care types and communicates with families about quality
- ✓ Continue to collaborate with Dept. of Children and Families to **support children with behavioral health challenges** and their families and providers
- ✓ Establish **Parent Cabinet** to have a regular feedback from families

Agenda

Welcome and Opening Remarks

Connecticut Office of Early Childhood and Third Sector

Washington Department of Children, Youth, and Families and BUILD

Washington Dept. of Children, Youth, and Families and BUILD: *Advancing an Integrated, Equitable, and Responsive Early Learning System*



Kelli Bohanon
*Director of Early Learning Programs
Washington DCYF*



Susan Hibbard
*Executive Director
BUILD Initiative*

PDG B-5

- State-focused
- Strengthen what exists
- Intended Beneficiaries: young children and their families who are low-income and/or far from opportunity
- Assess needs
- Align & coordinate services
- Strengthen collaboration
- Share best practices
- Create efficiencies
- Improve quality
- Extend parent knowledge and participation

www.buildinitiative.org



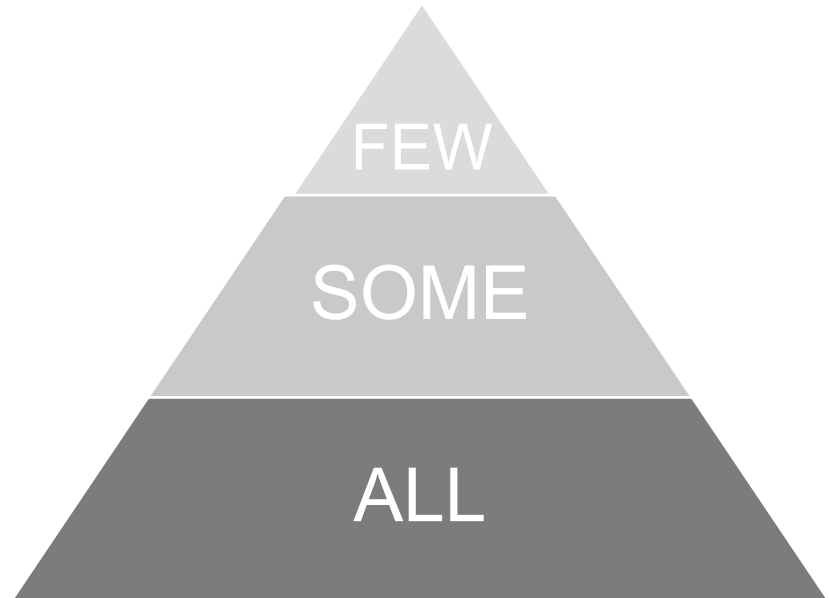
Washington's Approach

Washington made great strides with the Early Learning Challenge. State leaders turned PDG B-5 into an opportunity to:

- Use data more effectively at the systems level
- Strengthen partnerships with Tribal Communities
- Focus on the needs of DLLs
- Increase supply of infant and toddler care
- Create more inclusive classrooms
- Enhance provider capacity to support EC mental health (mental health consultants, trauma-informed supports)
- Improve systemic coordination of IECMH
- Focus on ECE providers as businesses

Foundations and Key Characteristics of WA's System

- Prenatal through 3rd grade
- Mixed delivery
- Equity
- Prevention
- High quality
- Whole child, whole family
- Community



Core B-5 PDG Application Tenets:

- ✓ 90% school readiness
- ✓ Racial equity
- ✓ Recognize WA tribes as sovereign nations
- ✓ Ensuring access and high quality across formal and informal care settings
- ✓ Focus on highest risk children and families
 - ✓ Parent choice and involvement
 - ✓ Caregiver and Provider Supports
 - ✓ Strengthen transitions Birth to K
 - ✓ Prevent and mitigate trauma
 - ✓ Build community capacity
- ✓ Focus on rural and isolated communities

**Activity #3: Families
Family Supports and
Statewide
Coordination and
Referral System**

- ✓ Help Me Grow
- ✓ Specialized Pathways (child welfare and TANF)
- ✓ Mobility Mentoring

**Activity #4: Providers
Community-Based
Supports**

- ✓ Shared Services planning and training (business and comp services)
- ✓ Early Childhood Mental Health Consultation and Trauma-Informed Practices
- ✓ WaKIDS: Strengthen K Transitions
- ✓ Strengthen Inclusion Practices

**Activity #5:
Implementation**

- ✓ Early ECEAP (readiness activities and pilot design)
- ✓ Shared Services Comp Services Pilot
- ✓ Shared Services Business Coaching Pilot
- ✓ Inclusion: Inclusive Preschool Classroom Pilots

Activity #2: Washington State Early Learning Plan 2.0
(include specific planning for Early ECEAP, ECLIPSE)

Activity #1: Needs Assessment

Building system and caregiver/provider capacity to be responsive to the unique needs and cultural preferences of the children and families in our state.



WASHINGTON STATE
Department of
Children, Youth, and Families

www.dcyf.wa.gov

*“Experience has a structure.
Change the structure and you change the
experience.”*

-Steve Zuieback



Advancing Equity in the System

- Recognition of inequity in many forms
- Commitment to interrupt patterns of inequity
- Conscious and intentional design (processes, practices, policies)
- Individual and collective learning, commitment building
- Opportunity to create an environment of co-creation



Building a Responsive System

- Significant focus on building adult capacity/capabilities
- Creation of a trauma-informed/healing-centered system
- Strengthening partnerships and coordination in new ways
- Ensuring providers have access to critical tools and supports
- Creating mechanisms that support sustainability
- Addressing key service gaps



Agenda

Welcome and Opening Remarks

Connecticut Office of Early Childhood and Third Sector

Washington Department of Children, Youth, and Families and BUILD

New York State and The Ounce

New York State and The Ounce of Prevention Fund – *“Including ALL Parts of the Early Childhood System”*



Jenn O'Connor
*Director of Policy & Advocacy
Prevent Child Abuse New York*

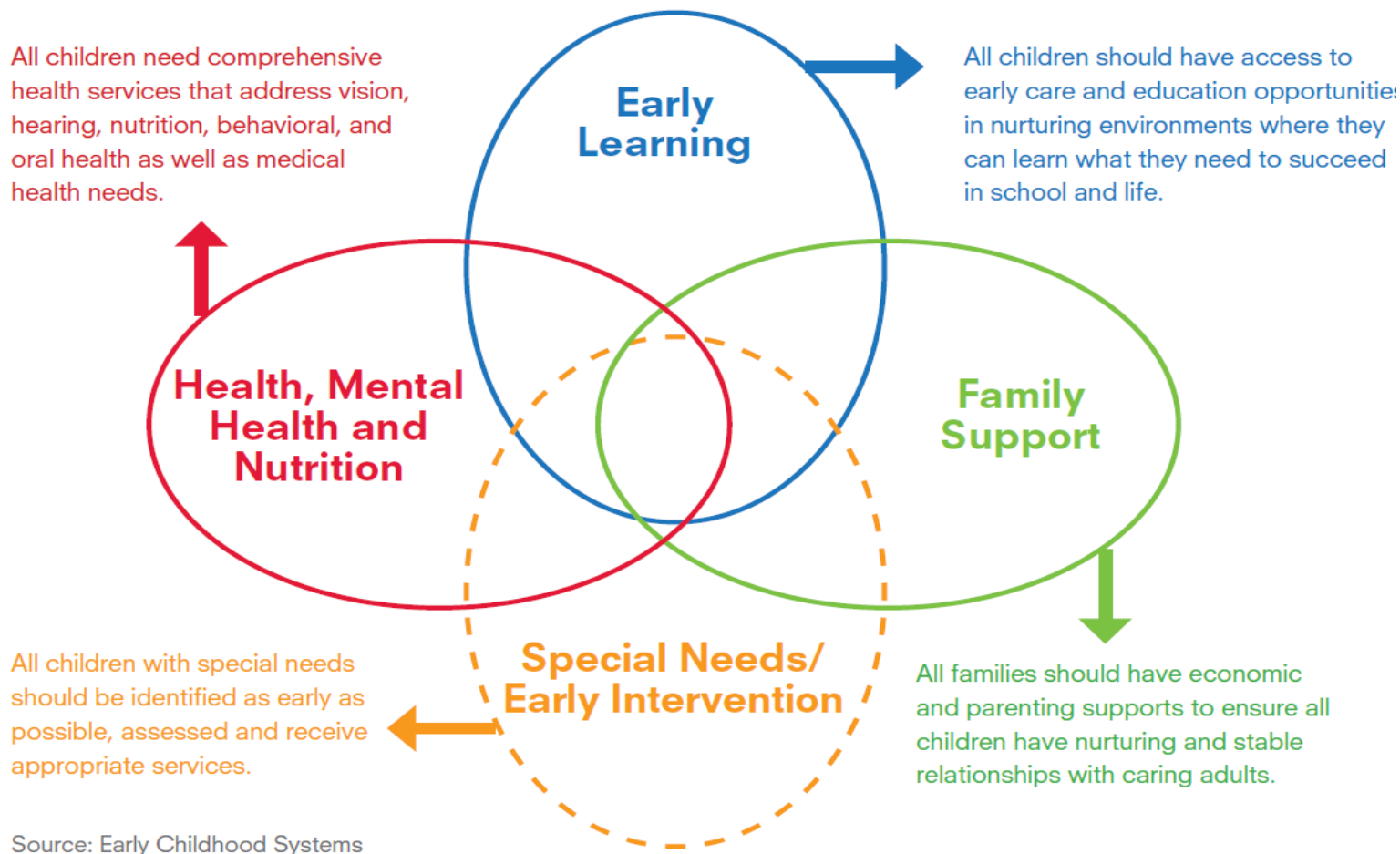


Kristin Bernhard
*Senior Vice President, Advocacy & Policy
Ounce of Prevention Fund*



Home Visiting: An Integral Part of the Early Childhood System

State Early Childhood Development System

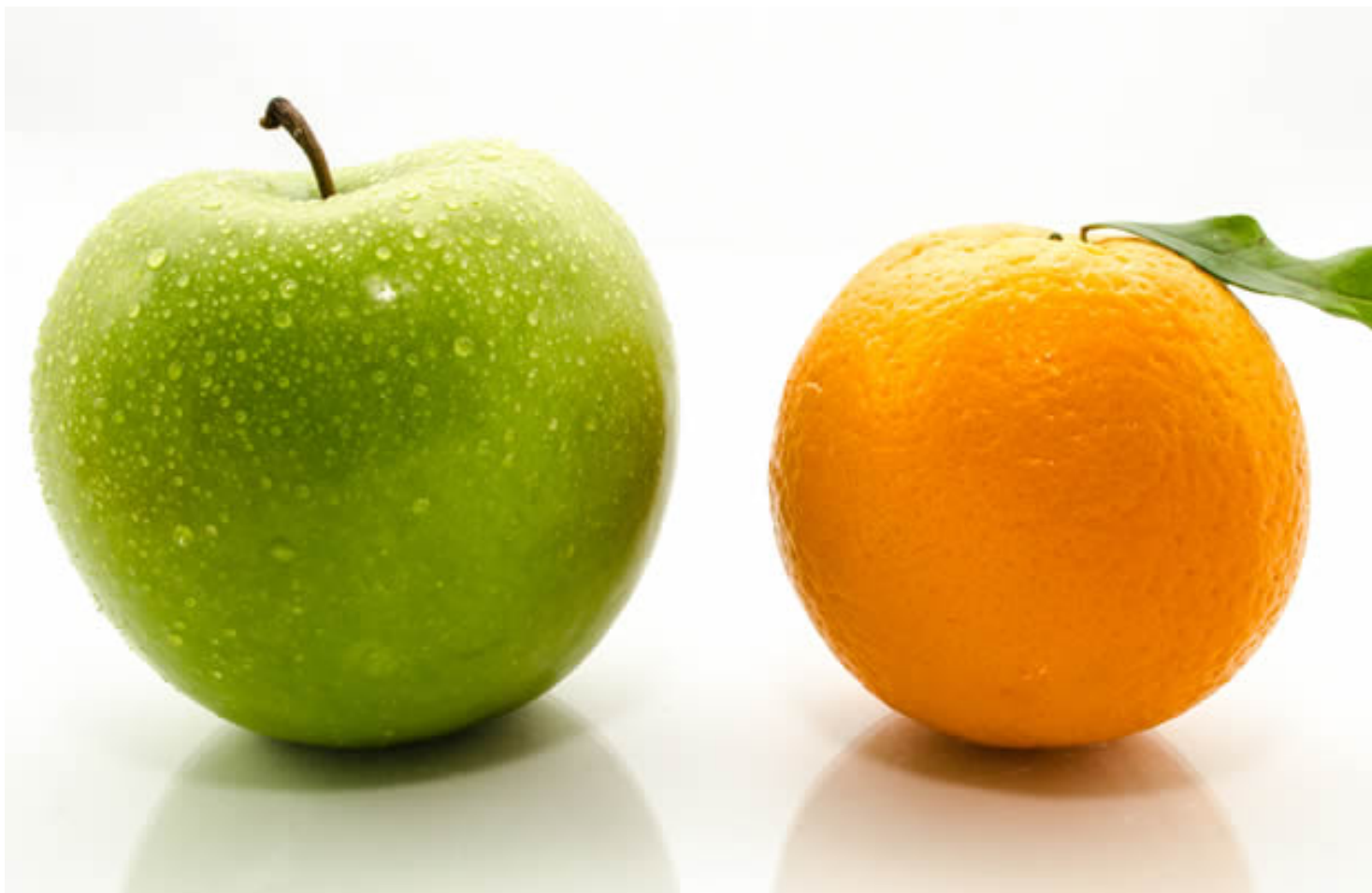


Source: Early Childhood Systems Working Group. 2006.



Including Home Visiting in PDG B5

Understanding the Barriers & Benefits



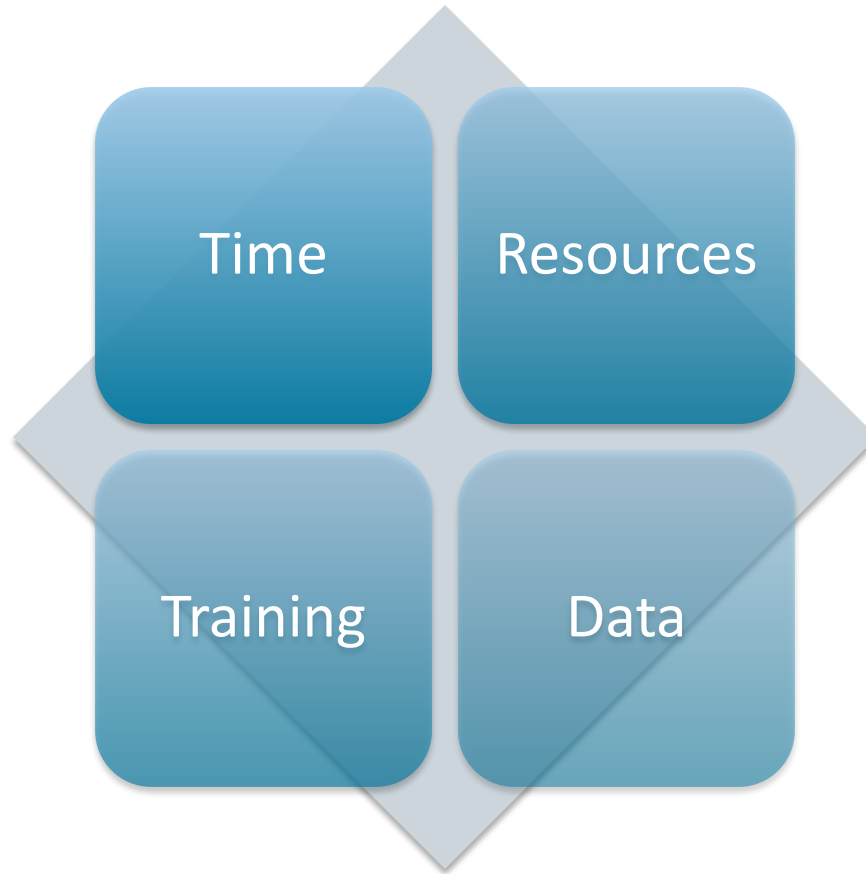
Including Home Visiting in PDG B5: New York

Getting the Team Together



Including Home Visiting in PDG B5: New York

Developing a Successful Collaborative



Including Home Visiting in PDG B5: New York

Developing Shared Goals

“The New York Home Visiting Leadership Group is comprised of partners across state agencies that **support, fund, deliver, and oversee** home visiting. We are committed to identifying and recommending policy and program solutions that help achieve **our shared vision for a collaborative, seamless, and universal home visiting system.**”

Including Home Visiting in PDG B5: New York

Sharing Lessons Learned



Agenda

Welcome and Opening Remarks

Connecticut Office of Early Childhood and Third Sector

Washington Department of Children, Youth, and Families and BUILD

New York State and The Ounce

Q&A

Takeaways from the PDG B-5 Work

Change Strategies across States:

- Consolidated efforts to bring together early learning agencies within states – Offices of Early Learning and Interagency Councils that reflects recognition of mixed delivery approach
- Braiding/Blending/Layering of funds with states to support children and families
- Re-igniting and utilizing Early Learning Councils to strengthen stakeholder involvement
- Strategic coordination of professional development
- Recognizing alternative intervention as solutions – Trauma Care, Pyramid Behavioral Intervention

Q&A

Agenda

Welcome and Opening Remarks

Connecticut Office of Early Childhood and Third Sector

Washington Department of Children, Youth, and Families and BUILD

New York State and The Ounce

Q&A

Closing Remarks

Closing Remarks



State & Territory CCDF Administrators Meeting

July 30–August 1, 2019 • Hyatt Regency Crystal City • Arlington, Virginia

Please view the live webcasts of STAM 2019, including sessions on:

- Partnering for Child Health and Well-Being
- “What’s PDG B–5 Got To Do With It?” How the CCDF Program Supports State and Territory PDG B–5 Efforts
- The Early Advantage: What We Can Learn About Early Childhood Systems from Six High-Performing Countries

and much more!

Invitations with details for viewing the webcasts are forthcoming.

Thank you for your participation! Please reach feel free to reach out with any additional questions

Christine Kang, Third Sector – ckang@thirdsectorcap.org

Susan Hibbard, BUILD Initiative – shibbard@buildinitiative.org

Kristin Bernhard, The Ounce – kbernhard@ounceofprevention.org

Appendix

Third Sector

BUILD Initiative

The Once



Our mission is to accelerate the transition to a performance-driven social sector

Third Sector is a nonprofit organization that collaborates with governments, community organizations, and funders on how to unlock public sector innovation to solve pressing challenges such as economic mobility for all and the well-being of our children.

Our proven approach is to collaborate with our clients to define impact, draw actionable insights from data, and implement outcomes orientation. When our work is complete, organizations entrusted to use public and private funds will have the systems, tools, and data to do more and do better for the people they serve.

Founded in 2011, Third Sector has worked with over 40 communities to deploy more than \$455 million of government resources towards programs and policies that measurable improve the lives of individuals served.

For more information, please visit: www.thirdsectorcap.org

BUILD Initiative

BUILD is a national effort that advances state work on behalf of young children (prenatal-five), their families, and communities.

BUILD envisions a time when all children reach their full potential. Race, place, and income are no longer predictors of outcomes.

BUILD staff partners with early childhood state leaders focused on early learning, health, mental health, and nutrition, child welfare, and family support and engagement to create the policies, infrastructure and cross-sector connections necessary for quality and equity.

For more information, please visit: <http://www.buildinitiative.org/>





Ounce of Prevention Fund

Vision: High-quality early learning opportunities from birth that prepare children for success in school and in life are an integral part of our nation's education system.

Mission: The Ounce of Prevention Fund gives children in poverty the best chance for success in school and in life by advocating for and providing the highest quality care and education from birth to age five.

For more information, please visit: www.theounce.org