

Home-Based Child Care: Leveraging Federal Funds to Support HBCC

Tuesday, October 12, 2021



Agenda



Welcome



Federal Funding
Overview



State and Community
Approaches



Next Steps



Poll

What is your role in the home-based child care sector? (As many as apply)

- HBCC Educator/Provider
- Support organization: I support providers via coaching, compliance, technical assistance, etc.
- System administrator: I work in the administration of systems that intersect with home-based child care (early learning, pre-k, early intervention, health, mental health).
- Other: Write in the Chat Box



Core Beliefs

Core Beliefs

1

Family child care and family, friend, and neighbor care settings, whether licensed or license- exempt, are part of the fabric of a mixed delivery system for early care and education.

2

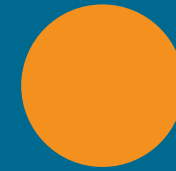
Strategies and the system components supporting home-based child care settings should be resourced on par with center- and school-based settings.

3

Strategies to work with providers in these family care settings should be responsive to their needs and intentional in their development to reflect the unique modality of care.

4

Family child care needs to be approached in a systemic way across all the various federal initiatives and private funding opportunities, in order to leverage these fully while also keeping a laser focus on best practice for FCC



Simon Workman
Prenatal to Five Fiscal
Strategies



BUILD HBCC Webinar

Simon Workman, P5 Fiscal Strategies

October 12, 2021

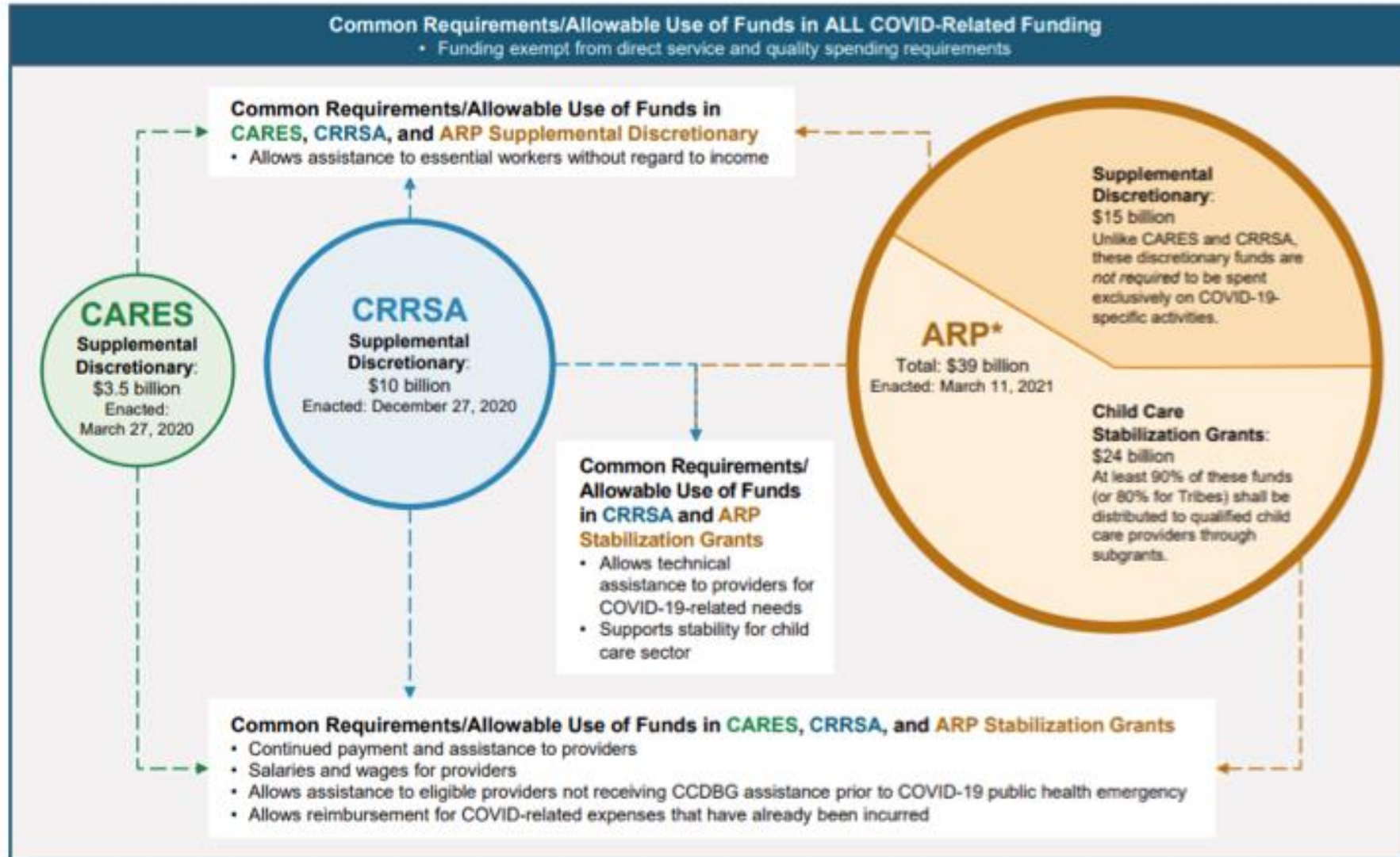


Significant new investment

- \$24 billion - Child care stabilization grants
- \$15 billion - Child Care Development Block Grant (CCDBG) supplemental
- \$1 billion to Head Start grantees
- \$150 million - MIECHV
- \$4.05 billion - Governors Emergency Education Relief Fund (GEER)
- \$54.3 billion - Elementary and Secondary School Emergency Relief (ESSER)
- \$130.6 billion - State and Local Fiscal Recovery Fund (SLFRF)

Obligation deadlines

- Stabilization grants must be obligated by Sept 30, 2022, and liquidated one year later
- CCDBG supplemental funds must be obligated by Sept 30, 2023 and liquidated one year later.



Stabilization Grants

- States must spend 90% as subgrants to providers
- Available to licensed, regulated, or registered under state law, who meet requirements of CCDBG, open or temporarily closed due to COVID, financial hardship, as of March 11, 2021
- Subgrant amounts based on current operating expenses, intended to support operations over life of subgrant

CCDBG Supplemental Funds

- Exempt from CCDF spending requirements related to quality activities and direct services.
- Can be used for any allowable use of CCDF funds, not limited to expenses related to COVID-19.
- Strongly recommend funds used to strengthen child care system and ensure families have equal access to quality, affordable child care during and after the pandemic.

- Increase **payment rates**, based on the cost of quality
- Improve **payment policies**, including increased use of grants and contracts and paying on enrollment not attendance
- Increase **workforce compensation**, including setting a floor at living wage, improving benefits, funding scholarships
- **Build supply** for underserved populations, including infants and toddlers, during non-traditional work hours, and in rural communities
- Support **child care for essential workers** and others in need, by waiving or reducing copays, increase eligibility thresholds.
- Investing in **data systems** data systems
- Increased **outreach** to providers and families
- Investing in **mental health supports** for providers and children

Seize the opportunity!

Short term:

- Compensation for home-based child care providers can be built into cost modeling for grant setting
- Opportunity to invest in HBCC as key source of supply for infants and toddlers, families in rural areas, and for child care outside of the traditional 9-5 workday
- Connect HBCC's to broader early childhood system in states, through inclusive data systems, expansion of networks to access shared supports

Long-term

- Opportunity for significant change to how child care has been funded, requiring new way of thinking about system
- For systems change to be successful, sustainable, and equitable requires intentional stakeholder engagement.





Lanette Dumas
NAFCC

Guiding Principles for Engaging FCC

Value	FCCP as leaders
Value	FCCP as people
Value	FCCP as educators
Value	FCCP as entrepreneurs
Value	FCCP as business owner
Value	FCCP and share power



Sept 2nd: a letter to Congress

Signed by 150 organizations

- Ensuring that family child care is part of the mixed delivery system for both child care and preK to deliver child care, aftercare, Head Start, Early Head Start, and preK services.
- Ensuring that payments are based on true operating costs for high-quality care, to allow for fair pay and benefits for all child care providers, including self-employed child care providers, that encompasses paid leave and health care.
- Capping costs and guaranteeing access so that no family under 150 percent of state median income pays more than 7% of their income on child care and families making under 75 percent of state median income pay nothing. Providers would be able to accept any eligible families, eliminating the need for state or local government-operated waiting lists.
- Investing in family child care networks, meaningful quality initiatives including Family Child Care Accreditation, and affordable, accessible training programs.
- Investing in new family child care programs.
- Providing financial incentives and technical assistance to encourage unlicensed family child care programs to become licensed.



State Examples

Connecticut and Massachusetts

- Data collection tool
- Professional Membership

Louisiana

- True cost of care
- Provider input

Texas

- Grant Dollars
- Business Coaches

Breakout



- Which funding stream are you connected to or want to know more about?
- How can we support HBCC educators to understand their expenses and to have readily available?
- How are you welcoming HBCC educators to use their authentic voice to be an influence?
- How are you facilitating FFN/unregulated care educator entrance and progressions in quality systems and supports?

Resources

Lanette Dumas (NAFCC)

nafcc@nafcc.org

Simon Workman

simonworkman@gmail.com

Contacts

Jeanna Capito

jeannacapito@gmail.com

Danielle Fuentes Johnson

dfuentesjohnson@buildinitiative.org

What's Next?

Supporting HBCC Educators Whose Primary Language is Other than English

November 16

12-1 PM ET



Before we go.....

Poll:

This CoP meeting was useful in increasing my knowledge on the topic:

- Strongly disagree
- Disagree
- Neither agree or disagree
- Agree
- Strongly Agree

Chat Box:

What struck you as significant, new or interesting during this webinar?

