



Envisioning Our Ideals

A Holistic Approach to Quality in ECE

Toscha Blalock, Trust for Learning
Liz Bruno, Brady Education Foundation
Fabienne Doucet, New York University
Host: Debi Mathias, BUILD Initiative
Moderator: Ellen Roche, Trust for Learning

25 March, 2022



What does an ideal learning environment look like to you?

(Please share briefly in the chat!)

As we go:

Please share your **questions** in the **Q&A**

Please share your **comments** in the **chat**.

Trust for Learning works to expand **ideal learning environments** for **all children birth-8** in **publicly-funded settings**.

We particularly focus on expansion to underserved communities including **children of color, children experiencing poverty, multilingual children and children with disabilities**.



What are ideal learning environments for young children?

The nine principles of ideal learning environments are based on several foundational ideas:

- children are born actively learning
- human development is lifelong
- human beings develop holistically
- all children have a right to early learning environments that support their unique potential

The **teacher is a guide**, nurturing presence, and co-constructor of knowledge

Instruction is

personalized to acknowledge each child's unique development

Play is an essential element of young children's learning

Children construct knowledge from diverse experiences to make meaning of the world.

Decision-making reflects a commitment to **equity**



Young children and adults learn through **relationships**

The **environment** is intentionally designed to facilitate children's independence, exploration, and interaction

Continuous learning environments support **adult development**

The time of **childhood is valued**

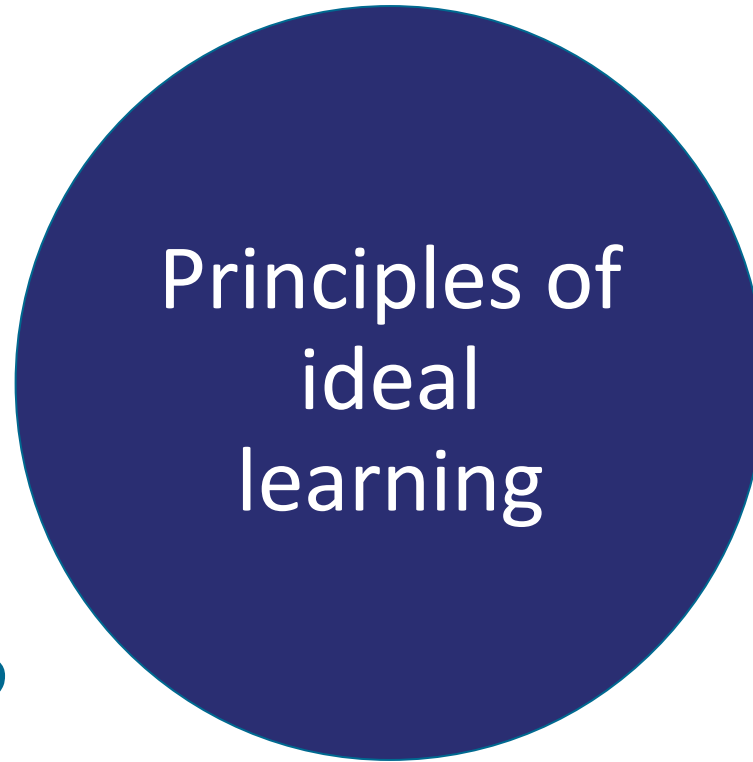
The **teacher is a guide**, nurturing presence, and co-creator of knowledge

Instruction is **personalized** to acknowledge each child's unique development

Play is an essential element of young children's learning

Children construct knowledge from diverse experiences to make meaning of the world.

Decision-making reflects a commitment to **equity**

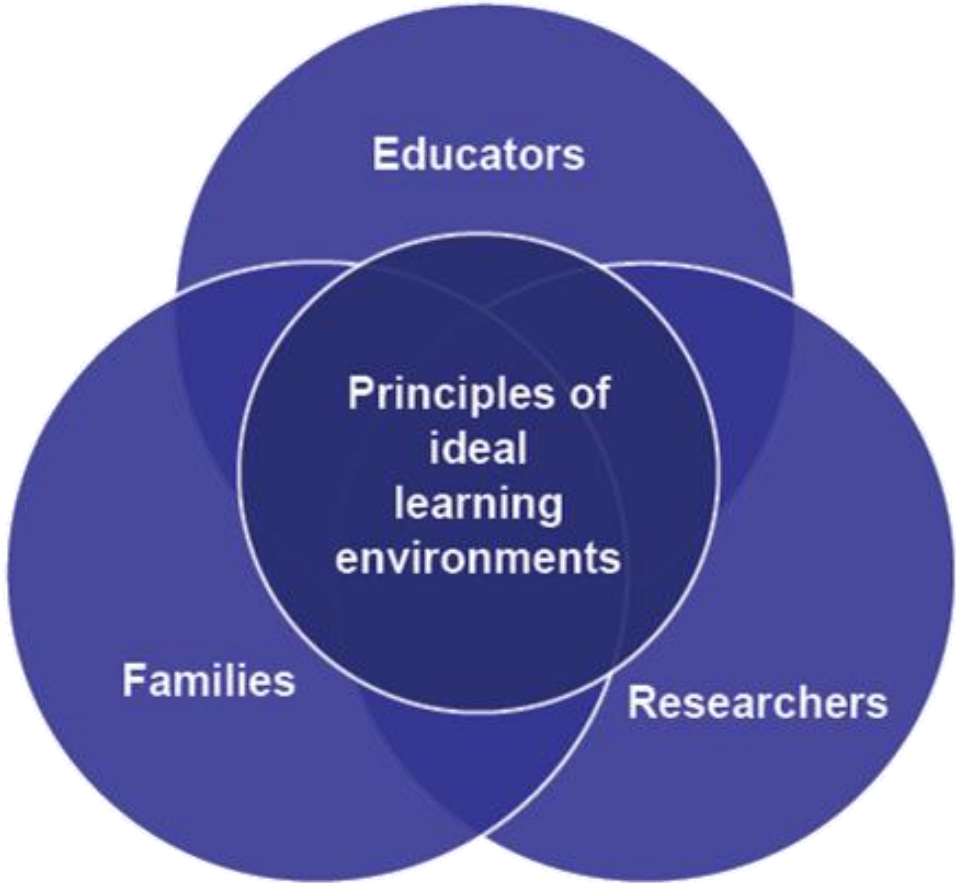


Young children and adults learn through **relationships**

The **environment** is intentionally designed to facilitate children's independence, exploration, and interaction

Continuous learning environments support **adult development**

The time of **childhood is valued**





Montessori

Waldorf

High Scope

Tools of the Mind

All Our Kin

Reggio Emilia

**Ideal
Learning
Roundtable**

Bank Street

Friends Center

AVANCE

Educare

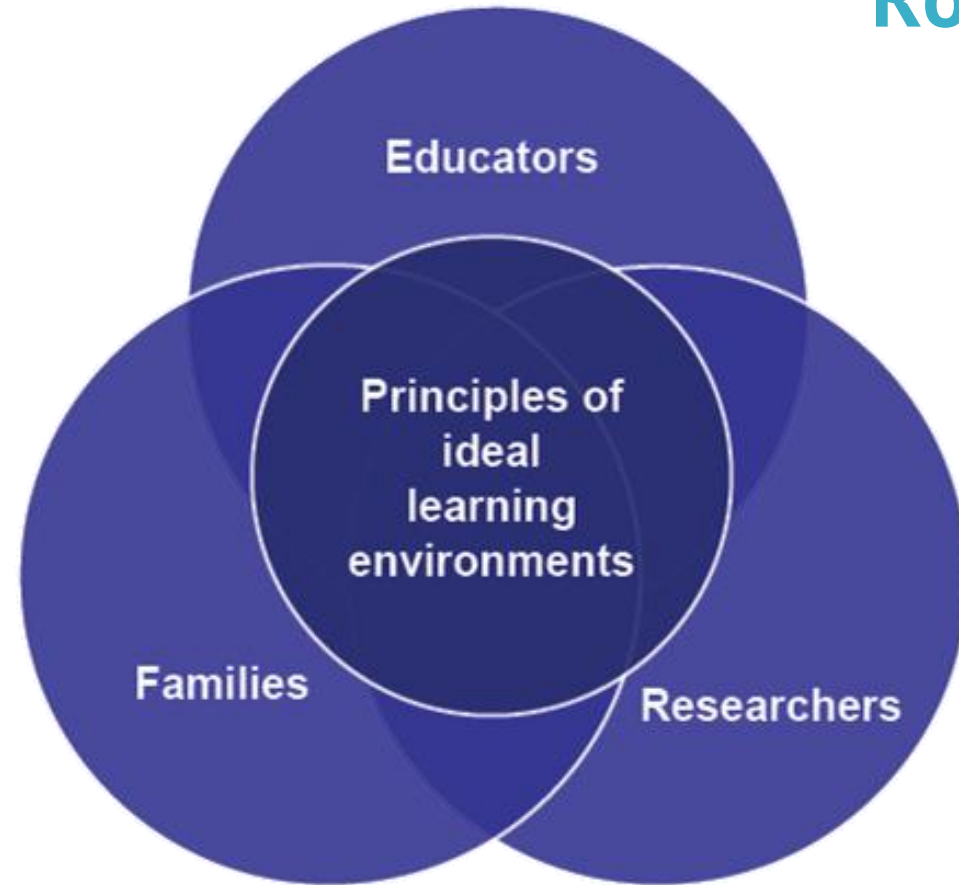
EL Education

**Children's
Equity Project**

NH ChILD

**Buffett Early
Childhood Institute**

Ideal Learning Roundtable



2017 Parent Research

2022 Evidence Brief

What does an ideal learning environment look like to you?

Please share your own vision briefly in the chat!

Toscha Blalock
Trust for Learning



Liz Bruno
**Brady Education
Foundation**



Fabienne Doucet
NYU Metro Center



Debi Mathias
BUILD Initiative



Ellen Roche
Trust for Learning





Highlighted Resources

- **Evidence Brief:**
<https://trustforlearning.org/evidence-brief/>
- **NYU Metro Center:**
<https://steinhardt.nyu.edu/metrocenter>
- **Building Equitable Early Childhood Systems:**
<https://buildinitiative.org/approach/equitable-early-childhood-systems/>
- **Hechinger Op-Ed - Why we Need a Proactively Antiracist Scientific Method:**
<https://hechingerreport.org/opinion-why-we-need-a-proactively-anti-racist-scientific-method/>

www.buildinitiative.org



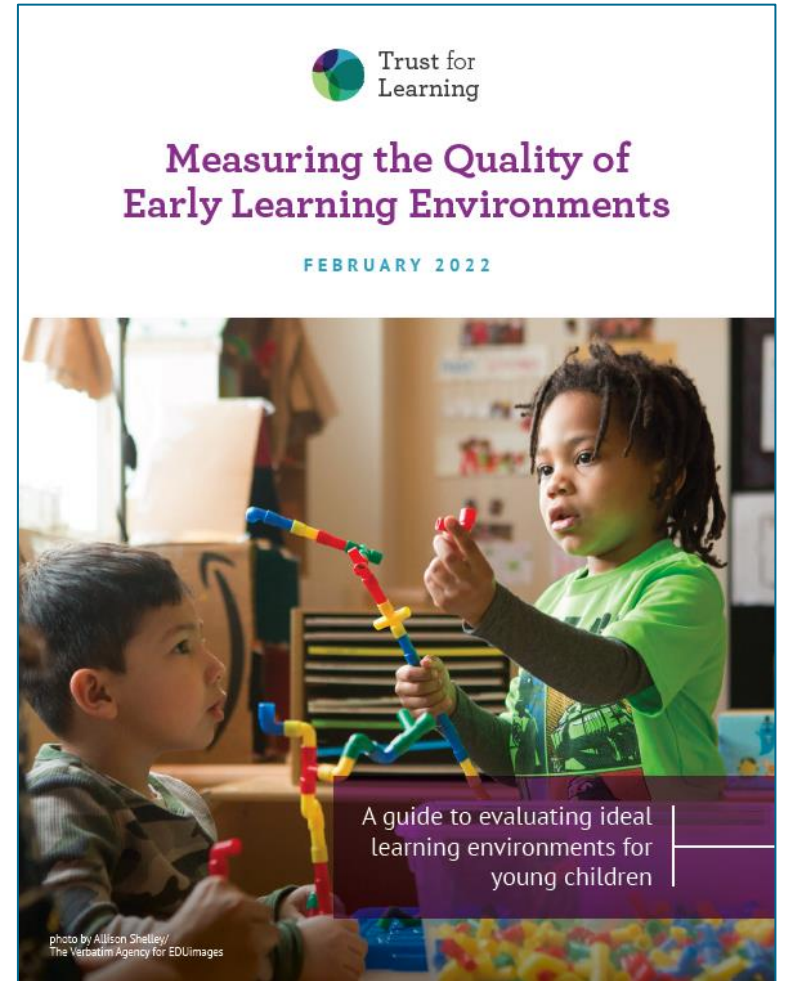
Join us next Tuesday for Part 2!

*Measuring Up to Our Ideals - A New Vision
for Equitable Quality Measurement*

Thursday, March 31
1:00 - 2:15 PM ET

**Please complete the evaluation that will
appear in your browser once we close.**

www.buildinitiative.org



Thank you!

Debi Mathias

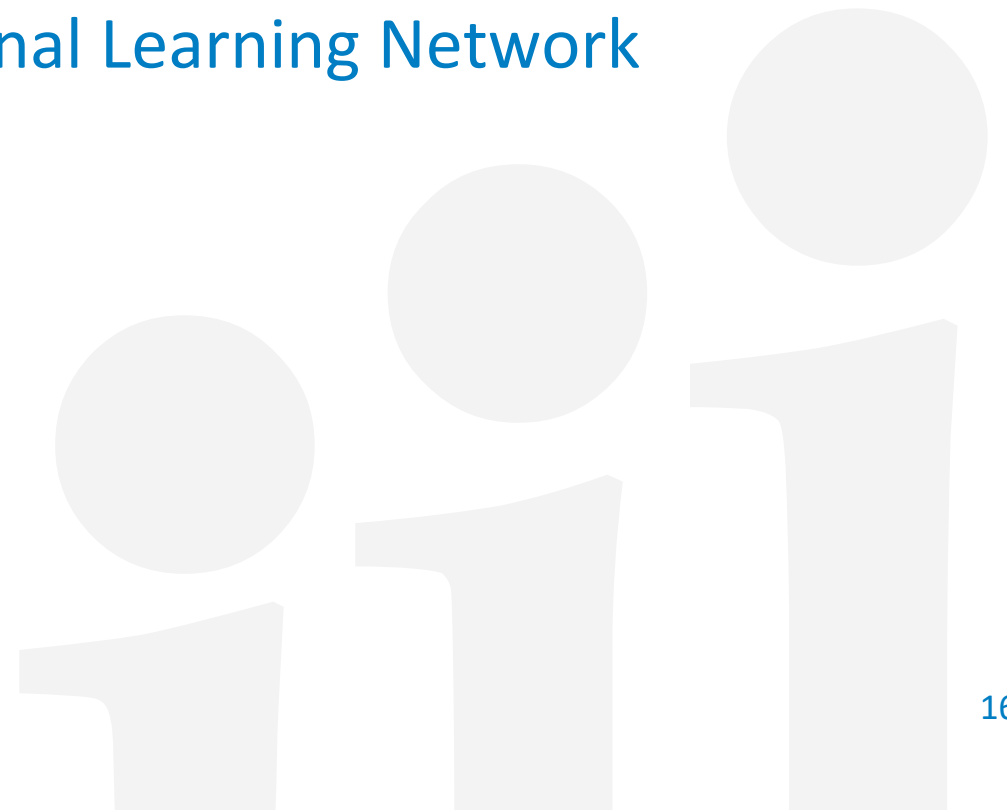
Director

ECE Quality Improvement National Learning Network

BUILD Initiative

dmathias@buildinitiative.org

www.buildinitiative.org



Resources Shared in Chat during Webinar

- **“Ideal Learning in Principle and Practice”**
<https://trustforlearning.org/resource/ideal-learning-in-principle-and-practice/>
- **“Addressing the Suspensions of Black Children throughout Early Childhood Education”**
<https://www.youtube.com/watch?v=gXW3DcwiXDI>
- **“Culturally Responsive Curriculum Scorecards”**
<https://steinhardt.nyu.edu/metrocenter/ejroc/culturally-responsive-curriculum-scorecards>
- **“Pathways for Educator Development”**
<https://trustforlearning.org/resource/pathways-for-educator-development/>