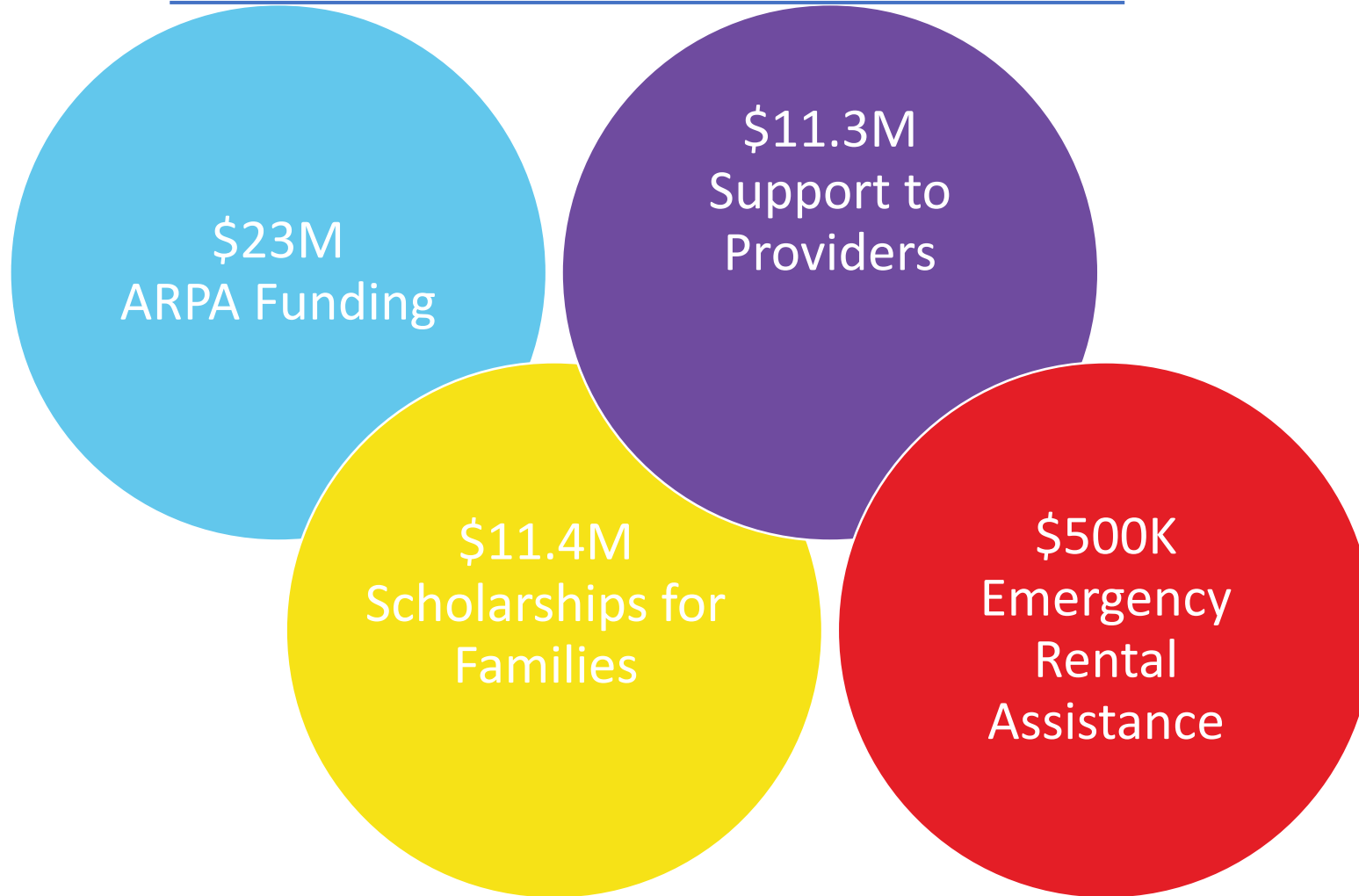




Franklin County
**BOARD OF
COMMISSIONERS**



Franklin County RISE supports Early Childhood Education



Franklin County
**BOARD OF
COMMISSIONERS**
Service. Progress. Excellence.

RISE Scholarships

Scholarships for families facing the Benefits Cliff*

(*Too much income to qualify for other support, but not enough to pay for child care)



Families receive up to \$10,000 per year



Have a child under 5 at the time of application



Have an income between 142% to 300% of the Federal Poverty Level

RISE Teacher Supports

Funds to help support early childhood educators struggling with housing costs



Educators would receive an average payment of \$3,000 to help meet housing costs

RISE Provider Incentives

Incentives to help strengthen licensed child care centers and family child care (FCC) homes



Publicly Funded Child Care Incentives

- Licensed providers that enter into new PFCC agreements with ODJFS will receive \$1,000 award
- Licensed providers who maintain PFCC agreements and enroll children through the program are eligible for up to \$2,000 in incentives annually



Step Up To Quality Incentives

- Centers & licensed FCC homes can receive awards of \$2,500 and \$1,000 for earning a star-rating
- Programs that become highly rated (3-5 stars) can receive awards of \$10,000 (Center) or \$5,000 (FCC)

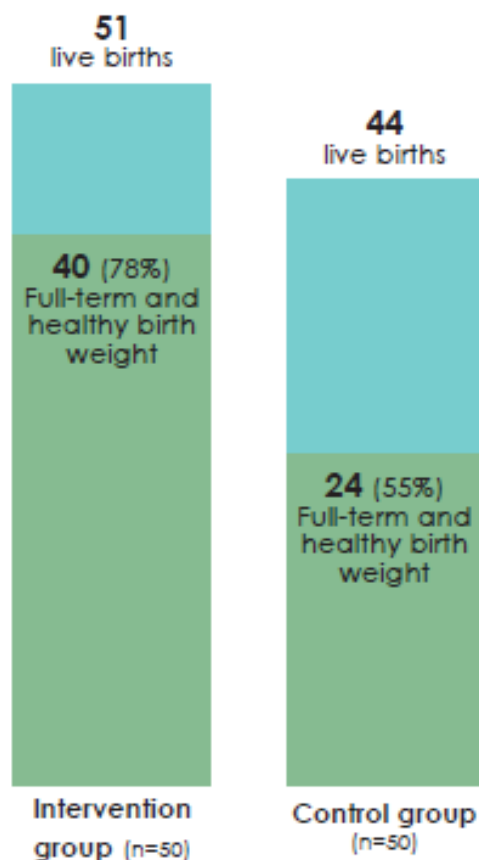


Non-traditional Care Incentives

- Centers & licensed FCC homes who enroll children during non-traditional hours* are eligible for up to \$5,000 incentives annually
- (*6 p.m. – 6 a.m. on weekdays and/or weekends)

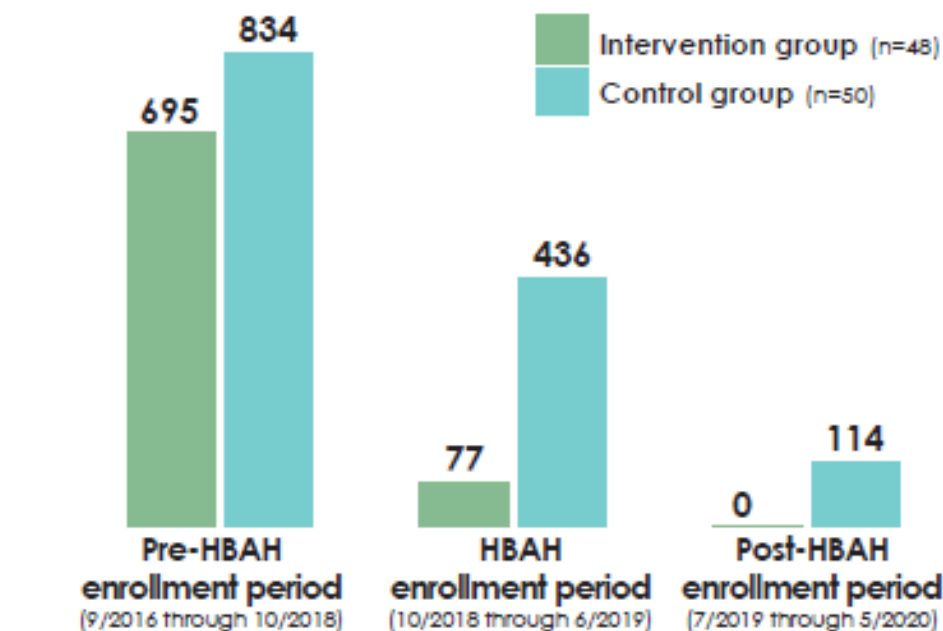
Healthy Beginnings at Home: Housing as Healthcare

Figure ES 3. Birth outcomes for HBAH intervention and control group participants



Source: Nationwide Children's Hospital analysis of CareSource and self-reported data

Figure ES 4. Homeless shelter use by HBAH intervention and control group households: Total household-days in shelter



Source: Homeless Management Information System, collected by Columbus Community Shelter Board, analysis by University of Delaware



Franklin County

**BOARD OF
COMMISSIONERS**

Service. Progress. Excellence.

Columbus Scholar House for Student Parents

Housing

Community Properties of
Ohio, Columbus
Metropolitan Housing
Authority, Ohio Capital
Corporation for Housing,
Affordable Housing Trust
of Columbus and Franklin
County

Education

Columbus
State
Community
College
The Ohio State
University

Childcare

YWCA of
Central Ohio



Franklin County

**BOARD OF
COMMISSIONERS**

Service. Progress. Excellence.

