

Home-Based Child Care: Embedding Wellness in HBCC Systems through Strengthening HBCC Networks:

An Evidence-Based Framework for High
Quality (Benchmarks)

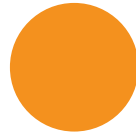
September 19, 2023



Agenda



Welcome



Supporting HBCC
Educators through
Network Benchmarks
and Indicators



Network Benchmarks
and Indicators: Why
and What



Next Steps





Core Beliefs

Core Beliefs

1

Family child care (FCC) and family, friend, and neighbor (FFN) care settings, whether licensed or license- exempt, are part of the fabric of a mixed delivery system for early care and education.

2

Strategies and the system components supporting home-based child care(HBCC) settings should be resourced on par with center- and school-based settings.

3

Strategies to work with providers in these family child care settings should be responsive to their needs and intentional in their development to reflect the unique modality of care.

4

Family child care needs to be approached in a systemic way across all the various federal initiatives and private funding opportunities, in order to leverage these fully while also keeping a laser focus on best practice for FCC

Defining the terms:

Home-Based Child Care:

Is inclusive of wherever children are cared for in a home setting. Different states and communities refer to this in different ways:

- Family Child Care (FCC)
- Family, Friend, and Neighbor Care (FFN)
- Licensed, Unlicensed
- Registered, Unregistered
- Etc....

Who do we mean?

- Provider
- Educator
- Owner/Operator
- Practitioner
- Etc.....

Your favorite wellness activity:

Place in the chat your favorite wellness activity





Home-Based Child Care Network Benchmarks and Indicators

September 19, 2023





Home Grown

Home Grown is a national collaborative of funders dedicated to improving the quality of and access to home-based child care (HBCC)

- Inclusive of Family Child Care (FCC) providers and Family, Friend, and Neighbor (FFN) caregivers



Background: Comprehensive Networks

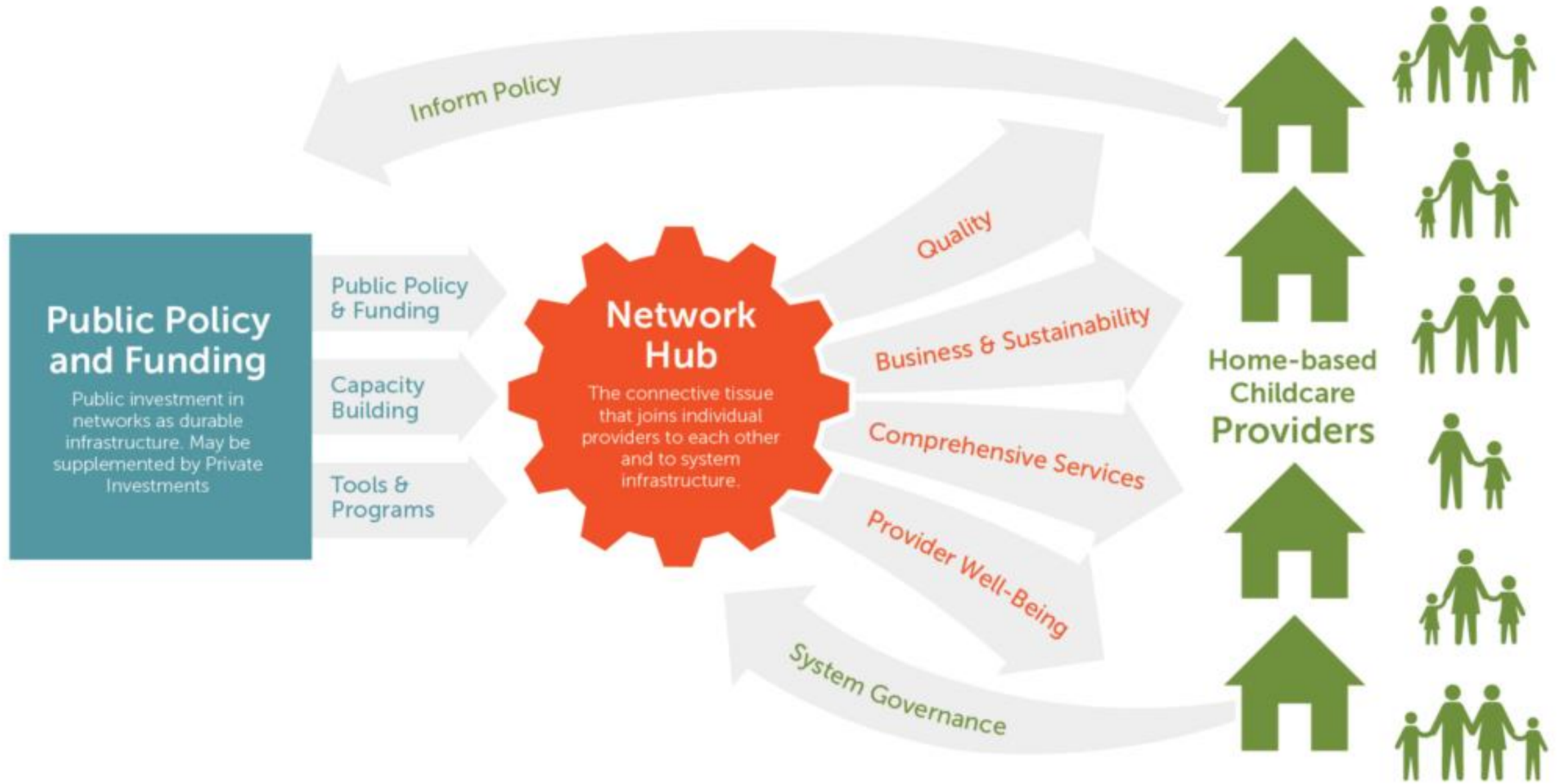




Why Focus on Networks?

- Currently networks take many forms and provide a wide variety of services.
- During the pandemic there was increased demand for home-based care but limited support for caregivers and providers
 - Financial hardship
 - Lack of distinct, timely information specific to HBCC
 - Limited access to federal benefits and many EC system supports
- Need for comprehensive network strategy

Comprehensive Network Strategy



Building Comprehensive Networks Initiative



Resources for Building Comprehensive Networks

The COVID-19 pandemic illuminated the need for child care as infrastructure. As families juggled work, job loss, and distance learning, all while taking care of children, we've seen something grow in America: the reliance on, respect for, and recognition of home-based child care (HBCC). Yet HBCC remains woefully under-resourced.

Now as federal relief dollars begin to flow to the states and additional legislation is on the horizon, our country has the resources to build lasting infrastructure in the form of **comprehensive networks** to support HBCC providers and the families they serve.

- Home Grown provides support to two cohorts of state and local partners working to build Comprehensive Network Strategy
- Reinforced the need to articulate a clear vision of the services, practices, and supports of a high quality comprehensive network.

Network Benchmarks and Indicators



Purpose of the Benchmarks

Articulate high-quality and equitable network service delivery, practices, and supports for HBCC providers.

Development of Benchmarks

- **Review of selected literature**

- Limited direct evidence from studies of networks
- Literature reviews of HBCC support initiatives

- **Stakeholder input**

- Two focus groups with providers who participate in networks
- One focus group with network staff/directors
- Home grown reviews (including from BCN navigators)
- Additional stakeholder review
 - Equity-focused review
 - National organizations

Benchmarks Overview

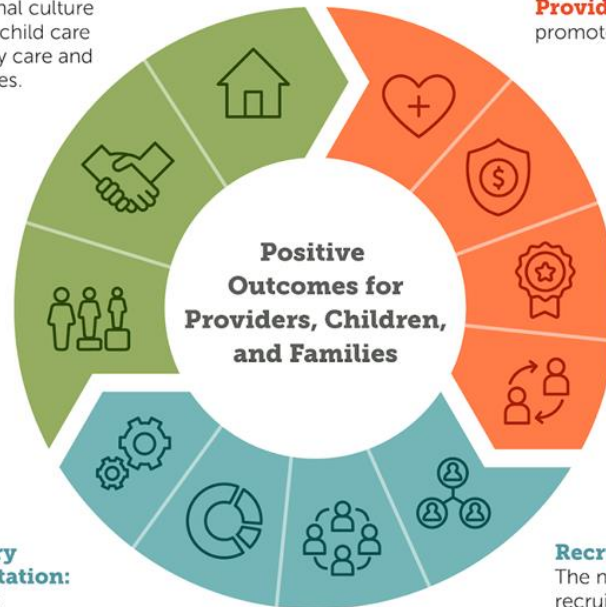
Network Benchmarks

Why

Focus on HBCC: The network's organizational culture includes an intentional focus on home-based child care (HBCC) as a distinct, essential, and valued early care and education (ECE) setting for children and families.

Providers as Partners: The network includes providers as equal partners in network governance, decision-making, operations, and accountability.

Focus on Equity: The network demonstrates an intentional focus on equity and culturally grounded service delivery.



Service Delivery and Implementation:

The network uses research evidence to inform how services are implemented including a focus on relationship to service delivery.

Data Collection:

The network uses an intentional and collaborative approach to data collection and analysis that informs service delivery.

Staffing:

The network uses intentional staffing strategies to support providers.

Recruitment:

The network uses recruitment strategies that result in ongoing provider participation.

What

Provider Well-Being: The network offers services that promote provider well-being and attachment to HBCC work.

Finances & Sustainability: The network offers services that promote economic well-being and sustainability.

Quality Practices: The network offers services that build on and enhance culturally-relevant and community-embedded provider practices that contribute to positive child and family outcomes.

Comprehensive Services: The network offers holistic services for children and families beyond the supports offered for providers.

How

Benchmarks:

Broad principle of network quality

Indicators:

Specific features, practices, approaches that work together to achieve the broad principle

Examples:

Examples of features and practices

Why

Focus on HBCC: The network's organizational culture includes an intentional focus on home-based child care (HBCC) as a distinct, essential, and valued early care and education (ECE) setting for children and families.

Providers as Partners: The network includes providers as equal partners in network governance, decision-making, operations, and accountability

Focus on Equity: The network demonstrates an intentional focus on equity and culturally grounded service delivery.

Prioritizes groups of providers, families, and children who have been historically marginalized in order to increase their equitable access to meaningful and quality resources and opportunities





“Why” Benchmarks in Action

Danielle Caldwell

Owner and Director, The Children’s Room

Consultant

- **Provides a framework that designed for HBCCs**
- **Focus on equity in ECE; Marginalized Communities**
- **Center in a provider perspective: Providers are leaders and equal partners.**
- **Opportunity for meaningful engagement by persons closest to the issues.**

What

Provider Well-Being: The network offers services that promote provider well-being and attachment to HBCC work.

Finances & Sustainability: The network offers services that promote economic well-being and sustainability.

Quality Practices: The network offers services that build on and enhance culturally-relevant and community-embedded provider practices that contribute to positive child and family outcomes.

Comprehensive Services: The network offers holistic services for children and families beyond the supports offered for providers.

Refers children as needed to developmental, health and nutrition, mental health screening and assessments, and mental health consultation



“What” Benchmarks in Action

Ansley Harron

Family Support Lead

Smart Start of Transylvania County

What:

- **Provider Well-Being**
 - Monthly meeting to support each other while covering areas of their daily struggles
- **Finances & Stability**
 - Income and nutrition supplements
 - Access to budgeting tools around their daily operation
- **Quality Practice**
 - Monthly activity roadmap
- **Comprehensive Services**
 - Making healthy resources fully accessible for all families





Comprehensive
offers holistic s
beyond the sup

Service Delivery and Implementation:

The network uses research evidence to inform how services are implemented including a focus on relationship to service delivery.

Data Collection:

The network uses an intentional and collaborative approach to data collection and analysis that informs service delivery.

Staffing:

The network uses intentional staffing strategies to support providers.

Recruitment:

The network uses recruitment strategies that result in ongoing provider participation.

Collaborates with trusted community partners such as schools, Head Start Programs, FCC associations, and faith-based organizations to reach out to HBCC providers

How



“How” Benchmarks in Action: Examples

- **Service Delivery:**
 - H.4. Logistical realities: schedule meetings and make resources available for providers at times and places that are accessible to them
- **Data Collection:**
 - I.1 Creating a theory of change
 - I.2 Collecting meaningful data driven by provider voice
- **Staffing:**
 - J.2. Hiring staff that reflect the cultural and linguistic backgrounds of providers: practice language justice by hiring Spanish speaking staff to support Spanish speaking providers and offer coaching, training, materials in the language of their heart
- **Recruitment:**
 - K.2. Tailor recruitment strategies that are culturally and linguistically responsive

Using the Benchmarks



How can networks approach using the benchmarks?

- Focus on selected benchmarks that reflect current interests and capacity
- Use benchmarks and indicators as a guide for developing a theory of change logic model
- Aim to address all benchmarks and indicators

Can a network achieve all of the benchmarks?

- A Comprehensive Network Strategy should be able to achieve all of the benchmarks
- It may be more challenging for individual networks that operate outside of network hubs



With the Benchmarks:

“...networks can build a strong foundation that is measurable, sustainable, and accountable to all stakeholders. Strong networks strengthen providers. Strong providers strengthen families. Strong families strengthen their communities.”

-Chris Nelson
Owner, Mountain View Child Care

Q & A



Resources



Publications

- [Strengthening HBCC Networks: An Evidence-Based Framework for High Quality \(Benchmarks\)](#)
- [Research Brief: Identifying Practices and Features of High-Quality HBCC Networks](#)

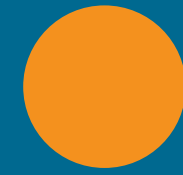
Upcoming from Home Grown and Erikson Institute:

- Networks survey results
- Focus group briefs



Thank you





In closing...

Presenters

Karen Tylek

karen@homegrownchildcare.org

Natalie Renew

natalie@homegrownchildcare.org

Danielle Caldwell

dcaldwell_77@yahoo.com

Ansley Harron

sstcearlycarecapacity@gmail.com

Contacts

Jeanna Capito

jeannacapito@gmail.com

Danielle Fuentes Johnson

dfuentesjohnson@buildinitiative.org

What's Next



- Virtual:
 - 11/13, 11-14
- In-Person (Anaheim):
 - 11/29-12/01

Before we go.....